



QUALITY PRECAST COMPANY

"STRONG" ON SERVICE
P.O. Box 11 - Brandon, Florida 33509-0011
www.qualityprecast.com
(800) 752-1730

www.qualityprecast.com

Pro-Crete Materials Corporation /
Quality Precast Co. FL 23832

Distributors for:

Commercial Concrete Products, Inc./
Quality Precast Co. FL 1774 - R6

GENERAL NOTES:

1) CODES

- 11 FLORIDA BUILDING CODE 6th EDITION, 2011 RESIDENTIAL SECTIONS R402.2 & R606.
- 12 FLORIDA BUILDING CODE, 6th EDITION, 2011 BUILDING, SECTIONS R602 & 2107.
- 13 BUILDING CODE REQUIREMENTS FOR REINFORCED CONCRETE (ACI 318-14).
- 14 BUILDING CODE REQUIREMENTS AND SPECIFICATION FOR MASONRY STRUCTURES (ACI 530-13 & ACI 530.1-13)
- 15 AMERICAN SOCIETY OF CIVIL ENGINEERS MINIMUM DESIGN LOADS FOR BUILDINGS AND OTHER STRUCTURES (ASCE 7-10).

2) CONCRETE:

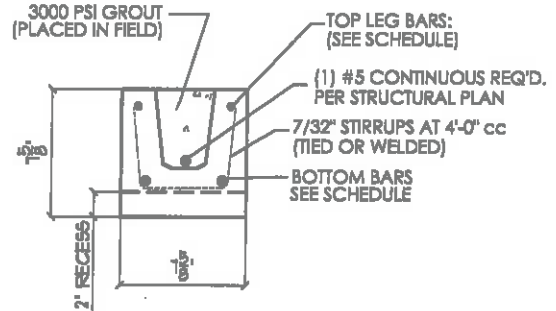
- 2.1 CONCRETE COMPRESSIVE STRENGTH AT 28 DAYS:
 - 2.1.1 PRE-CAST W/STANDARD REINFORCEMENT-4000 PSI MIN.
 - 2.1.2 PRE-CAST W/PRESTRESS REINFORCEMENT-6000 PSI
 - 2.1.3 GROUT PER ASTM C476 - 3000 PSI W/ MAX. 3/8" AGGREGATE, 8" TO 11" SLUMP.
- 2.2 REINFORCING BARS:
 - 2.2.1 STEEL PLACED IN PRECAST LINTEL AT TIME OF FABRICATION ASTM A615 (GRADE 60)
 - 2.2.2 STEEL IN LINTEL AND KNOCKOUT BLOCK (PLACED IN FIELD) ASTM A615 (GRADE 40).
- 2.3 PRESTRESS STRANDS ASTM A416 7-WIRE, STRESS RELIEVED 270 KSI
- 2.4 DETAIL REINFORCEMENT IN ACCORDANCE WITH ACI 318.
- 2.5 CONCRETING OPERATIONS SHALL COMPLY WITH ACI STANDARDS.
- 2.6 D43 WIRE PER ASTM A496

3) MASONRY:

- 3.1 CONCRETE MASONRY UNITS (CMU) SHALL CONFORM TO ASTM C-90, NORMAL WEIGHT WITH MINIMUM NET AREA COMPRESSIVE STRENGTH 2000PSI.
- 3.2 MORTAR SHALL CONFORM TO ASTM C-270 TYPE "M" OR "S"
- 3.3 FULL MORTAR JOINTS ARE REQUIRED
- 3.4 MINIMUM AGGREGATE 28-DAY COMPRESSIVE STRENGTH OF CMU AND MORTAR SHALL NOT BE LESS THAN $f_m = 2000$ PSI. MASONRY STRENGTH SHALL BE ESTABLISHED BY THE "UNIT STRENGTH METHOD" OR, ALTERNATIVELY, BY THE "PRISM TEST METHOD" WHERE URM REQUIREMENTS HAVE NOT BEEN MET.

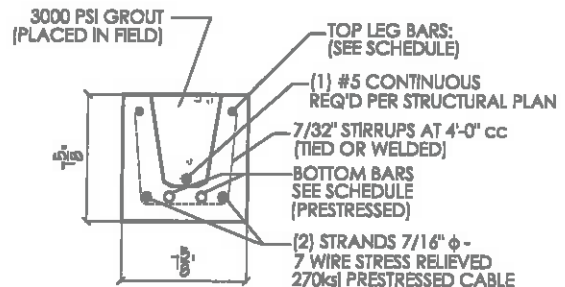
4) STRUCTURAL:

- 4.1 SAFE LOAD VALUES ARE BASED ON LITELS HAVING A BEARING OF 8" (WITH A MINIMUM ACCEPTABLE BEARING OF 4" PER FLORIDA BUILDING CODE 6TH EDITION, 2011 RESIDENTIAL, SECTION R606.3 OR FLORIDA BUILDING CODE 6TH EDITION, 2011 BUILDING, SECTION 2104).
- 4.2 SAFE LOAD VALUES BASED ON RATIONAL DESIGN ANALYSIS PER ACI 318 AND ACI 330
- 4.3 DESIGNER MAY EVALUATE CONCENTRATED LOADS FROM THE SAFE LOAD TABLES BY CALCULATING MAXIMUM RESISTING MOMENT AND SHEAR AT d DISTANCE AWAY FROM THE FACE OF THE SUPPORT.
- 4.4 FOR LINTEL LENGTH AT 6'-6" OR GREATER, VERTICAL CELL FILLED SOLID WITH GROUT AND MINIMUM ONE (1) #5 VERTICAL REBAR IS REQUIRED AT EACH END OF THE LINTEL.
- 4.5 LITELS THAT ARE GREATER THAN 14'-0" CLEAR SPAN MUST BE PROVIDED TEMPORARY SUPPORT, NOT BE REMOVED UNTIL 2 DAYS AFTER GROUT PLACEMENT.



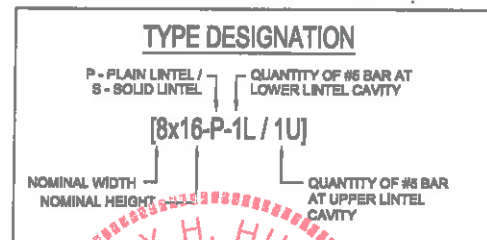
- NOTES:
1. 7/32" STIRRUPS FOR COMMERCIAL CONCRETE LITELS ONLY
 2. MIN. BEARING REQUIRED AT EA. END - 4"
 3. STANDARD FOR REINF. STEEL - ASTM A615

TYPICAL LINTEL SECTION PRECAST CONCRETE



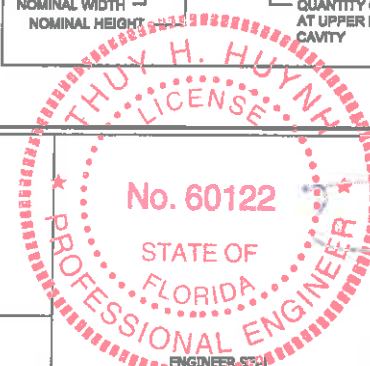
- NOTES:
1. 7/32" STIRRUPS FOR COMMERCIAL CONCRETE LITELS ONLY
 2. MIN. BEARING REQUIRED AT EA. END - 4"
 3. STANDARD FOR REINF. STEEL - ASTM A615

TYPICAL LINTEL SECTION PRESTRESS CONCRETE



P.O. BOX 3400
Apollo Beach,
Florida 33572 Phone:
813.645.0166
Fax: 813.645.9698
www.danscoengineering.com
CA 25948

GENERAL NOTES & DETAILS 8" LINTEL



JAN 02 2018

JOB NO.: 371068

SAMUEL A. GREENBERG, P.E. #34245
 THUY H. HUYNH, P.E. #60122

SHT. NO. SK1 of 23



QUALITY PRECAST COMPANY

"STRONG" ON SERVICE
 P.O. Box 11 - Brandon, Florida 33509-0011
 www.qualityprecast.com
 (800) 752-1730

Pro-Crete Materials Corporation /
 Quality Precast Co. FL 23932

Distributors for:

Commercial Concrete Products, Inc./
 Quality Precast Co. FL 1774 - R5

GRAVITY & UPLIFT SAFE LOADS (PLF)
8" x 8" LINTELS

LINTEL LENGTH	CLEAR SPAN	TYPE	TOP BAR	BOTTOM BARS		GRAVITY			UPLIFT	
						PLAIN	(0)#5L (1)#5U	(1)#5L (1)#5U	(0)#5L (1)#5U	(1)#5L (2)#5U
									DET. A	DET. B
2' - 10"	1' - 6"	Precast	2 - #2	2 - #2	NONE	2318	1550	3733	3772	3772
3' - 6"	2' - 2"	Precast	2 - #2	2 - #2	NONE	1438	952	2485	2504	2504
4' - 0"	2' - 8"	Precast	2 - #2	2 - #2	NONE	1085	700	1981	2000	2000
4' - 6"	3' - 2"	Precast	2 - #2	2 - #2	NONE	819	533	1625	1665	1665
4' - 8"	3' - 4"	Precast	(2) D4.5 Wre	2 - #3	NONE	1453	2654	2654	2574	2574
5' - 4"	4' - 0"	Precast	2 - #2	2 - #3	NONE	931	1247	1319	1301	1301
5' - 10"	4' - 6"	Precast	2 - #2	2 - #3	NONE	817	1024	1161	1151	1151
6' - 6"	5' - 2"	Precast	2 - #2	2 - #4	NONE	692	1139	1139	968	968
7' - 6"	6' - 2"	Precast	2 - #2	2 - #4	NONE	570	938	938	716	807
7' - 8"	6' - 4"	Precast	(2) D4.5 Wre	2 - #4	NONE	619	1130	1130	1115	1115
8' - 0"	6' - 8"	Precast	(2) D4.5 Wre	2 - #4	NONE	581	1062	1062	1048	1048
8' - 4"	7' - 0"	Precast	(2) D4.5 Wre	2 - #4	NONE	548	1001	1001	979	979
8' - 6"	7' - 2"	Precast	2 - #2	2 - #4	NONE	483	777	720	552	692
9' - 4"	8' - 0"	Precast	2 - #2	2 - #4	NONE	428	633	639	454	618
10' - 6"	9' - 2"	Precast	2 - #2	2 - #4	NONE	368	487	550	356	538
11' - 4"	10' - 0"	Precast	2 - #3	2 - #5	NONE	330	544	544	430	507
12' - 0"	10' - 8"	Precast	2 - #3	2 - #5	NONE	308	507	507	383	475
12' - 6"	11' - 2"	Precast	2 - #3	2 - #5	NONE	312	570	570	391	570
13' - 4"	12' - 0"	Precast	2 - #3	2 - #5	NONE	270	433	414	308	416
14' - 0"	12' - 8"	Precast	2 - #4	2 - #5	NONE	254	388	390	279	376
14' - 8"	13' - 4"	Prestressed	2 - #3	2 - #5	NONE	N.R.	N.R.	470	298	393
15' - 4"	14' - 0"	Prestressed	2 - #3	2 - #5	NONE	N.R.	N.R.	428	274	374
17' - 4"	18' - 0"	Prestressed	2 - #3	2 - #5	NONE	N.R.	N.R.	324	215	322
19' - 4"	18' - 0"	Prestressed	2 - #4	2 - #5	NONE	N.R.	N.R.	252	202	281
20' - 0"	18' - 8"	Prestressed	2 - #3	2 - #5	NONE	N.R.	256	256	188	262
21' - 4"	20' - 0"	Prestressed	2 - #4	2 - #5	NONE	N.R.	N.R.	200	165	229
22' - 0"	20' - 8"	Prestressed	2 - #4	2 - #5	NONE	N.R.	N.R.	185	155	215
24' - 0"	22' - 8"	Prestressed	2 - #4	2 - #5	NONE	N.R.	N.R.	149	124	179



DETAIL 'A' DETAIL 'B' DETAIL 'C' DETAIL 'D'

N.R. - NOT RECOMMENDED

P.O. BOX 3400
 Apollo Beach,
 Florida 33572 Phone:
 813.645.0166
 Fax: 813.645.9498
 www.danscoengineering.com
 CA 259-48

DANSKO
 ENGINEERING, LLC

© 2012-THIS DRAWING AND DESIGN ARE THE JOINT PROPERTY OF DANSKO ENGINEERING, LLC AND THE CLIENT ON THE PROJECT. ANY REPRODUCTION OR UNAUTHORIZED USE IS PROHIBITED.

GRAVITY & UPLIFT SAFE LOADS
8"x8" LINTEL

JOB NO.: 371068

SAMUEL A. GREENBERG, P.E. #34245
 THUY H. HUYNH, P.E. #60122

THUY H. HUYNH
 LICENSE
 No. 60122
 STATE OF
 FLORIDA
 PROFESSIONAL ENGINEER

ENGINEER SEAL

Sell
 JAN 02 2018

SHT. NO. SK2 of 23



QUALITY PRECAST COMPANY

"STRONG" ON SERVICE
 P.O. Box 11 - Brandon, Florida 33509-0011
 www.qualityprecast.com
 (800) 752-1730

www.qualityprecast.com

Pro-Crete Materials Corporation /
 Quality Precast Co. FL 23832

Distributors for:

Commercial Concrete Products, Inc./
 Quality Precast Co. FL 1774 - R5

GRAVITY & UPLIFT SAFE LOADS (PLF)

8" x 12" LINTELS

LINTEL LENGTH	CLEAR SPAN	TYPE	TOP BAR	BOTTOM BARS		GRAVITY		UPLIFT	
						(0)#5L (1)#5U	(1)#5L (1)#5U	(0)#5L (1)#5U	(1)#5L (1)#5U
						DET. E	DET. F	DET. E & F	DET. G
2' - 10"	1' - 6"	Precast	2 - #2	2 - #2	NONE	2615	10000	10000	10000
3' - 6"	2' - 2"	Precast	2 - #2	2 - #2	NONE	1609	6039	6093	10000
4' - 0"	2' - 8"	Precast	2 - #2	2 - #2	NONE	1186	4362	4416	10000
4' - 6"	3' - 2"	Precast	2 - #2	2 - #2	NONE	907	3408	3463	10000
4' - 8"	3' - 4"	Precast	(2) D4.5 Wires	2 - #3	NONE	4683	5137	5717	5717
5' - 4"	4' - 0"	Precast	2 - #2	2 - #3	NONE	2135	2589	2547	2547
5' - 10"	4' - 6"	Precast	2 - #2	2 - #3	NONE	1755	2207	2198	2198
6' - 6"	5' - 2"	Precast	2 - #2	2 - #4	NONE	2024	2024	1778	1824
7' - 8"	6' - 2"	Precast	2 - #2	2 - #4	NONE	1624	1624	1316	1483
7' - 8"	6' - 4"	Precast	(2) D4.5 Wires	2 - #4	NONE	1921	1921	2035	2035
8' - 0"	6' - 8"	Precast	(2) D4.5 Wires	2 - #4	NONE	1792	1792	1862	1897
8' - 4"	7' - 0"	Precast	(2) D4.5 Wires	2 - #4	NONE	1679	1679	1699	1776
8' - 6"	7' - 2"	Precast	2 - #2	2 - #4	NONE	1352	1352	1014	1249
9' - 4"	8' - 0"	Precast	2 - #2	2 - #4	NONE	1110	1114	835	1103
10' - 6"	8' - 2"	Precast	2 - #2	2 - #4	NONE	858	949	654	949
11' - 4"	10' - 0"	Precast	2 - #3	2 - #5	NONE	903	903	787	878
12' - 0"	10' - 8"	Precast	2 - #3	2 - #5	NONE	838	838	699	818
12' - 6"	11' - 2"	Precast	2 - #3	2 - #5	NONE	937	937	685	978
13' - 4"	12' - 0"	Precast	2 - #3	2 - #5	NONE	729	729	563	720
14' - 0"	12' - 8"	Precast	2 - #4	2 - #5	NONE	685	685	510	680
14' - 8"	13' - 4"	Prestressed	2 - #3	2 - #5	NONE	N.R.	1008	494	635
15' - 4"	14' - 0"	Prestressed	2 - #3	2 - #5	NONE	N.R.	916	453	603
17' - 4"	16' - 0"	Prestressed	2 - #3	2 - #5	NONE	N.R.	702	356	524
19' - 4"	18' - 0"	Prestressed	2 - #4	2 - #5	NONE	N.R.	553	340	438
20' - 0"	18' - 8"	Prestressed	2 - #3	2 - #5	NONE	607	607	317	601
21' - 4"	20' - 0"	Prestressed	2 - #4	2 - #5	NONE	N.R.	443	277	392
22' - 0"	20' - 8"	Prestressed	2 - #4	2 - #5	NONE	N.R.	414	260	380
24' - 0"	22' - 8"	Prestressed	2 - #4	2 - #5	NONE	N.R.	339	217	345

N.R. - NOT RECOMMENDED



DETAIL 'E' DETAIL 'F' DETAIL 'G'

P.O. BOX 3400
 Apollo Beach,
 Florida 33572 Phone:
 813.645.0164
 Fax: 813.645.9698
 www.danscoengineering.com
 CA 25948

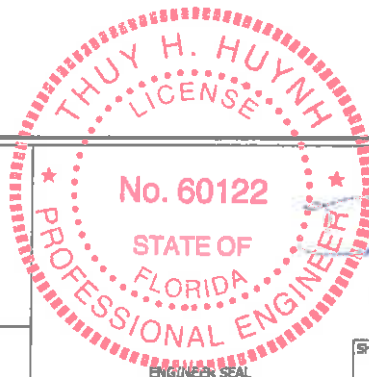


© 2012-2018 DRAWINGS AND DESIGNS ARE THE JOINT PROPERTY OF DANSKO ENGINEERING, LLC AND THE CLIENT ON THE PROJECT. ANY REPRODUCTION OR UNAUTHORIZED USE IS PROHIBITED.

GRAVITY & UPLIFT SAFE LOADS 8"x12" LINTEL

JOB NO.: 371068

SAMUEL A. GREENBERG, P.E. #34245
 THUY H. HUYNH, P.E. #60122



JAN 02 2018

SHT. NO. SK3 of 23



QUALITY PRECAST COMPANY

"STRONG" ON SERVICE
 P.O. Box 11 - Brandon, Florida 33509-0011
 www.qualityprecast.com
 (800) 752-1730

www.qualityprecast.com

Pro-Crete Materials Corporation /
 Quality Precast Co. FL 23832

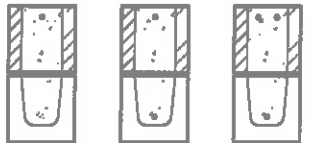
Distributors for:

Commercial Concrete Products, Inc./
 Quality Precast Co. FL 1774 - R5

GRAVITY & UPLIFT SAFE LOADS (PLF)

8" x 16" LINTELS

LINTEL LENGTH	CLEAR SPAN	TYPE	TOP BAR	BOTTOM BARS		GRAVITY		UPLIFT	
						(0)#5L (1)#5U	(1)#5L (1)#5U	(0)#5L (1)#5U (1)#5L (1)#5U	(1)#5L (2)#5U
						DET. H	DET. J	DET. H & J	DET. K
2' - 10"	1' - 6"	Precast	2 - #2	2 - #2	NONE	4896*	6467*	4896*	4896*
3' - 8"	2' - 2"	Precast	2 - #2	2 - #2	NONE	3114	8164	4439	8164*
4' - 0"	2' - 8"	Precast	2 - #2	2 - #2	NONE	2305	8020	3322	8987
4' - 6"	3' - 2"	Precast	2 - #2	2 - #2	NONE	1770	5743	2582	6353
4' - 8"	3' - 4"	Precast	(2) D4.5 Wire	2 - #3	NONE	6614	10000	9053	10000
5' - 4"	4' - 0"	Precast	2 - #2	2 - #3	NONE	3478	4460	1806	4275
5' - 10"	4' - 6"	Precast	2 - #2	2 - #3	NONE	2863	3693	1499	3577
6' - 6"	5' - 2"	Precast	2 - #2	2 - #4	NONE	3227	3227	1201	2939
7' - 8"	6' - 2"	Precast	2 - #2	2 - #4	NONE	2498	2498	900	2322
7' - 8"	6' - 4"	Precast	(2) D4.5 Wire	2 - #4	NONE	3071	3071	2916	3049
8' - 0"	6' - 8"	Precast	(2) D4.5 Wire	2 - #4	NONE	2831	2831	2651	2811
8' - 4"	7' - 0"	Precast	(2) D4.5 Wire	2 - #4	NONE	2625	2625	2421	2607
8' - 6"	7' - 2"	Precast	2 - #2	2 - #4	NONE	1946	1934	703	1922
9' - 4"	8' - 0"	Precast	2 - #2	2 - #4	NONE	1593	1674	586	1628
10' - 6"	9' - 2"	Precast	2 - #2	2 - #4	NONE	1329	1407	468	1285
11' - 4"	10' - 0"	Precast	2 - #3	2 - #5	NONE	1312	1312	406	1104
12' - 0"	10' - 8"	Precast	2 - #3	2 - #5	NONE	1210	1210	366	986
12' - 6"	11' - 2"	Precast	2 - #3	2 - #5	NONE	1354	1354	981	1354
13' - 4"	12' - 0"	Precast	2 - #3	2 - #5	NONE	1045	1045	303	802
14' - 0"	12' - 8"	Precast	2 - #4	2 - #5	NONE	978	978	278	730
14' - 8"	13' - 4"	Prestressed	2 - #3	2 - #5	NONE	978	1418	422	830
15' - 4"	14' - 0"	Prestressed	2 - #3	2 - #5	NONE	N.R.	1290	387	760
17' - 4"	16' - 0"	Prestressed	2 - #3	2 - #5	NONE	N.R.	952	326	641
19' - 4"	18' - 0"	Prestressed	2 - #4	2 - #5	NONE	N.R.	751	266	523
20' - 0"	18' - 8"	Prestressed	2 - #3	2 - #5	NONE	961	961	446	872
21' - 4"	20' - 0"	Prestressed	2 - #4	2 - #5	NONE	N.R.	678	219	431
22' - 0"	20' - 8"	Prestressed	2 - #4	2 - #5	NONE	N.R.	634	226	445
24' - 0"	22' - 8"	Prestressed	2 - #4	2 - #5	NONE	N.R.	522	174	341



DETAIL 'H' DETAIL 'J' DETAIL 'K'

N.R. - NOT RECOMMENDED

* LINTEL MEETS DEEP BEAM CRITERIA

NOTE #1: (1) #4 MIN. REQUIRED FOR DEEP BEAM ONLY

P.O. BOX 3400
 Apollo Beach,
 Florida 33572 Phone:
 813.645.0166
 Fax: 813.645.9698
 www.danscoengineering.com
 CA 25948



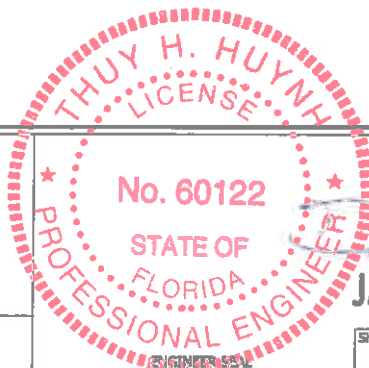
© 2017-2018 DRAWINGS AND DESIGNS ARE THE JOINT
 PROPERTY OF DANSKO ENGINEERING, LLC AND THE
 CLIENT ON THIS PROJECT. ANY REPRODUCTION OR
 UNAUTHORIZED USE IS PROHIBITED.

GRAVITY & UPLIFT SAFE LOADS 8"x16" LINTEL

JOB NO.: 371068

SAMUEL A. GREENBERG, P.E. #34245

THUY H. HUYNH, P.E. #60122



JAN 02 2018

SHT. NO.

SK4 of 23



QUALITY PRECAST COMPANY

"STRONG" ON SERVICE
 P.O. Box 11 - Brandon, Florida 33509-0011
 www.qualityprecast.com
 (800) 752-1730

www.qualityprecast.com

Pro-Crete Materials Corporation /
 Quality Precast Co. FL 23832

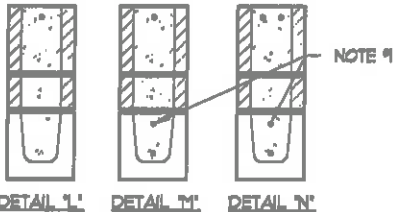
Distributors for:

Commercial Concrete Products, Inc./
 Quality Precast Co. FL 1774 - R6

GRAVITY & UPLIFT SAFE LOADS (PLF)

8" x 20" LINTELS

LINTEL LENGTH	CLEAR SPAN	TYPE	TOP BAR	BOTTOM BARS		GRAVITY		UPLIFT	
						(0)#5L (1)#5U	(1)#5L (1)#5U	(0)#5L (1)#5U (1)#5L (1)#5U	(1)#5L (2)#5U
						DET. L	DET. M	DET. L & M	DET. N
2' - 10"	1' - 6"	Precast	2 - #2	2 - #2	NONE	6570*	8333*	6570*	6570*
3' - 6"	2' - 2"	Precast	2 - #2	2 - #2	NONE	4217*	6385*	4872*	4872*
4' - 0"	2' - 8"	Precast	2 - #2	2 - #2	NONE	3125	7192*	4373	7192*
4' - 6"	3' - 2"	Precast	2 - #2	2 - #2	NONE	2400	8507	3397	9856
4' - 8"	3' - 4"	Precast	(2) D4.5 Wire	2 - #3	NONE	8548	10000	10000	10000
5' - 4"	4' - 0"	Precast	2 - #2	2 - #3	NONE	3077	7196	2374	6859
5' - 10"	4' - 6"	Precast	2 - #2	2 - #3	NONE	2529	5877	1971	5653
6' - 6"	5' - 2"	Precast	2 - #2	2 - #4	NONE	4504	4598	1578	4421
7' - 6"	6' - 2"	Precast	2 - #2	2 - #4	NONE	3314	3408	1181	3336
7' - 8"	6' - 4"	Precast	(2) D4.5 Wire	2 - #4	NONE	4456	4456	3785	4427
8' - 0"	6' - 8"	Precast	(2) D4.5 Wire	2 - #4	NONE	4047	4047	3443	4021
8' - 4"	7' - 0"	Precast	(2) D4.5 Wire	2 - #4	NONE	3706	3706	3144	3883
8' - 6"	7' - 2"	Precast	2 - #2	2 - #4	NONE	2584	2700	920	2802
9' - 4"	8' - 0"	Precast	2 - #2	2 - #4	NONE	2204	2298	767	2151
10' - 6"	8' - 2"	Precast	2 - #2	2 - #4	NONE	1767	1897	612	1696
11' - 4"	10' - 0"	Precast	2 - #3	2 - #5	NONE	1742	1742	530	1456
12' - 0"	10' - 8"	Precast	2 - #3	2 - #5	NONE	1596	1596	476	1300
12' - 6"	11' - 2"	Precast	2 - #3	2 - #5	NONE	1775	1775	1279	1775
13' - 4"	12' - 0"	Precast	2 - #3	2 - #5	NONE	1365	1365	393	1057
14' - 0"	12' - 8"	Precast	2 - #4	2 - #5	NONE	1272	1272	360	981
14' - 8"	13' - 4"	Prestressed	2 - #3	2 - #5	NONE	1272	1893	506	994
15' - 4"	14' - 0"	Prestressed	2 - #3	2 - #5	NONE	N.R.	1724	484	915
17' - 4"	16' - 0"	Prestressed	2 - #3	2 - #5	NONE	N.R.	1330	365	720
19' - 4"	18' - 0"	Prestressed	2 - #4	2 - #5	NONE	N.R.	1054	348	686
20' - 0"	18' - 8"	Prestressed	2 - #3	2 - #5	NONE	1008	1008	573	1048
21' - 4"	20' - 0"	Prestressed	2 - #4	2 - #5	NONE	N.R.	853	308	605
22' - 0"	20' - 8"	Prestressed	2 - #4	2 - #5	NONE	N.R.	798	290	573
24' - 0"	22' - 8"	Prestressed	2 - #4	2 - #5	NONE	N.R.	659	245	483



N.R. - NOT RECOMMENDED

* LINTEL MEETS DEEP BEAM CRITERIA

NOTE #1: (1) #4 MIN. REQUIRED FOR DEEP BEAM ONLY

P.O. BOX 3400
 Apollo Beach,
 Florida 33572 Phone:
 813.645.0166
 Fax: 813.645.9698
 www.danscoengineering.com
 CA 23948

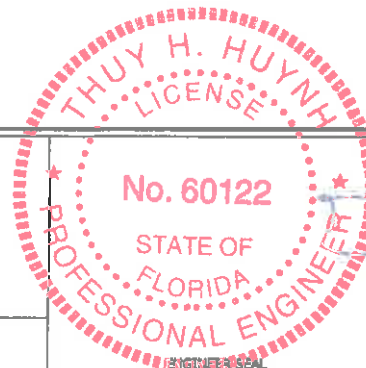


© 2011 THESE DRAWINGS AND DESIGNS ARE THE JOINT PROPERTY OF DANSCO ENGINEERING, LLC AND THE CLIENT ON THIS PROJECT. ANY REPRODUCTION OR UNAUTHORIZED USE IS PROHIBITED.

GRAVITY & UPLIFT SAFE LOADS 8"x20" LINTEL

JOB NO.: 371068

SAMUEL A. GREENBERG, P.E. #34245
 THUY H. HUYNH, P.E. #60122



JAN 02 2016
 SK5 of 23



QUALITY PRECAST COMPANY

"STRONG" ON SERVICE
 P.O. Box 11 - Brandon, Florida 33509-0011
 www.qualityprecast.com
 (800) 752-1730

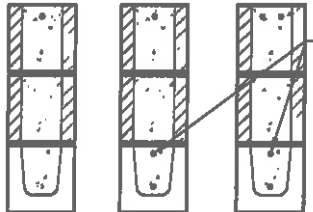
Pro-Crete Materials Corporation /
 Quality Precast Co. FL 23832

Distributors for:

Commercial Concrete Products, Inc./
 Quality Precast Co. FL 1774 - R6

GRAVITY & UPLIFT SAFE LOADS (PLF) 8" x 24" LINTELS

LINTEL LENGTH	CLEAR SPAN	TYPE	TOP BAR	BOTTOM BARS		GRAVITY				UPLIFT	
						(0)#5L (1)#5U	(1)#5L (1)#5U	(0)#5L (1)#5U	(1)#5L (1)#5U	(1)#5L (2)#5U	
						DET. P	DET. Q	DET. P & Q	DET. R		
2' - 10"	1' - 6"	Precast	2 - #2	2 - #2	NONE	8243*	10000*	8243*	8243*		
3' - 6"	2' - 2"	Precast	2 - #2	2 - #2	NONE	5321*	7708*	6195*	6195*		
4' - 0"	2' - 8"	Precast	2 - #2	2 - #2	NONE	3945*	6524*	5263*	5263*		
4' - 6"	3' - 2"	Precast	2 - #2	2 - #2	NONE	3033	6752*	4214	6752*		
4' - 8"	3' - 4"	Precast	(2) D4.5 Wire	2 - #3	NONE	6347*	6347*	6347*	6347*		
5' - 4"	4' - 0"	Precast	2 - #2	2 - #3	NONE	3848	9921	2944	8538		
5' - 10"	4' - 6"	Precast	2 - #2	2 - #3	NONE	3164	8183	2443	7066		
6' - 6"	5' - 2"	Precast	2 - #2	2 - #4	NONE	6159	7054	1955	5633		
7' - 6"	6' - 2"	Precast	2 - #2	2 - #4	NONE	4535	4864	1462	4185		
7' - 8"	6' - 4"	Precast	(2) D4.5 Wire	2 - #4	NONE	5967	6603	4657	6477		
8' - 0"	6' - 8"	Precast	(2) D4.5 Wire	2 - #4	NONE	5430	5524	4236	5756		
8' - 4"	7' - 0"	Precast	(2) D4.5 Wire	2 - #4	NONE	4961	4979	3869	5178		
8' - 6"	7' - 2"	Precast	2 - #2	2 - #4	NONE	3471	3702	1139	3236		
9' - 4"	8' - 0"	Precast	2 - #2	2 - #4	NONE	2841	3081	948	2675		
10' - 6"	9' - 2"	Precast	2 - #2	2 - #4	NONE	2540	2797	755	2108		
11' - 4"	10' - 0"	Precast	2 - #3	2 - #5	NONE	2252	2252	653	1809		
12' - 0"	10' - 8"	Precast	2 - #3	2 - #5	NONE	2048	2048	587	1615		
12' - 6"	11' - 2"	Precast	2 - #3	2 - #5	NONE	2269	2269	1577	2269		
13' - 4"	12' - 0"	Precast	2 - #3	2 - #5	NONE	1732	1732	484	1312		
14' - 0"	12' - 8"	Precast	2 - #4	2 - #5	NONE	1606	1606	443	1182		
14' - 8"	13' - 4"	Prestressed	2 - #3	2 - #5	NONE	1606	2345	626	1237		
15' - 4"	14' - 0"	Prestressed	2 - #3	2 - #5	NONE	N.R.	2137	574	1134		
17' - 4"	16' - 0"	Prestressed	2 - #3	2 - #5	NONE	N.R.	1651	451	892		
19' - 4"	18' - 0"	Prestressed	2 - #4	2 - #5	NONE	N.R.	1310	430	850		
20' - 0"	18' - 8"	Prestressed	2 - #3	2 - #5	NONE	1254	1254	702	1271		
21' - 4"	20' - 0"	Prestressed	2 - #4	2 - #5	NONE	N.R.	1062	381	751		
22' - 0"	20' - 8"	Prestressed	2 - #4	2 - #5	NONE	N.R.	994	359	710		
24' - 0"	22' - 8"	Prestressed	2 - #4	2 - #5	NONE	N.R.	824	302	598		



DETAIL 'P' DETAIL 'Q' DETAIL 'R'

NOTE #1

N.R. - NOT RECOMMENDED

* LINTEL MEETS DEEP BEAM CRITERIA

NOTE #1: (1) #4 MIN. REQUIRED FOR DEEP BEAM ONLY

P.O. BOX 3400
 Apollo Beach,
 Florida 33572 Phone:
 813.645.0166
 Fax: 813.645.9698
 www.danscoengineering.com
 CA 25948

GRAVITY & UPLIFT SAFE LOADS 8"x24" LINTEL

JOB NO.: 371068

SAMUEL A. GREENBERG, P.E. #34245
 THUY H. HUYNH, P.E. #60122

[Signature]
JAN 02 2018
 SHEET NO. SK6 of 23

© 2017 THESE DRAWINGS AND DESIGNS ARE THE JOINT PROPERTY OF DANSCO ENGINEERING, LLC AND THE CLIENT ON THIS PROJECT. ANY REPRODUCTION OR UNAUTHORIZED USE IS PROHIBITED.



QUALITY PRECAST COMPANY

"STRONG" ON SERVICE
 P.O. Box 11 - Brandon, Florida 33509-0011
 www.qualityprecast.com
 (800) 752-1730

Pro-Crete Materials Corporation /
 Quality Precast Co. FL 23932

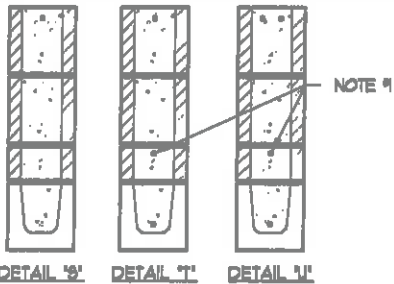
Distributors for:

Commercial Concrete Products, Inc./
 Quality Precast Co. FL 1774 - R5

GRAVITY & UPLIFT SAFE LOADS (PLF)

8" x 28" LINTELS

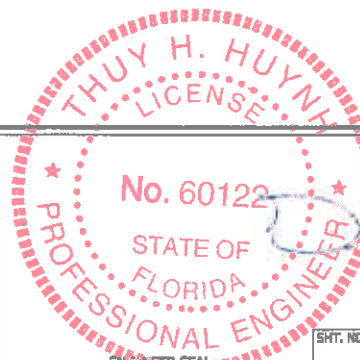
LINTEL LENGTH	CLEAR SPAN	TYPE	TOP BAR	BOTTOM BARS		GRAVITY		UPLIFT	
						(0)#5L (1)#5U	(1)#5L (1)#5U	(0)#5L (1)#5U (1)#5L (1)#5U	(1)#5L (2)#5U
						DET. S	DET. T	DET. S & T	DET. U
2' - 10"	1' - 6"	Precast	2 - #2	2 - #2	NONE	9916*	10000*	9916*	9916*
3' - 8"	2' - 2"	Precast	2 - #2	2 - #2	NONE	6426*	9031*	7518*	7518*
4' - 0"	2' - 8"	Precast	2 - #2	2 - #2	NONE	4765*	7627*	6366*	6366*
4' - 6"	3' - 2"	Precast	2 - #2	2 - #2	NONE	3668*	8541*	5031*	5031*
4' - 8"	3' - 4"	Precast	(2) D4.5 Wre	2 - #3	NONE	7220*	7220*	7220*	7220*
5' - 4"	4' - 0"	Precast	2 - #2	2 - #3	NONE	4620	5780*	3513	5780*
5' - 10"	4' - 6"	Precast	2 - #2	2 - #3	NONE	3800	6548	2915	5688
6' - 6"	5' - 2"	Precast	2 - #2	2 - #4	NONE	7376	10000	2332	4538
7' - 8"	6' - 2"	Precast	2 - #2	2 - #4	NONE	5433	7067	1743	3376
7' - 8"	6' - 4"	Precast	(2) D4.5 Wre	2 - #4	NONE	7086	9405	5529	9872
8' - 0"	6' - 8"	Precast	(2) D4.5 Wre	2 - #4	NONE	6448	8101	5030	8467
8' - 4"	7' - 0"	Precast	(2) D4.5 Wre	2 - #4	NONE	5892	7113	4594	7410
8' - 6"	7' - 2"	Precast	2 - #2	2 - #4	NONE	4159	5073	1357	2815
9' - 4"	8' - 0"	Precast	2 - #2	2 - #4	NONE	3405	4099	1129	2164
10' - 6"	9' - 2"	Precast	2 - #2	2 - #4	NONE	2645	3222	899	1710
11' - 4"	10' - 0"	Precast	2 - #3	2 - #5	NONE	2888	2868	777	1470
12' - 0"	10' - 8"	Precast	2 - #3	2 - #5	NONE	2586	2586	698	1314
12' - 6"	11' - 2"	Precast	2 - #3	2 - #5	NONE	2796	2796	1875	2857
13' - 4"	12' - 0"	Precast	2 - #3	2 - #5	NONE	2157	2796	575	1071
14' - 0"	12' - 8"	Precast	2 - #4	2 - #5	NONE	1988	1950	526	975
14' - 8"	13' - 4"	Prestressed	2 - #3	2 - #5	NONE	N.R.	2871	746	1474
15' - 4"	14' - 0"	Prestressed	2 - #3	2 - #5	NONE	N.R.	2616	684	1353
17' - 4"	16' - 0"	Prestressed	2 - #3	2 - #5	NONE	N.R.	2023	587	1161
19' - 4"	18' - 0"	Prestressed	2 - #4	2 - #5	NONE	N.R.	1607	513	1015
20' - 0"	18' - 8"	Prestressed	2 - #3	2 - #5	NONE	1538	1538	830	1511
21' - 4"	20' - 0"	Prestressed	2 - #4	2 - #5	NONE	N.R.	1168	454	896
22' - 0"	20' - 8"	Prestressed	2 - #4	2 - #5	NONE	N.R.	1222	428	847
24' - 0"	22' - 8"	Prestressed	2 - #4	2 - #5	NONE	N.R.	1014	360	714



N.R. - NOT RECOMMENDED

* LINTEL MEETS DEEP BEAM CRITERIA

NOTE #1: (1) #4 MIN. REQUIRED FOR DEEP BEAM ONLY



JAN 02 2018

DANSKO ENGINEERING, LLC
 P.O. BOX 3400
 Apollo Beach, Florida 33572
 Phone: 813.645.0166
 Fax: 813.645.9698
 www.danscoengineering.com
 CA 25948

© 2012 THESE DRAWINGS AND DESIGNS ARE THE JOINT PROPERTY OF DANSKO ENGINEERING, LLC AND THE CLIENT ON THIS PROJECT. ANY REPRODUCTION OR UNAUTHORIZED USE IS PROHIBITED.

**GRAVITY & UPLIFT SAFE LOADS
 8"x28" LINTEL**

JOB NO.: 371068
 SAMUEL A. GREENBERG, P.E. #34245
 THUY H. HUYNH, P.E. #60122

SHT. NO. SK7 of 23



QUALITY PRECAST COMPANY

"STRONG" ON SERVICE
 P.O. Box 11 - Brandon, Florida 33509-0011
 www.qualityprecast.com
 (800) 752-1730

Pro-Crete Materials Corporation /
 Quality Precast Co. FL 23832

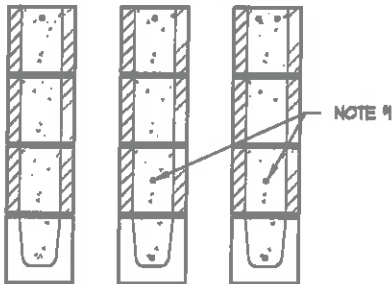
Distributors for:

Commercial Concrete Products, Inc./
 Quality Precast Co. FL 1774 - R6

GRAVITY & UPLIFT SAFE LOADS (PLF)

8" x 32" LINTELS

LINTEL LENGTH	CLEAR SPAN	TYPE	TOP BAR	BOTTOM BARS		GRAVITY		UPLIFT	
						(0)#5L (1)#5U	(1)#5L (1)#5U	(0)#5L (1)#5U	(1)#5L (2)#5U
						DET. V	DET. W	DET. V & W	DET. Y
2' - 10"	1' - 6"	Precast	2 - #2	2 - #2	NONE	10000*	10000*	10000*	10000*
3' - 6"	2' - 2"	Precast	2 - #2	2 - #2	NONE	7531*	10000*	8792*	8700*
4' - 0"	2' - 8"	Precast	2 - #2	2 - #2	NONE	5587*	8751*	7490*	7190*
4' - 6"	3' - 2"	Precast	2 - #2	2 - #2	NONE	4300*	7565*	5849*	5849*
4' - 8"	3' - 4"	Precast	(2) D4.5 Wires	2 - #3	NONE	8194*	8194*	8194*	8194*
5' - 4"	4' - 0"	Precast	2 - #2	2 - #3	NONE	5392*	6259*	4084*	4084*
5' - 10"	4' - 6"	Precast	2 - #2	2 - #3	NONE	4435	5776*	3387	5776*
6' - 6"	5' - 2"	Precast	2 - #2	2 - #4	NONE	5719	10000	2709	5283
7' - 6"	6' - 2"	Precast	2 - #2	2 - #4	NONE	4203	9087	2025	3931
7' - 8"	6' - 4"	Precast	(2) D4.5 Wires	2 - #4	NONE	5473	9564	6402	10000
8' - 0"	6' - 8"	Precast	(2) D4.5 Wires	2 - #4	NONE	4978	8706	5824	10000
8' - 4"	7' - 0"	Precast	(2) D4.5 Wires	2 - #4	NONE	4546	7957	5320	10000
8' - 6"	7' - 2"	Precast	2 - #2	2 - #4	NONE	3209	6742	1576	3044
9' - 4"	8' - 0"	Precast	2 - #2	2 - #4	NONE	2621	5257	1310	2519
10' - 6"	9' - 2"	Precast	2 - #2	2 - #4	NONE	2028	4007	1042	1989
11' - 4"	10' - 0"	Precast	2 - #3	2 - #5	NONE	3630	3552	872	1710
12' - 0"	10' - 8"	Precast	2 - #3	2 - #5	NONE	3191	3171	783	1476
12' - 6"	11' - 2"	Precast	2 - #3	2 - #5	NONE	2919	3369	2174	3572
13' - 4"	12' - 0"	Precast	2 - #3	2 - #5	NONE	2535	2805	645	1203
14' - 0"	12' - 8"	Precast	2 - #4	2 - #5	NONE	2279	2389	609	1133
14' - 8"	13' - 4"	Prestressed	2 - #3	2 - #5	NONE	N.R.	3232	865	1715
15' - 4"	14' - 0"	Prestressed	2 - #3	2 - #5	NONE	N.R.	2946	793	1572
17' - 4"	16' - 0"	Prestressed	2 - #3	2 - #5	NONE	N.R.	2280	680	1349
19' - 4"	18' - 0"	Prestressed	2 - #4	2 - #5	NONE	N.R.	1814	595	1179
20' - 0"	18' - 8"	Prestressed	2 - #3	2 - #5	NONE	1737	1737	959	1778
21' - 4"	20' - 0"	Prestressed	2 - #4	2 - #5	NONE	N.R.	1474	527	1042
22' - 0"	20' - 8"	Prestressed	2 - #4	2 - #5	NONE	N.R.	1381	497	985
24' - 0"	22' - 8"	Prestressed	2 - #4	2 - #5	NONE	N.R.	1147	418	829



DETAIL 'V' DETAIL 'W' DETAIL 'Y'

N.R. - NOT RECOMMENDED

* LINTEL MEETS DEEP BEAM CRITERIA

NOTE #1: (1) #4 MIN. REQUIRED FOR DEEP BEAM ONLY

P.O. BOX 3400
 Apollo Beach,
 Florida 33572 Phone:
 813.645.0166
 Fax: 813.645.9698
 www.danscoengineering.com
 CA 259-48

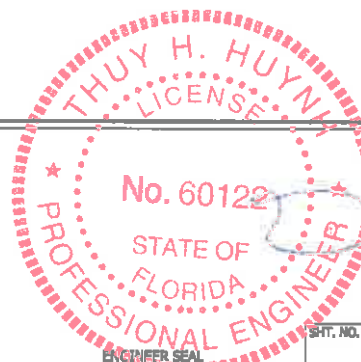
DANSKO
 ENGINEERING, LLC

GRAVITY & UPLIFT SAFE LOADS
8"x32" LINTEL

JOB NO.: 371068

SAMUEL A. GREENBERG, P.E. #34245

THUY H. HUYNH, P.E. #60122



JAN 02 2018

SHEET NO.

SK8 of 23

© 2012 THESE DRAWINGS AND DESIGNS ARE THE JOINT PROPERTY OF DANSKO ENGINEERING, LLC AND THE CLIENT ON THE PROJECT. ANY REPRODUCTION OR UNAUTHORIZED USE IS PROHIBITED.



QUALITY PRECAST COMPANY

"STRONG" ON SERVICE
P.O. Box 11 - Brandon, Florida 33509-0011
www.qualityprecast.com
(800) 752-1730

www.qualityprecast.com

Pro-Crete Materials Corporation /
Quality Precast Co. FL 23932

Distributors for:

Commercial Concrete Products, Inc./
Quality Precast Co. FL 1774 - R6

SAFE LATERAL LOADS (PLF) 8" x 8" LINTELS

LENGTH	TYPE	PLAIN	SOLID
		DET. A	DET. B
2' - 10"	Precast	1105	2103
3' - 6"	Precast	689	1310
4' - 0"	Precast	514	977
4' - 6"	Precast	398	757
4' - 8"	Precast	810	2459
5' - 4"	Precast	430	836
5' - 10"	Precast	356	690
6' - 6"	Precast	410	818
7' - 6"	Precast	303	608
7' - 8"	Precast	392	1100
8' - 0"	Precast	363	1037
8' - 4"	Precast	318	981
8' - 6"	Precast	234	467
9' - 4"	Precast	192	384
10' - 6"	Precast	151	301
11' - 4"	Precast	132	417
12' - 0"	Precast	111	370
12' - 6"	Precast	98	544
13' - 4"	Precast	82	298
14' - 0"	Precast	71	322
14' - 8"	Prestressed	N.R.	283
15' - 4"	Prestressed	N.R.	252
17' - 4"	Prestressed	N.R.	183
19' - 4"	Prestressed	N.R.	167
20' - 0"	Prestressed	N.R.	167
21' - 4"	Prestressed	N.R.	129
22' - 0"	Prestressed	N.R.	120
24' - 0"	Prestressed	N.R.	96



N.R. - NOT RECOMMENDED

DETAIL 'A'

DETAIL 'B'



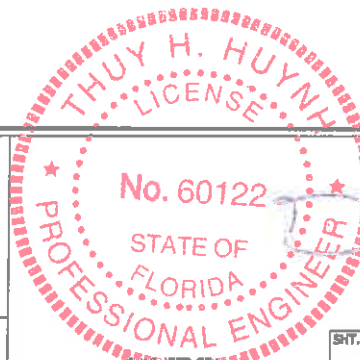
P.O. BOX 3400
Apolla Beach,
Florida 33572 Phone:
813.645.0166
Fax: 813.645.9698
www.danscoengineering.com
CA 25948

SAFE LATERAL LOADS 8"x8" LINTEL

© 2017-08-22 DRAWINGS AND DESIGNS ARE THE JOINT
PROPERTY OF DANSCO ENGINEERING, LLC AND THE
CLIENT ON THIS PROJECT. ANY REPRODUCTION OR
UNAUTHORIZED USE IS PROHIBITED.

JOB NO.: 371068

SAMUEL A. GREENBERG, P.E. #34245
 THUY H. HUYNH, P.E. #60122



JAN 02 2018

SHT. NO. SK9 of 23



QUALITY PRECAST COMPANY

"STRONG" ON SERVICE
P.O. Box 11 - Brandon, Florida 33509-0011
www.qualityprecast.com
(800) 752-1730

www.qualityprecast.com

Pro-Crete Materials Corporation /
Quality Precast Co. FL 23832

Distributors for:

Commercial Concrete Products, Inc./
Quality Precast Co. FL 1774-R5

GRAVITY & UPLIFT SAFE LOADS (PLF)

8" x 8" RECESS DOOR HEADERS

LINTEL LENGTH	CLEAR SPAN	DOOR SIZE	TYPE	TOP BAR	BOTTOM BARS		GRAVITY			UPLIFT	
							PLAIN	(0)#5L (1)#5U	(1)#6L (1)#5U	(0)#5L (1)#5U (1)#5L (1)#5U	(1)#5L (2)#5U
							DET. DA	DET. DB	DET. DC	DET. DB & DC	DET. DF
3' - 8"	2' - 4"	2' - 0"	Precast	2 - #2	2 - #2	NONE	848	852	1195	1224	1224
4' - 0"	2' - 8"	2' - 4"	Precast	2 - #2	2 - #2	NONE	697	699	1050	1079	1079
4' - 2"	2' - 10"	2' - 6"	Precast	(2) D4.5 Wire	2 - #3	NONE	1346	1564	1564	1320	1320
4' - 4"	3' - 0"	2' - 8"	Precast	2 - #2	2 - #2	NONE	583	583	936	965	965
4' - 6"	3' - 2"	2' - 10"	Precast	2 - #2	2 - #2	NONE	536	535	887	916	916
4' - 8"	3' - 4"	3' - 0"	Precast	(2) D4.5 Wire	2 - #3	NONE	1091	1278	1278	1090	1090
5' - 8"	4' - 4"	4' - 0"	Precast	2 - #2	2 - #3	NONE	564	703	694	678	678
5' - 10"	4' - 6"	4' - 2"	Precast	2 - #2	2 - #3	NONE	542	659	668	654	654
6' - 8"	5' - 4"	5' - 0"	Precast	2 - #2	2 - #4	NONE	446	680	668	530	530
7' - 0"	5' - 8"	5' - 4"	Precast	2 - #2	2 - #4	NONE	419	639	668	478	500
7' - 6"	6' - 2"	5' - 10"	Precast	2 - #2	2 - #4	NONE	384	585	668	414	461
7' - 8"	6' - 4"	6' - 0"	Precast	(2) D4.5 Wire	2 - #4	NONE	494	627	627	485	532
9' - 8"	8' - 4"	8' - 0"	Precast	2 - #2	2 - #4	NONE	279	364	627	244	343

FOR 8" WIDE x 6" HIGH LINTELS, USE THE SAME TABLE LOAD VALUES ABOVE



2" RECESS



2" RECESS



2" RECESS



2" RECESS

DETAIL 'DA' DETAIL 'DB' DETAIL 'DC' DETAIL 'DF'

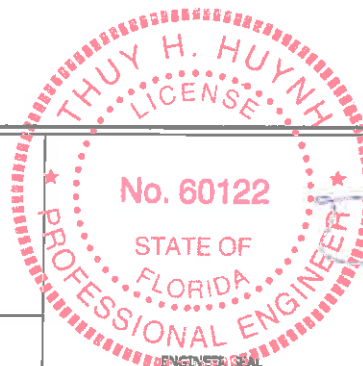


P.O. BOX 3400
Apollo Beach,
Florida 33572 Phone:
813.645.0166
Fax: 813.645.9698
www.danscoengineering.com
CA 25948

GRAVITY & UPLIFT SAFE LOADS 8"x8" RECESS DOOR HEADER

JOB NO.: 371068

SAMUEL A. GREENBERG, P.E. #34245
 THUY H. HUYNH, P.E. #60122



Thuy H. Huynh

JAN 02 2018

SHT. NO. SK10 of 23

© 2015 THESE DRAWINGS AND DESIGNS ARE THE JOINT PROPERTY OF DANSCO ENGINEERING, LLC AND THE CLIENT ON THIS PROJECT. ANY REPRODUCTION OR UNAUTHORIZED USE IS PROHIBITED.



QUALITY PRECAST COMPANY

"STRONG" ON SERVICE
 P.O. Box 11 - Brandon, Florida 33508-0011
 www.qualityprecast.com
 (800) 752-1730

www.qualityprecast.com

Pro-Crete Materials Corporation /
 Quality Precast Co. FL 23932

Distributors for:

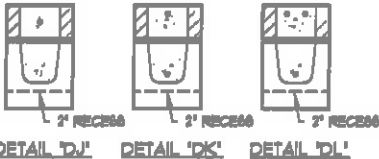
Commercial Concrete Products, Inc./
 Quality Precast Co. FL 1774 - R5

GRAVITY & UPLIFT SAFE LOADS (PLF)

8" x 12" RECESS DOOR HEADERS

LINTEL LENGTH	CLEAR SPAN	DOOR SIZE	TYPE	TOP BAR	BOTTOM BARS		GRAVITY		UPLIFT	
							(0)#6L (1)#5U	(1)#5L (1)#5U	(0)#5L (1)#5U	(1)#5L (2)#5U
							DET. DJ	DET. DK	DET. DJ & DK	DET. DL
3' - 8"	2' - 4"	2' - 0"	Precast	2 - #2	2 - #2	NONE	1152	3342	3386	3386
4' - 0"	2' - 8"	2' - 4"	Precast	2 - #2	2 - #2	NONE	945	2817	2861	2861
4' - 2"	2' - 10"	2' - 6"	Precast	(2) D4.5 Wire	2 - #3	NONE	2681	4259	3838	3838
4' - 4"	3' - 0"	2' - 8"	Precast	2 - #2	2 - #2	NONE	786	2433	2477	2477
4' - 6"	3' - 2"	2' - 10"	Precast	2 - #2	2 - #2	NONE	721	2277	2321	2321
4' - 8"	3' - 4"	3' - 0"	Precast	(2) D4.5 Wire	2 - #3	NONE	1986	3244	2965	2965
5' - 8"	4' - 4"	4' - 0"	Precast	2 - #2	2 - #3	NONE	1204	1822	1612	1612
5' - 10"	4' - 6"	4' - 2"	Precast	2 - #2	2 - #3	NONE	1388	1552	1544	1544
6' - 8"	5' - 4"	5' - 0"	Precast	2 - #2	2 - #4	NONE	1411	1411	1277	1277
7' - 0"	5' - 8"	5' - 4"	Precast	2 - #2	2 - #4	NONE	1315	1315	1170	1169
7' - 6"	6' - 2"	5' - 10"	Precast	2 - #2	2 - #4	NONE	1192	1192	1012	1066
7' - 8"	6' - 4"	6' - 0"	Precast	(2) D4.5 Wire	2 - #4	NONE	1346	1346	1225	1253
9' - 8"	8' - 4"	8' - 0"	Precast	2 - #2	2 - #4	NONE	805	782	597	771

FOR 8" WIDE x 6" HIGH LINTELS, USE THE SAME TABLE LOAD VALUES ABOVE



THUY H. HUYNH
 LICENSE
 No. 60122
 STATE OF
 FLORIDA
 PROFESSIONAL ENGINEER
 JAN 02 2018

[Signature]

ENGINEER SEAL

DE
DANSCO
 ENGINEERING, LLC

P.O. BOX 3400
 Apollo Beach,
 Florida 33572 Phone:
 813.645.0164
 Fax: 813.645.9698
 www.danscoengineering.com
 CA 29948

GRAVITY & UPLIFT SAFE LOADS
8"x12" RECESS DOOR HEADER

© 2017 THESE DRAWINGS AND DESIGNS ARE THE JOINT PROPERTY OF DANSCO ENGINEERING, LLC AND THE CLIENT ON THIS PROJECT. ANY REPRODUCTION OR UNAUTHORIZED USE IS PROHIBITED.

JOB NO.: 371068 SAMUEL A. GREENBERG, P.E. #34245
 THUY H. HUYNH, P.E. #60122

SHT. NO. SK11 of 23



QUALITY PRECAST COMPANY

"STRONG" ON SERVICE
 P.O. Box 11 - Brandon, Florida 33509-0011
 www.qualityprecast.com
 (800) 752-1730

Pro-Crete Materials Corporation /
 Quality Precast Co. FL 23932

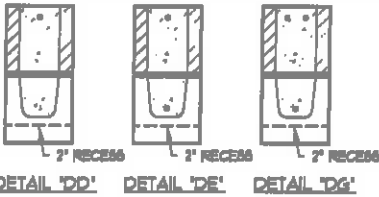
Distributors for:

Commercial Concrete Products, Inc./
 Quality Precast Co. FL 1774 - R5

GRAVITY & UPLIFT SAFE LOADS (PLF)

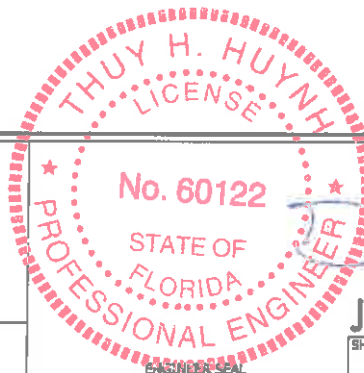
8" x 16" RECESS DOOR HEADERS

LINTEL LENGTH	CLEAR SPAN	DOOR SIZE	TYPE	TOP BAR	BOTTOM BARS		GRAVITY		UPLIFT	
							(0)#5L (1)#5U	(1)#5L (1)#5U	(0)#5L (1)#5U	(1)#5L (2)#5U
							DET. DD	DET. DE	DET. DD & DE	DET. DG
3' - 8"	2' - 4"	2' - 0"	Precast	2 - #2	2 - #2	NONE	2558	7405	6639	6639
4' - 0"	2' - 8"	2' - 4"	Precast	2 - #2	2 - #2	NONE	2104	8071	5464	5464
4' - 2"	2' - 10"	2' - 6"	Precast	(2) D4.5 Wire	2 - #3	NONE	4082	10000	7229	7229
4' - 4"	3' - 0"	2' - 8"	Precast	2 - #2	2 - #2	NONE	1758	4946	4381	4361
4' - 6"	3' - 2"	2' - 10"	Precast	2 - #2	2 - #2	NONE	1616	4526	4016	4016
4' - 8"	3' - 4"	3' - 0"	Precast	(2) D4.5 Wire	2 - #3	NONE	3011	6797	5100	5100
5' - 8"	4' - 4"	4' - 0"	Precast	2 - #2	2 - #3	NONE	2698	2903	2586	2586
5' - 10"	4' - 6"	4' - 2"	Precast	2 - #2	2 - #3	NONE	2533	2754	2461	2461
6' - 8"	5' - 4"	5' - 0"	Precast	2 - #2	2 - #4	NONE	2360	2360	1921	1920
7' - 0"	5' - 8"	5' - 4"	Precast	2 - #2	2 - #4	NONE	2175	2175	1733	1783
7' - 6"	6' - 2"	5' - 10"	Precast	2 - #2	2 - #4	NONE	1945	1945	1500	1610
7' - 8"	6' - 4"	6' - 0"	Precast	(2) D4.5 Wire	2 - #4	NONE	2214	2214	1780	1843
9' - 8"	8' - 4"	8' - 0"	Precast	2 - #2	2 - #4	NONE	1250	1257	884	1133



FOR 8" WIDE x 6" HIGH LINTELS, USE THE SAME TABLE LOAD VALUES ABOVE

**GRAVITY & UPLIFT SAFE LOADS
 8"x16" RECESS DOOR HEADER**



P.O. BOX 3400
 Apollo Beach,
 Florida 33572 Phone:
 813.645.0166
 Fax: 813.645.9698
 www.danscoengineering.com
 CA 25948

DANSKO ENGINEERING, LLC

© 2017 THESE DRAWINGS AND DESIGNS ARE THE JOINT PROPERTY OF DANSKO ENGINEERING, LLC AND THE CLIENT ON THIS PROJECT. ANY REPRODUCTION OR UNAUTHORIZED USE IS PROHIBITED.

JOB NO.: 371068 SAMUEL A. GREENBERG, P.E. #34245
 THUY H. HUYNH, P.E. #60122

JAN 02 2018
 SHEET NO. SK12 of 23



QUALITY PRECAST COMPANY

"STRONG" ON SERVICE
 P.O. Box 11 - Brandon, Florida 33509-0011
 www.qualityprecast.com
 (800) 752-1730

Pro-Crete Materials Corporation /
 Quality Precast Co. FL 23832

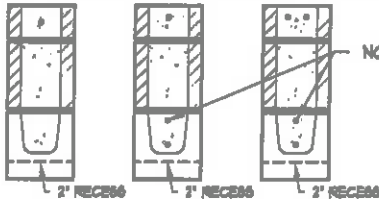
Distributors for:

Commercial Concrete Products, Inc./
 Quality Precast Co. FL 1774 - R5

GRAVITY & UPLIFT SAFE LOADS (PLF)

8" x 20" RECESS DOOR HEADERS

LINTEL LENGTH	CLEAR SPAN	DOOR SIZE	TYPE	TOP BAR	BOTTOM BARS		GRAVITY		UPLIFT	
							(0)#5L (1)#5U	(1)#5L (1)#5U	(0)#5L (1)#5U	(1)#5L (1)#5U
							DET. DM	DET. DN	DET. DM & DN	DET. DP
3' - 8"	2' - 4"	2' - 0"	Precast	2 - #2	2 - #2	NONE	3552	6213*	6213*	6213*
4' - 0"	2' - 8"	2' - 4"	Precast	2 - #2	2 - #2	NONE	2923	9877	5379	10000
4' - 2"	2' - 10"	2' - 6"	Precast	(2) D4.5 W/ro	2 - #3	NONE	5444	10000	6633	10000
4' - 4"	3' - 0"	2' - 8"	Precast	2 - #2	2 - #2	NONE	2445	8288	4520	8262
4' - 6"	3' - 2"	2' - 10"	Precast	2 - #2	2 - #2	NONE	2248	7632	4166	7332
4' - 8"	3' - 4"	3' - 0"	Precast	(2) D4.5 W/ro	2 - #3	NONE	4037	10000	4925	10000
5' - 8"	4' - 4"	4' - 0"	Precast	2 - #2	2 - #3	NONE	3711	4722	2542	4101
5' - 10"	4' - 6"	4' - 2"	Precast	2 - #2	2 - #3	NONE	3485	4417	2391	3858
6' - 8"	5' - 4"	5' - 0"	Precast	2 - #2	2 - #4	NONE	3031	3382	1803	2977
7' - 0"	5' - 8"	5' - 4"	Precast	2 - #2	2 - #4	NONE	3240	3240	1627	2728
7' - 6"	6' - 2"	5' - 10"	Precast	2 - #2	2 - #4	NONE	2845	2845	1408	2423
7' - 8"	6' - 4"	6' - 0"	Precast	(2) D4.5 W/ro	2 - #4	NONE	2163	3342	1425	2856
9' - 8"	8' - 4"	8' - 0"	Precast	2 - #2	2 - #4	NONE	1241	1771	806	1633



DETAIL 'DM' DETAIL 'DN' DETAIL 'DP'

* LINTEL MEETS DEEP BEAM CRITERIA

NOTE #1: (1) #4 MIN. REQUIRED FOR DEEP BEAM ONLY

FOR 8" WIDE x 6" HIGH LINTELS, USE THE SAME TABLE LOAD VALUES ABOVE

P.O. BOX 3400
 Apalachee Beach,
 Florida 33572 Phone:
 813.645.0166
 Fax: 813.645.9698
 www.danscoengineering.com
 CA 25948

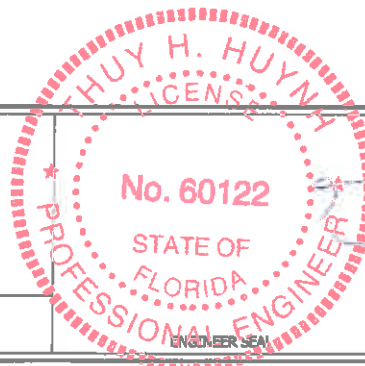


© 2013 THESE DRAWINGS AND DESIGNS ARE THE JOINT PROPERTY OF DANSCO ENGINEERING, LLC AND THE CLIENT ON THIS PROJECT. ANY REPRODUCTION OR UNAUTHORIZED USE IS PROHIBITED.

**GRAVITY & UPLIFT SAFE LOADS
 8"x20" RECESS DOOR HEADER**

JOB NO.: 371068

SAMUEL A. GREENBERG, P.E. #34245
 THUY H. HUYNH, P.E. #60122



Thuy H. Huynh
 JAN 02 2018

SHT. NO. SK13 of 23



QUALITY PRECAST COMPANY

"STRONG" ON SERVICE
 P.O. Box 11 - Brandon, Florida 33509-0011
 www.qualityprecast.com
 (800) 752-1730

www.qualityprecast.com

Pro-Crete Materials Corporation /
 Quality Precast Co. FL 23932

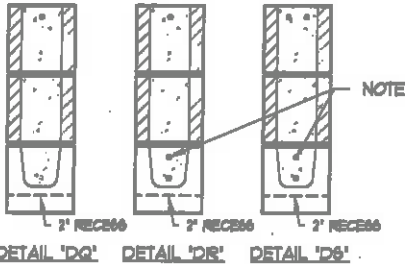
Distributors for:

Commercial Concrete Products, Inc./
 Quality Precast Co. FL 1774 - R5

GRAVITY & UPLIFT SAFE LOADS (PLF)

8" x 24" RECESS DOOR HEADERS

LINTEL LENGTH	CLEAR SPAN	DOOR SIZE	TYPE	TOP BAR	BOTTOM BARS		GRAVITY		UPLIFT	
							(0)#5L (1)#5U	(1)#5L (1)#5U	(0)#5L (1)#5U	(1)#5L (2)#5U
							DET. DQ	DET. DR	DET. DQ & DR	DET. DS
3' - 8"	2' - 4"	2' - 0"	Precast	2 - #2	2 - #2	NONE	4548*	6188*	6217*	6217*
4' - 0"	2' - 8"	2' - 4"	Precast	2 - #2	2 - #2	NONE	3744	6650*	6650*	6650*
4' - 2"	2' - 10"	2' - 6"	Precast	(2) D4.5 Wire	2 - #3	NONE	6250*	6250*	6250*	6250*
4' - 4"	3' - 0"	2' - 8"	Precast	2 - #2	2 - #2	NONE	3132	5915*	5817	5915*
4' - 6"	3' - 2"	2' - 10"	Precast	2 - #2	2 - #2	NONE	2880	9783	5361	10000
4' - 8"	3' - 4"	3' - 0"	Precast	(2) D4.5 Wire	2 - #3	NONE	5066	10000	6379	10000
5' - 8"	4' - 4"	4' - 0"	Precast	2 - #2	2 - #3	NONE	3087	7517	3272	6749
5' - 10"	4' - 6"	4' - 2"	Precast	2 - #2	2 - #3	NONE	2946	6886	3077	6225
6' - 8"	5' - 4"	5' - 0"	Precast	2 - #2	2 - #4	NONE	3798	5098	2320	4485
7' - 0"	5' - 8"	5' - 4"	Precast	2 - #2	2 - #4	NONE	4505	4538	2094	4034
7' - 6"	6' - 2"	5' - 10"	Precast	2 - #2	2 - #4	NONE	3869	3896	1812	3505
7' - 8"	6' - 4"	6' - 0"	Precast	(2) D4.5 Wire	2 - #4	NONE	2715	4882	1856	4178
9' - 8"	8' - 4"	8' - 0"	Precast	2 - #2	2 - #4	NONE	1563	2400	1054	2235



* LINTEL MEETS DEEP BEAM CRITERIA

NOTE #1: (1) #4 MIN. REQUIRED FOR DEEP BEAM ONLY

FOR 8" WIDE x 6" HIGH LINTELS, USE THE SAME TABLE LOAD VALUES ABOVE.

P.O. BOX 3400
 Apollo Beach,
 Florida 33572 Phone:
 813.645.0166
 Fax: 813.645.9698
 www.danscoengineering.com
 CA 25948

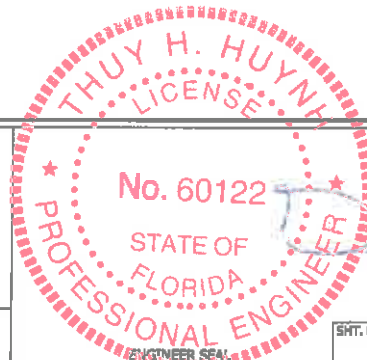


© 2012 THESE DRAWINGS AND DESIGNS ARE THE JOINT PROPERTY OF DANSKO ENGINEERING, LLC AND THE CLIENT ON THIS PROJECT. ANY REPRODUCTION OR UNAUTHORIZED USE IS PROHIBITED.

**GRAVITY & UPLIFT SAFE LOADS
 8"x24" RECESS DOOR HEADER**

JOB NO.: 371068

SAMUEL A. GREENBERG, P.E. #34245
 THUY H. HUYNH, P.E. #60122



JAN 02 2018

SHT. NO. SK14 of 23



QUALITY PRECAST COMPANY

"STRONG" ON SERVICE
 P.O. Box 11 - Brandon, Florida 33508-0011
 www.qualityprecast.com
 (800) 752-1730

Pro-Crete Materials Corporation /
 Quality Precast Co. FL 23832

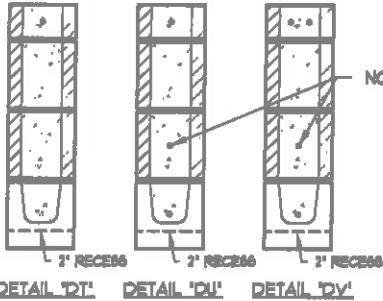
Distributors for:

Commercial Concrete Products, Inc./
 Quality Precast Co. FL 1774 - R6

GRAVITY & UPLIFT SAFE LOADS (PLF)

8" x 28" RECESS DOOR HEADERS

LINTEL LENGTH	CLEAR SPAN	DOOR SIZE	TYPE	TOP BAR	BOTTOM BARS		GRAVITY		UPLIFT	
							(0)#5L (1)#5U	(1)#5L (1)#5U	(0)#5L (1)#5U	(1)#5L (1)#5U
							DET. DT	DET. DU	DET. DT & DU	DET. DV
3' - 8"	2' - 4"	2' - 0"	Precast	2 - #2	2 - #2	NONE	5544*	7411*	7440*	7440*
4' - 0"	2' - 8"	2' - 4"	Precast	2 - #2	2 - #2	NONE	4584*	6696*	6725*	6725*
4' - 2"	2' - 10"	2' - 6"	Precast	(2) D4.5 Wires	2 - #3	NONE	7400*	7400*	7400*	7400*
4' - 4"	3' - 0"	2' - 8"	Precast	2 - #2	2 - #2	NONE	3820*	6102*	6131*	6131*
4' - 6"	3' - 2"	2' - 10"	Precast	2 - #2	2 - #2	NONE	3513*	5833*	5862*	5862*
4' - 8"	3' - 4"	3' - 0"	Precast	(2) D4.5 Wires	2 - #3	NONE	6073*	6250*	6250*	6250*
5' - 8"	4' - 4"	4' - 0"	Precast	2 - #2	2 - #3	NONE	3716	9710	4002	9749
5' - 10"	4' - 6"	4' - 2"	Precast	2 - #2	2 - #3	NONE	3582	9125	3763	9167
6' - 8"	5' - 4"	5' - 0"	Precast	2 - #2	2 - #4	NONE	4576	7895	2838	6847
7' - 0"	5' - 8"	5' - 4"	Precast	2 - #2	2 - #4	NONE	5877	6800	2561	5985
7' - 6"	6' - 2"	5' - 10"	Precast	2 - #2	2 - #4	NONE	5072	5623	2217	5034
7' - 8"	6' - 4"	6' - 0"	Precast	(2) D4.5 Wires	2 - #4	NONE	3272	7319	2285	6226
9' - 8"	8' - 4"	8' - 0"	Precast	2 - #2	2 - #4	NONE	1886	3192	1301	2982



* LINTEL MEETS DEEP BEAM CRITERIA

NOTE #1: (1) #4 MIN. REQUIRED FOR DEEP BEAM ONLY

FOR 8" WIDE x 6" HIGH LINTELS, USE THE SAME TABLE LOAD VALUES ABOVE

P.O. BOX 3400
 Apollo Beach,
 Florida 33572 Phone:
 813.645.0164
 Fax: 813.645.9698
 www.danscoengineering.com
 CA 25948

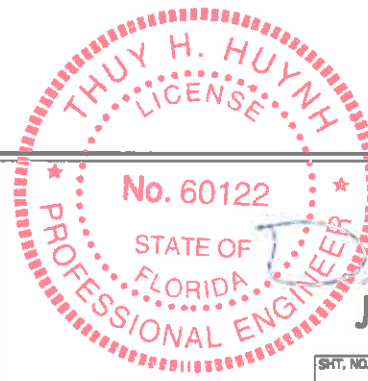


© 2017/2018 DRAWINGS AND DESIGNS ARE THE JOINT PROPERTY OF DANSOCO ENGINEERING, LLC AND THE CLIENT ON THIS PROJECT. ANY REPRODUCTION OR UNAUTHORIZED USE IS PROHIBITED.

**GRAVITY & UPLIFT SAFE LOADS
 8"X28" RECESS DOOR HEADER**

JOB NO.: 371068

SAMUEL A. GREENBERG, P.E. #34245
 THUY H. HUYNH, P.E. #60122



JAN 02 2018

ENGINEER SEAL

SHT. NO. SK15 of 23



QUALITY PRECAST COMPANY

"STRONG" ON SERVICE
 P.O. Box 11 - Brandon, Florida 33509-0011
 www.qualityprecast.com
 (800) 752-1730

Pro-Crete Materials Corporation /
 Quality Precast Co. FL 23832

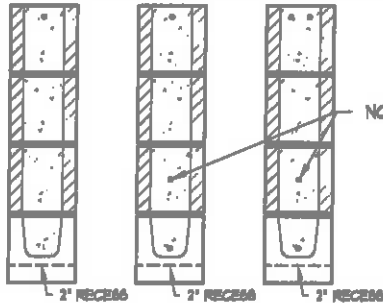
Distributors for:

Commercial Concrete Products, Inc./
 Quality Precast Co. FL 1774 - R5

GRAVITY & UPLIFT SAFE LOADS (PLF)

8" x 32" RECESS DOOR HEADERS

LINTEL LENGTH	CLEAR SPAN	DOOR SIZE	TYPE	TOP BAR	BOTTOM BARS		GRAVITY		UPLIFT	
							(0)#5L (1)#5U	(1)#5L (1)#5U	(0)#5L (1)#5U	(1)#6L (2)#5U
							DET. DW	DET. DX	DET. DW & DX	DET. DY
3' - 8"	2' - 4"	2' - 0"	Precast	2 - #2	2 - #2	NONE	6540*	8675*	8704*	8704*
4' - 0"	2' - 8"	2' - 4"	Precast	2 - #2	2 - #2	NONE	5386*	7825*	7854*	7854*
4' - 2"	2' - 10"	2' - 6"	Precast	(2) D4.5 Wire	2 - #3	NONE	8450*	8450*	8450*	8450*
4' - 4"	3' - 0"	2' - 8"	Precast	2 - #2	2 - #2	NONE	4508*	7026*	7055*	7055*
4' - 6"	3' - 2"	2' - 10"	Precast	2 - #2	2 - #2	NONE	4146*	6827*	6856*	6856*
4' - 8"	3' - 4"	3' - 0"	Precast	(2) D4.5 Wire	2 - #3	NONE	7102*	7250*	7250*	7250*
5' - 8"	4' - 4"	4' - 0"	Precast	2 - #2	2 - #3	NONE	4336*	5500*	4733	5500*
5' - 10"	4' - 6"	4' - 2"	Precast	2 - #2	2 - #3	NONE	4218	10000	4451	10000
6' - 8"	5' - 4"	5' - 0"	Precast	2 - #2	2 - #4	NONE	5356	10000	3356	8207
7' - 0"	5' - 8"	5' - 4"	Precast	2 - #2	2 - #4	NONE	6918	9848	3029	7407
7' - 6"	6' - 2"	5' - 10"	Precast	2 - #2	2 - #4	NONE	5971	8121	2621	6409
7' - 8"	6' - 4"	6' - 0"	Precast	(2) D4.5 Wire	2 - #4	NONE	3832	10000	2715	9482
9' - 8"	8' - 4"	8' - 0"	Precast	2 - #2	2 - #4	NONE	2211	4137	1546	3779



DETAIL 'DW' DETAIL 'DX' DETAIL 'DY'

* LINTEL MEETS DEEP BEAM CRITERIA

NOTE #1: (1) #4 MIN. REQUIRED FOR DEEP BEAM ONLY

FOR 8" WIDE x 6" HIGH LINTELS, USE THE SAME TABLE LOAD VALUES ABOVE.

P.O. BOX 3400
 Apollo Beach,
 Florida 33572 Phone:
 813.645.0166
 Fax: 813.645.9698
 www.danscoengineering.com
 CA 28948

DANSO
 ENGINEERING, L.L.C.

© 2017 THESE DRAWINGS AND DESIGNS ARE THE JOINT
 PROPERTY OF DANCOS ENGINEERING, L.L.C. AND THE
 CLIENT ON THIS PROJECT. ANY REPRODUCTION OR
 UNAUTHORIZED USE IS PROHIBITED.

**GRAVITY & UPLIFT SAFE LOADS
 8"x32" RECESS DOOR HEADER**

JOB NO.: 371068

SAMUEL A. GREENBERG, P.E. #34245
 THUY H. HUYNH, P.E. #60122

THUY H. HUYNH
 LICENSE #60122
 STATE OF FLORIDA
 PROFESSIONAL ENGINEER
 No. 60122
 JAN 02 2018
 ENGINEER SEAL

SHT. NO. SK16 of 23



QUALITY PRECAST COMPANY

"STRONG" ON SERVICE
P.O. Box 11 - Brandon, Florida 33508-0011
www.qualityprecast.com
(800) 752-1730

www.qualityprecast.com

Pro-Crete Materials Corporation /
Quality Precast Co. FL 23932

Distributors for:

Commercial Concrete Products, Inc./
Quality Precast Co. FL 1774 - R5

SAFE LATERAL LOADS (PLF) 8" x 8" RECESS DOOR HEADERS

LINTEL LENGTH	CLEAR SPAN	DOOR SIZE	TYPE	PLAIN	SOLID
				DET. DA	DET. DB
3' - 8"	2' - 4"	2' - 0"	Precast	689	1185
4' - 0"	2' - 8"	2' - 4"	Precast	570	979
4' - 4"	3' - 0"	2' - 8"	Precast	479	823
4' - 6"	3' - 2"	2' - 10"	Precast	441	758
5' - 8"	4' - 4"	4' - 0"	Precast	418	733
5' - 10"	4' - 8"	4' - 2"	Precast	393	689
6' - 8"	5' - 4"	5' - 0"	Precast	389	783
7' - 0"	5' - 8"	5' - 4"	Precast	386	694
7' - 6"	6' - 2"	5' - 10"	Precast	334	601
9' - 8"	8' - 4"	8' - 0"	Precast	197	354



DETAIL 'DA' DETAIL 'DB'

FOR 8" WIDE x 6" HIGH LINTELS, USE THE SAME TABLE LOAD VALUES ABOVE



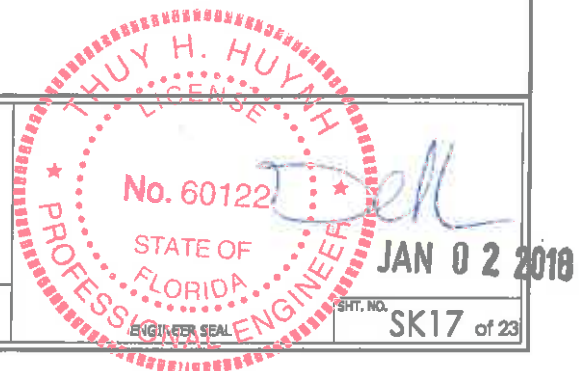
P.O. BOX 3400
Apollo Beach,
Florida 33572 Phone:
813.645.0166
Fax: 813.645.9698
www.danscoengineering.com
CA 25948

© 2017 THESE DRAWINGS AND DESIGN ARE THE JOINT PROPERTY OF DANSOCO ENGINEERING, LLC AND THE CLIENT ON THIS PROJECT. ANY REPRODUCTION OR UNAUTHORIZED USE IS PROHIBITED.

SAFE LATERAL LOADS 8"x8" RECESS DOOR HEADER

JOB NO.: 371068

SAMUEL A. GREENBERG, P.E. #34245
 THUY H. HUYNH, P.E. #60122



SHT. NO. SK17 of 23



QUALITY PRECAST COMPANY

"STRONG" ON SERVICE
P.O. Box 11 - Brandon, Florida 33508-0011
www.qualityprecast.com
(800) 752-1730

Pro-Crete Materials Corporation /
Quality Precast Co. FL 23932

Distributors for:

Commercial Concrete Products, Inc./
Quality Precast Co. FL 1774 - R5

GENERAL NOTES:

1) CODES

- 1.1 FLORIDA BUILDING CODE 6th EDITION, 2017 RESIDENTIAL SECTIONS R402.2 & R606.
- 1.2 FLORIDA BUILDING CODE, 6th EDITION, 2017 BUILDING, SECTIONS 1902.2 & 2107.
- 1.3 BUILDING CODE REQUIREMENTS FOR REINFORCED CONCRETE (ACI 318-14).
- 1.4 BUILDING CODE REQUIREMENTS AND SPECIFICATION FOR MASONRY STRUCTURES (ACI 530-13 & ACI 530.1-13)
- 1.5 AMERICAN SOCIETY OF CIVIL ENGINEERS MINIMUM DESIGN LOADS FOR BUILDINGS AND OTHER STRUCTURES (ASCE 7-10).

2) CONCRETE:

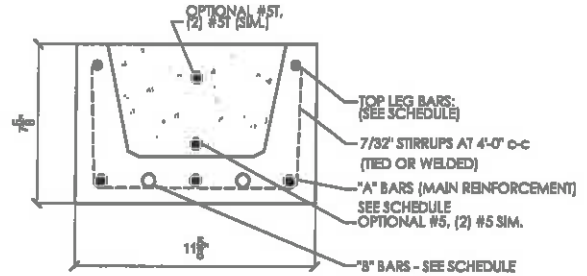
- 2.1 CONCRETE COMPRESSIVE STRENGTH AT 28 DAYS:
 - 2.1.1 PRE-CAST W/STANDARD REINFORCEMENT-4000 PSI MIN.
 - 2.1.2 GROUT PER ASTM C416 - 3000 PSI W/ MAX. 3/8" AGGREGATE, 8" TO 11" SLUMP.
- 2.2 REINFORCING BARS:
 - 2.2.1 STEEL PLACED IN PRECAST LINTEL AT TIME OF FABRICATION ASTM A615 (GRADE 60)
 - 2.2.2 STEEL IN LINTEL AND KNOCKOUT BLOCK (PLACED IN FIELD) ASTM A615 (GRADE 40).
- 2.3 DETAIL REINFORCEMENT IN ACCORDANCE WITH ACI 318.
- 2.4 CONCRETING OPERATIONS SHALL COMPLY WITH ACI STANDARDS.
- 2.5 D43 WIRE PER ASTM A436

3) MASONRY:

- 3.1 CONCRETE MASONRY UNITS (CMU) SHALL CONFORM TO ASTM C-90, NORMAL WEIGHT WITH MINIMUM NET AREA COMPRESSIVE STRENGTH 2000PSI.
- 3.2 MORTAR SHALL CONFORM TO ASTM C-270 TYPE 'M' OR 'S'
- 3.3 FULL MORTAR JOINTS ARE REQUIRED
- 3.4 MINIMUM AGGREGATE 28-DAY COMPRESSIVE STRENGTH OF CMU AND MORTAR SHALL NOT BE LESS THAN FM = 2000 PSI. MASONRY STRENGTH SHALL BE ESTABLISHED BY THE 'UNIT STRENGTH METHOD' OR, ALTERNATIVELY, BY THE 'PRISM TEST METHOD' WHERE URM REQUIREMENTS HAVE NOT BEEN MET.

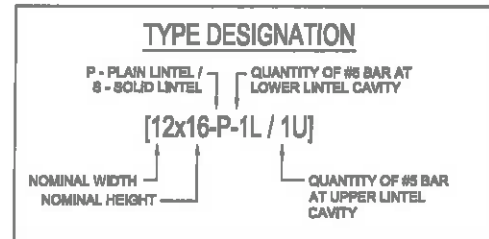
4) STRUCTURAL:

- 4.1 SAFE LOAD VALUES ARE BASED ON LINTELS HAVING A BEARING OF 8" (WITH A MINIMUM ACCEPTABLE BEARING OF 4" PER FLORIDA BUILDING CODE 6TH EDITION, 2017 RESIDENTIAL, SECTION R606.6.3 OR FLORIDA BUILDING CODE 6TH EDITION, 2017 BUILDING, SECTION 2104).
- 4.2 SAFE LOAD VALUES BASED ON RATIONAL DESIGN ANALYSIS PER ACI 318 AND ACI 530
- 4.3 DESIGNER MAY EVALUATE CONCENTRATED LOADS FROM THE SAFE LOAD TABLES BY CALCULATING MAXIMUM RESISTING MOMENT AND SHEAR AT *d* DISTANCE AWAY FROM THE FACE OF THE SUPPORT.
- 4.4 FOR LINTEL LENGTH AT 6'-6" OR GREATER, VERTICAL CELL FILLED SOLID WITH GROUT AND MINIMUM ONE (1) #5 VERTICAL REBAR IS REQUIRED AT EACH END OF THE LINTEL.
- 4.5 LINTELS THAT ARE GREATER THAN 14'-0" CLEAR SPAN MUST BE PROVIDED TEMPORARY SUPPORT, NOT BE REMOVED UNTIL 2 DAYS AFTER GROUT PLACEMENT.



- NOTES:
1. 7/32" STIRRUPS FOR COMMERCIAL CONCRETE LINTELS ONLY
 2. MIN. BEARING REQUIRED AT EA. END - 4"
 3. STANDARD FOR REINF. STEEL - ASTM A615

TYPICAL 12-INCH LINTEL PRECAST CONCRETE



P.O. BOX 3400
Apollo Beach,
Florida 33572 Phone:
813.645.0166
Fax: 813.645.9698
www.danskoengineering.com
CA 28946

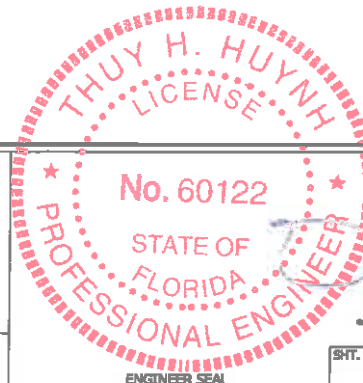
GENERAL NOTES & DETAILS 12" LINTEL

© 2017 THESE DRAWINGS AND DESIGNS ARE THE JOINT PROPERTY OF DANSKO ENGINEERING, L.L.C. AND THE CLIENT ON THIS PROJECT. ANY REPRODUCTION OR UNAUTHORIZED USE IS PROHIBITED.

JOB NO.: 371068

SAMUEL A. GREENBERG, P.E. #34245

THUY H. HUYNH, P.E. #61222



JAN 02 2018

SHT. NO. SK18 of 23



QUALITY PRECAST COMPANY

"STRONG" ON SERVICE
 P.O. Box 11 - Brandon, Florida 33509-0011
 www.qualityprecast.com
 (800) 752-1730

www.qualityprecast.com

Pro-Crete Materials Corporation /
 Quality Precast Co. FL 23832

Distributors for:

Commercial Concrete Products, Inc./
 Quality Precast Co. FL 1774 - R5

GRAVITY & UPLIFT SAFE LOADS (PLF)
12" x 8" LINTELS

LINTEL LENGTH	CLEAR SPAN	TYPE	TOP BAR	BOTTOM BARS		GRAVITY			UPLIFT	
						PLAIN	(0)#5L (1)#5U	(2)#5L (1)#5U	(0)#5L (1)#5U	(1)#5L (1)#5U
							(1)#5L (1)#5U		(1)#5L (1)#5U	(1)#5L (2)#5U
DET. A	DET. B & C	DET. CC	DET. B & C	DET. D						
2' - 10"	1' - 6"	Precast	2 - #2	2 - #5	NONE	3615	10000	6013	9947	4043
3' - 6"	2' - 2"	Precast	2 - #2	2 - #5	NONE	2311	6826	3935	5792	2790
4' - 0"	2' - 8"	Precast	2 - #2	2 - #5	NONE	1816	4878	3119	4169	2264
4' - 6"	3' - 2"	Precast	2 - #2	2 - #5	NONE	1494	3789	2580	3138	1904
5' - 4"	4' - 0"	Precast	2 - #2	2 - #5	NONE	1150	2755	1998	2098	1506
5' - 10"	4' - 6"	Precast	2 - #2	2 - #5	NONE	1010	2364	1758	1701	1338
6' - 6"	5' - 2"	Precast	2 - #2	2 - #5	NONE	867	-	1513	-	1165
7' - 6"	6' - 2"	Precast	2 - #2	2 - #5	NONE	714	1658	1249	947	935
8' - 4"	7' - 0"	Precast	(2) D4.5 W/ra	3 - #3	NONE	757	1422	-	741	1500
9' - 4"	8' - 0"	Precast	2 - #3	2 - #5	NONE	537	1213	940	567	768
10' - 6"	9' - 2"	Precast	2 - #3	2 - #5	NONE	462	1032	810	427	602
11' - 4"	10' - 0"	Precast	2 - #3	2 - #5	NONE	420	940	736	354	514
12' - 0"	10' - 8"	Precast	2 - #3	2 - #5	NONE	391	-	685	-	457
12' - 6"	11' - 2"	Precast	2 - #3	3 - #5	2 - #3	436	826	-	276	595
13' - 4"	12' - 0"	Precast	2 - #3	2 - #5	NONE	343	759	601	234	368
14' - 0"	12' - 8"	Precast	2 - #3	2 - #5	NONE	323	713	566	206	333
14' - 8"	13' - 4"	Precast	2 - #3	3 - #5	2 - #3	354	672	-	181	409
15' - 4"	14' - 0"	Precast	2 - #3	3 - #5	2 - #3	334	634	-	160	367
17' - 4"	16' - 0"	Precast	2 - #3	3 - #5	2 - #3	280	421	-	110	271



DETAIL 'A'



DETAIL 'B'



DETAIL 'C'



DETAIL 'CC'



DETAIL 'D'



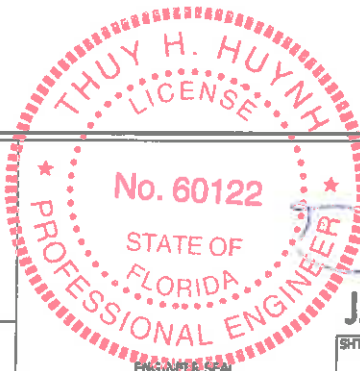
P.O. BOX 3400
 Apollo Beach,
 Florida 33572 Phone:
 813.645.0166
 Fax: 813.645.9698
 www.danskoengineering.com
 CA 25948

GRAVITY & UPLIFT SAFE LOADS
12"x8" LINTEL

© 2017-2022 DRAWINGS AND DESIGNS ARE THE JOINT
 PROPERTY OF DANSCO ENGINEERING, L.L.C. AND THE
 CLIENT ON THIS PROJECT. ANY REPRODUCTION OR
 UNAUTHORIZED USE IS PROHIBITED.

JOB NO.: 371068

SAMUEL A. GREENBERG, P.E. #34245
 THUY H. HUYNH, P.E. #60122



JAN 02 2016
 SHEET NO. SK19 of 23



QUALITY PRECAST COMPANY

"STRONG" ON SERVICE
 P.O. Box 11 - Brandon, Florida 33509-0011
 www.qualityprecast.com
 (800) 752-1730

qualityprecast.com

Pro-Crete Materials Corporation /
 Quality Precast Co. FL 23932

Distributors for:

Commercial Concrete Products, Inc./
 Quality Precast Co. FL 1774 - R5

**GRAVITY & UPLIFT SAFE LOADS (PLF)
 12" x 16" LINTELS**

LINTEL LENGTH	CLEAR SPAN	TYPE	TOP BAR	BOTTOM BARS		GRAVITY			UPLIFT	
						(0)#5L (1)#5U	(1)#5L (1)#5U	(2)#5L (1)#5U	(0)#5L (1)#5U	(1)#5L (2)#5U
						DET. H	DET. J	DET. JJ	DET. H & J	DET. K
2' - 10"	1' - 6"	Precast	2 - #2	2 - #5	NONE	10000*	10000*	8585*	10000*	9013*
3' - 6"	2' - 2"	Precast	2 - #2	2 - #5	NONE	10000*	10000*	10000	10000*	10000
4' - 0"	2' - 8"	Precast	2 - #2	2 - #5	NONE	10000	10000	10000	10000	10000
4' - 6"	3' - 2"	Precast	2 - #2	2 - #5	NONE	10000	10000	10000	7590	8722
5' - 4"	4' - 0"	Precast	2 - #2	2 - #5	NONE	8321	10000	7017	5087	5980
5' - 10"	4' - 6"	Precast	2 - #2	2 - #5	NONE	6769	8252	5808	4130	5014
6' - 6"	5' - 2"	Precast	2 - #2	2 - #5	NONE	-	-	4717	-	3989
7' - 6"	6' - 2"	Precast	2 - #2	2 - #5	NONE	4806	4806	3671	2317	2953
8' - 4"	7' - 0"	Precast	(2) D4.5 Wre	3 - #3	NONE	3942	3942	-	1819	3697
9' - 4"	8' - 0"	Precast	2 - #3	2 - #5	NONE	3237	3237	2597	1400	2355
10' - 6"	9' - 2"	Precast	2 - #3	2 - #5	NONE	2673	2673	2182	1064	1846
11' - 4"	10' - 0"	Precast	2 - #3	2 - #5	NONE	2382	2362	1956	888	1577
12' - 0"	10' - 8"	Precast	2 - #3	2 - #5	NONE	-	-	1805	-	1402
12' - 6"	11' - 2"	Precast	2 - #3	3 - #5	2 - #3	2058	2056	-	702	1491
13' - 4"	12' - 0"	Precast	2 - #3	2 - #5	NONE	1871	1871	1561	600	1129
14' - 0"	12' - 8"	Precast	2 - #3	2 - #5	NONE	1745	1745	1461	531	1021
14' - 8"	13' - 4"	Precast	2 - #3	3 - #5	2 - #3	1633	1633	-	472	1035
15' - 4"	14' - 0"	Precast	2 - #3	3 - #5	2 - #3	1534	1534	-	420	934
17' - 4"	16' - 0"	Precast	2 - #3	3 - #5	2 - #3	1296	1296	-	302	700



DETAIL 'H'



DETAIL 'J'



DETAIL 'JJ'



DETAIL 'K'

* LINTEL MEETS DEEP BEAM CRITERIA

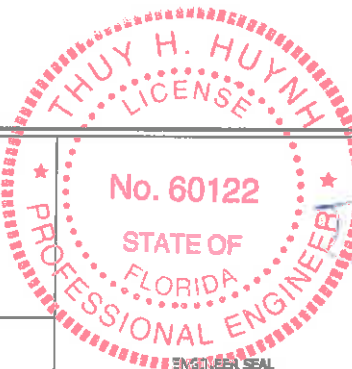


P.O. BOX 3400
 Apollo Beach,
 Florida 33572 Phone:
 813.645.0166
 Fax: 813.645.9698
 www.danscoengineering.com
 CA 25948

**GRAVITY & UPLIFT SAFE LOADS
 12"x16" LINTEL**

JOB NO.: 371068

SAMUEL A. GREENBERG, P.E. #34245
 THUY H. HUYNH, P.E. #60122



Thuy H. Huynh
 JAN 02 2018

SHT. NO. SK20 of 23

© 2015 THE DRAWINGS AND DESIGN ARE THE JOINT PROPERTY OF DANSKO ENGINEERING, LLC AND THE CLIENT ON THIS PROJECT. ANY REPRODUCTION OR UNAUTHORIZED USE IS PROHIBITED.



QUALITY PRECAST COMPANY

"STRONG" ON SERVICE
 P.O. Box 11 - Brandon, Florida 33509-0011
 www.qualityprecast.com
 (800) 752-1730

www.qualityprecast.com

Pro-Crete Materials Corporation /
 Quality Precast Co. FL 23832

Distributors for:

Commercial Concrete Products, Inc./
 Quality Precast Co. FL 1774 - R5

**GRAVITY & UPLIFT SAFE LOADS (PLF)
 12" x 24" LINTELS**

LINTEL LENGTH	CLEAR SPAN	TYPE	TOP BAR	BOTTOM BARS		GRAVITY			UPLIFT	
						(0)#5L (1)#5U	(1)#5L (1)#5U	(2)#5L (1)#5U	(0)#5L (1)#5U	(1)#5L (2)#5U
						DET. P	DET. Q	DET. QQ	DET. P & Q	DET. R
2' - 10"	1' - 6"	Precast	2 - #2	2 - #5	NONE	10000*	10000*	10000*	10000*	10000*
3' - 6"	2' - 2"	Precast	2 - #2	2 - #5	NONE	10000*	10000*	10000*	10000*	10000*
4' - 0"	2' - 8"	Precast	2 - #2	2 - #5	NONE	10000*	10000*	8556*	10000*	9004*
4' - 6"	3' - 2"	Precast	2 - #2	2 - #5	NONE	9730*	9730*	10000	9730*	9730*
5' - 4"	4' - 0"	Precast	2 - #2	2 - #5	NONE	10000	10000	10000	8084	6845
5' - 10"	4' - 6"	Precast	2 - #2	2 - #5	NONE	10000	10000	10000	6569	5657
6' - 6"	5' - 2"	Precast	2 - #2	2 - #5	NONE	-	-	10000	-	4500
7' - 6"	6' - 2"	Precast	2 - #2	2 - #5	NONE	10000	10000	7620	3494	3332
8' - 4"	7' - 0"	Precast	(2) D4.5 Wre	3 - #3	NONE	7974	7974	-	2905	5903
9' - 4"	8' - 0"	Precast	2 - #3	2 - #5	NONE	6131	6131	4835	2242	2642
10' - 6"	9' - 2"	Precast	2 - #3	2 - #5	NONE	4817	4817	3909	1709	2071
11' - 4"	10' - 0"	Precast	2 - #3	2 - #5	NONE	4184	4184	3433	1431	1769
12' - 0"	10' - 8"	Precast	2 - #3	2 - #5	NONE	-	-	3126	-	1572
12' - 6"	11' - 2"	Precast	2 - #3	3 - #5	2 - #3	3516	3516	-	1136	2394
13' - 4"	12' - 0"	Precast	2 - #3	2 - #5	NONE	3153	3153	2647	973	1266
14' - 0"	12' - 8"	Precast	2 - #3	2 - #5	NONE	2911	2911	2458	864	1146
14' - 6"	13' - 4"	Precast	2 - #3	3 - #5	2 - #3	2701	2701	-	770	1670
15' - 4"	14' - 0"	Precast	2 - #3	3 - #5	2 - #3	2519	2519	-	689	1508
17' - 4"	16' - 0"	Precast	2 - #3	3 - #5	2 - #3	2090	2090	-	501	1136



* LINTEL MEETS DEEP BEAM CRITERIA
 NOTE #1: (1) #4 MIN. REQUIRED FOR DEEP BEAM ONLY

DANSKO ENGINEERING, LLC
 P.O. BOX 3400
 Apollo Beach, Florida 33572
 Phone: 813.645.0166
 Fax: 813.645.9698
 www.danskoengineering.com
 CA 25948

© 2017 THESE DRAWINGS AND DESIGN ARE THE JOINT PROPERTY OF DANSKO ENGINEERING, LLC AND THE CLIENT ON THIS PROJECT. ANY REPRODUCTION OR UNAUTHORIZED USE IS PROHIBITED.

**GRAVITY & UPLIFT SAFE LOADS
 12"x24" LINTEL**

JOB NO.: 371068

SAMUEL A. GREENBERG, P.E. #34245
 THUY H. HUYNH, P.E. #60122

**THUY H. HUYNH
 LICENSE
 No. 60122
 STATE OF FLORIDA
 PROFESSIONAL ENGINEER**

THUY H. HUYNH

JAN 02 2018

ENGINEER SEAL

SHT. NO. **SK21** of 23



QUALITY PRECAST COMPANY

"STRONG" ON SERVICE
 P.O. Box 11 - Brandon, Florida 33509-0011
 www.qualityprecast.com
 (800) 752-1730

ecast.com

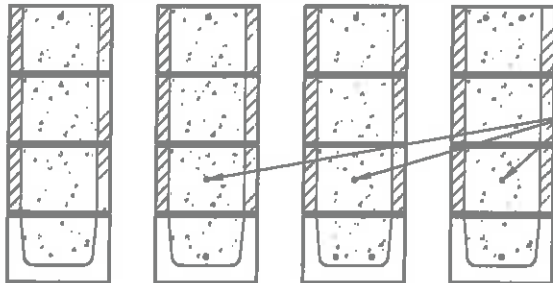
Pro-Crete Materials Corporation /
 Quality Precast Co. FL 23932

Distributors for:

Commercial Concrete Products, Inc./
 Quality Precast Co. FL 1774 - R5

**GRAVITY & UPLIFT SAFE LOADS (PLF)
 12" x 32" LINTELS**

LINTEL LENGTH	CLEAR SPAN	TYPE	TOP BAR	BOTTOM BARS		GRAVITY			UPLIFT	
						(0)#5L (1)#5U	(1)#5L (1)#5U	(2)#5L (1)#5U	(0)#5L (1)#5U (1)#5L (1)#5U	(1)#5L (2)#5U
						A	B	DET. V	DET. W	DET. WW
2' - 10"	1' - 6"	Precast	2 - #2	2 - #5	NONE	10000*	10000*	10000*	10000*	10000*
3' - 6"	2' - 2"	Precast	2 - #2	2 - #5	NONE	10000*	10000*	10000*	10000*	10000*
4' - 0"	2' - 8"	Precast	2 - #2	2 - #5	NONE	10000*	10000*	10000*	10000*	10000*
4' - 6"	3' - 2"	Precast	2 - #2	2 - #5	NONE	10000*	10000*	10000*	10000*	10000*
5' - 4"	4' - 0"	Precast	2 - #2	2 - #5	NONE	9715*	9715*	8410*	9715*	8788*
5' - 10"	4' - 6"	Precast	2 - #2	2 - #5	NONE	8550*	8550*	10000	8550*	7960
6' - 6"	5' - 2"	Precast	2 - #2	2 - #5	NONE	-	-	10000	-	6332
7' - 6"	6' - 2"	Precast	2 - #2	2 - #5	NONE	10000	10000	9492	5072	4688
8' - 4"	7' - 0"	Precast	(2) D4.5 Wire	3 - #3	NONE	10000	10000	-	3992	8114
9' - 4"	8' - 0"	Precast	2 - #3	2 - #5	NONE	10000	10000	5949	3084	3710
10' - 6"	9' - 2"	Precast	2 - #3	2 - #5	NONE	8293	8293	4621	2355	2907
11' - 4"	10' - 0"	Precast	2 - #3	2 - #5	NONE	6918	6918	3919	1974	2483
12' - 0"	10' - 8"	Precast	2 - #3	2 - #5	NONE	-	-	3463	-	2208
12' - 6"	11' - 2"	Precast	2 - #3	3 - #5	2 - #3	5590	5590	-	1569	3300
13' - 4"	12' - 0"	Precast	2 - #3	2 - #5	NONE	4909	4909	2752	1347	1778
14' - 0"	12' - 8"	Precast	2 - #3	2 - #5	NONE	4470	4470	2472	1198	1609
14' - 8"	13' - 4"	Precast	2 - #3	3 - #5	2 - #3	4100	4100	-	1069	2305
15' - 4"	14' - 0"	Precast	2 - #3	3 - #5	2 - #3	3786	3786	-	958	2084
17' - 4"	16' - 0"	Precast	2 - #3	3 - #5	2 - #3	3069	3069	-	700	1573

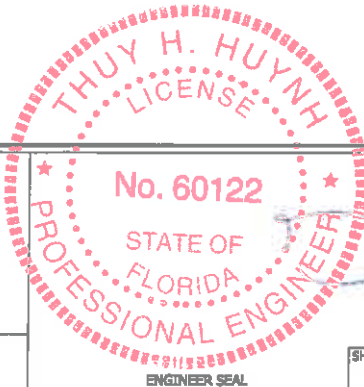


DETAIL 'V' DETAIL 'W' DETAIL 'WW' DETAIL 'X'

* LINTEL MEETS DEEP BEAM CRITERIA

NOTE #1: (1) #4 MIN. REQUIRED FOR DEEP BEAM ONLY

NOTE #1



JAN 02 2018

P.O. BOX 3400
 Apollo Beach,
 Florida 33572 Phone:
 813.645.0166
 Fax: 813.645.9698
 www.danscoengineering.com
 CA 23948

DANSKO ENGINEERING, LLC

**GRAVITY & UPLIFT SAFE LOADS
 12"x32" LINTEL**

JOB NO.: 371068

SAMUEL A. GREENBERG, P.E. #34245
 THUY H. HUYNH, P.E. #60122

ENGINEER SEAL

SHT. NO. SK22 of 23

© 2017 THESE DRAWINGS AND DESIGN ARE THE JOINT PROPERTY OF DANSKO ENGINEERING, LLC AND THE CLIENT ON THIS PROJECT. ANY REPRODUCTION OR UNAUTHORIZED USE IS PROHIBITED.



QUALITY PRECAST COMPANY

"STRONG" ON SERVICE
P.O. Box 11 - Brandon, Florida 33509-0011
www.qualityprecast.com
(800) 752-1730

www.qualityprecast.com

Pro-Crete Materials Corporation /
Quality Precast Co. FL 23932

Distributors for:

Commercial Concrete Products, Inc./
Quality Precast Co. FL 1774 - R5

SAFE LATERAL LOADS (PLF) 12" x 8" LINTELS

LENGTH	TYPE	PLAIN	SOLID
		DET. A	DET. B
2' - 10"	Precast	2396	6471
3' - 6"	Precast	1660	6471
4' - 0"	Precast	1349	4665
4' - 6"	Precast	1136	3648
5' - 4"	Precast	900	2675
5' - 10"	Precast	800	2306
6' - 6"	Precast	697	1857
7' - 6"	Precast	556	1375
9' - 4"	Precast	404	1012
10' - 6"	Precast	317	793
11' - 4"	Precast	270	677
12' - 0"	Precast	240	602
13' - 4"	Precast	194	485
14' - 0"	Precast	175	439



DETAIL 'A'



DETAIL 'B'

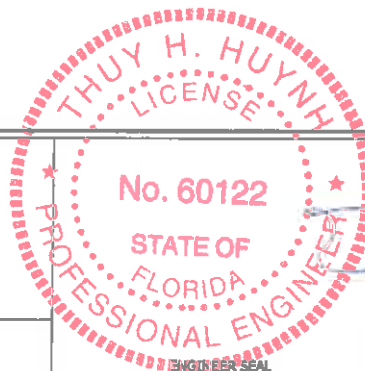


P.O. BOX 3400
Apollo Beach,
Florida 33572 Phone:
813.645.0166
Fax: 813.645.9698
www.danscoengineering.com
CA 25948

SAFE LATERAL LOADS 12"x8" LINTEL

JOB NO.: 371068

SAMUEL A. GREENBERG, P.E. #34245
 THUY H. HUYNH, P.E. #60122



JAN 02 2018

SHT. NO. SK23 of 23

© 2017 THESE DRAWINGS AND DESIGNS ARE THE JOINT
PROPERTY OF DANSOCO ENGINEERING, LLC AND THE
CLIENT ON THIS PROJECT. ANY REPRODUCTION OR
UNAUTHORIZED USE IS PROHIBITED.