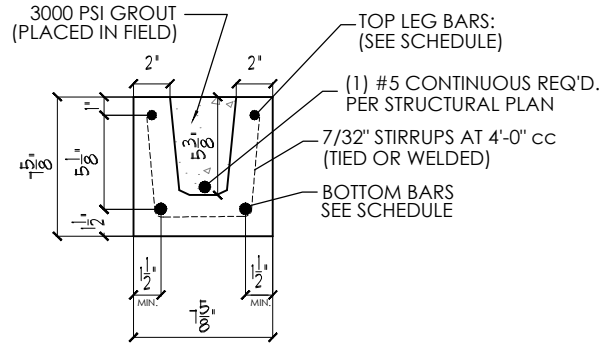


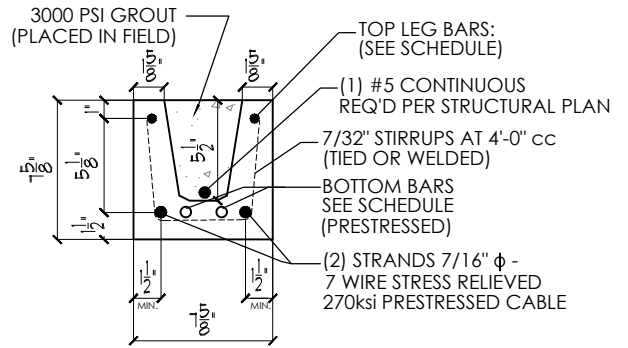
GENERAL NOTES:

- 1.) CODES
 - 1.1 FLORIDA BUILDING CODE 8th EDITION, 2023 RESIDENTIAL SECTIONS R402.2 & R606.
 - 1.2 FLORIDA BUILDING CODE, 8th EDITION, 2023 BUILDING SECTIONS 1901.2 & 2107.
 - 1.3 BUILDING CODE REQUIREMENTS FOR REINFORCED CONCRETE (ACI 318-19).
 - 1.4 BUILDING CODE REQUIREMENTS FOR MASONRY STRUCTURES (TMS 402-16).
 - 1.5 SPECIFICATIONS REQUIREMENTS FOR MASONRY STRUCTURES (TMS 602-16).
 - 1.6 AMERICAN SOCIETY OF CIVIL ENGINEERS MINIMUM DESIGN LOADS FOR BUILDINGS AND OTHER STRUCTURES (ASCE 7-22).
- 2.) CONCRETE:
 - 2.1 CONCRETE COMPRESSIVE STRENGTH AT 28 DAYS:
 - 2.1.1 PRE-CAST WITH STANDARD REINFORCEMENT - 5,000PSI
 - 2.1.2 PRE-CAST WITH PRESTRESS REINFORCEMENT - 6,000PSI
 - 2.1.3 GROUT PER ASTM C416 f'c=3,000PSI WITH MAXIMUM 3/8" AGGREGATE AND 8' TO 11' SLUMP.
 - 2.2 REINFORCING BARS:
 - 2.2.1 STEEL PLACED IN PRE-CAST LINTEL AT TIME OF FABRICATION ASTM A615 (GRADE 60).
 - 2.2.2 STEEL IN LINTEL AND KNOCKOUT BLOCK (PLACED IN FIELD) ASTM A615 (GRADE 40).
 - 2.3 PRESTRESS STANDS ASTM A416 7-WIRE, STRESS RELIEVED 270KSI.
 - 2.4 DETAIL REINFORCEMENT IN ACCORDANCE WITH ACI 315.
 - 2.5 CONCRETING OPERATIONS SHALL COMPLY WITH ACI STANDARDS.
 - 2.6 D45 WIRE PER ASTM A1064.
- 3.) MASONRY:
 - 3.1 CONCRETE MASONRY UNITS (CMU) SHALL CONFORM TO ASTM C-90, NORMAL WEIGHT WITH MINIMUM NET AREA COMPRESSIVE STRENGTH 2,000PSI.
 - 3.2 MORTAR SHALL CONFORM TO ASTM C-210 TYPE 'M' OR 'S'.
 - 3.3 FULL MORTAR JOINTS ARE REQUIRED.
 - 3.4 MINIMUM AGGREGATE 28-DAY COMPRESSIVE STRENGTH OF CMU AND MORTAR SHALL NOT BE LESS THAN f'm = 2,000 PSI. MASONRY STRENGTH SHALL BE ESTABLISHED BY THE 'UNIT STRENGTH METHOD' OR, ALTERNATIVELY BY THE 'PRISM TEST METHOD' WHERE UNIT STRENGTH METHOD REQUIREMENTS HAVE NOT BEEN MET.
- 4.) STRUCTURAL:
 - 4.1 SAFE LOAD VALUES ARE BASED ON LINTELS HAVING A BEARING OF 8' (WITH A MINIMUM ACCEPTABLE BEARING OF 4' FOR FILLED LINTELS AND 6 1/2' FOR UNFILLED LINTELS IN DIRECTION OF SPAN PER TMS 402-16 SECTION 4.3.4).
 - 4.2 SAFE LOAD VALUES ARE BASED ON RATIONAL DESIGN ANALYSIS PER ACI 318 AND TMS 402.
 - 4.3 DESIGNER MAY EVALUATE CONCENTRATED LOADS FROM THE SAFE LOAD TABLES BY CALCULATING MAXIMUM RESISTING MOMENT AND SHEAR AT d DISTANCE AWAY FROM THE FACE OF THE SUPPORT.
 - 4.4 LINTELS THAT ARE GREATER THAN 14'-0" CLEAR SPAN MUST BE PROVIDED TEMPORARY SUPPORT AND NOT BE REMOVED UNTIL TWO (2) DAYS AFTER GROUT PLACEMENT.
 - 4.5 FOR LINTEL LENGTH AT 6'-6" OR GREATER, VERTICAL CELL FILLED SOLID WITH GROUT AND MINIMUM ONE (1) #5 VERTICAL REBAR IS REQUIRED AT EACH END OF THE LINTEL.
 - 4.6 FOR COMPOSITE LINTEL HEIGHTS NOT SHOWN, USE SAFE LOAD FROM NEXT LOWER HEIGHT SHOWN.
 - 4.7 ANY VARIATION OR ALTERATION OF THE INTENDED DESIGN USE OF THE LINTELS IS PROHIBITED WITHOUT PRIOR APPROVAL OF A STRUCTURAL ENGINEER.



- NOTES:
1. MINIMUM COVERAGE OF STEEL - 1.5"
 2. MIN. BEARING REQUIRED AT EA. END - 4"
 3. STANDARD FOR REINF. STEEL - ASTM A615

**TYPICAL LINTEL SECTION
PRECAST CONCRETE**



- NOTES:
1. MINIMUM COVERAGE OF STEEL - 1.5"
 2. MIN. BEARING REQUIRED AT EA. END - 4"
 3. STANDARD FOR REINF. STEEL - ASTM A615

**TYPICAL LINTEL SECTION
PRESTRESS CONCRETE**

Samuel A. Greenberg, State of Florida, Professional Engineer, License No. 34245

This item has been X[[] signed and sealed by Samuel A. Greenberg, PE on 10/20/2023 using a Digital Signature.

Printed copies of this document are not considered Signed and sealed and h\Y 'G< 5 'Ui h\Y bh\WUhc b 'Wc XY ' must be j erified on any electronic copies.

10/10/2023 7:31:36 PM, ANSI full bleed A (8.50 x 11.00 Inches)

DE DANSCO ENGINEERING, P.A.
6423 RUBIA CIRCLE
APOLLO BEACH - FLORIDA - 33512
PHONE - (813) 917 1524 FAX 813915PE@AOL.COM

GENERAL NOTES & DETAILS
8" LINTEL

QUALITY PRECAST COMPANY

P.O. Box 11
Brandon, FL 33509
www.qualityprecast.com
(813) 685-5615

SAMUEL A. GREENBERG, P.E. #34245

SHT. NO.
SK1 of 23

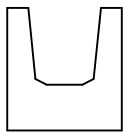


© 2023- THESE DRAWINGS AND DESIGNS ARE THE JOINT PROPERTY OF DANSCO ENGINEERING, P.A. AND THE CLIENT ON THIS PROJECT. ANY REPRODUCTION OR UNAUTHORIZED USE IS PROHIBITED.

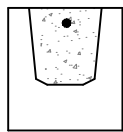
REINFORCING SCHEDULE & LOAD CAPACITIES SAFE WORKING LOADS (PLF) 8" x 8" LINTELS

LINTEL LENGTH	CLEAR SPAN	LINTEL TYPE	LINTEL STEEL TOP WIRE / BAR	LINTEL STEEL BOTTOM BAR	UNFILLED GRAVITY CAPACITY DETAIL 'A'	GRAVITY CAPACITY (0)#5L (1)#5U DETAIL 'B'	GRAVITY CAPACITY (1)#5L (1)#5U DETAIL 'C'	UPLIFT CAPACITY (0)#5L (1)#5U (1)#5L (1)#5U DETAIL 'B' & 'C'	UPLIFT CAPACITY (1)#5L (2)#5U DETAIL 'D'
2'-10"	1'-6"	PRECAST	(2) D4.5 WIRE	(2) No. 3	6740	9462	9462	10000	10000
3'-6"	2'-2"	PRECAST	(2) D4.5 WIRE	(2) No. 3	2912	5318	5318	5114	5114
4'-0"	2'-8"	PRECAST	(2) D4.5 WIRE	(2) No. 3	2038	3722	3722	3598	3598
4'-6"	3'-2"	PRECAST	(2) D4.5 WIRE	(2) No. 3	1566	2859	2859	2772	2772
4'-8"	3'-4"	PRECAST	(2) D4.5 WIRE	(2) No. 3	1453	2654	2654	2574	2574
5'-4"	4'-0"	PRECAST	(2) D4.5 WIRE	(2) No. 3	1127	2013	2013	2000	2000
5'-10"	4'-6"	PRECAST	(2) D4.5 WIRE	(2) No. 3	964	1636	1636	1712	1712
6'-6"	5'-2"	PRECAST	(2) D4.5 WIRE	(2) No. 4	796	1454	1454	1435	1435
7'-6"	6'-2"	PRECAST	(2) D4.5 WIRE	(2) No. 4	639	1167	1167	1152	1152
7'-8"	6'-4"	PRECAST	(2) D4.5 WIRE	(2) No. 4	619	1130	1130	1115	1115
8'-0"	6'-8"	PRECAST	(2) D4.5 WIRE	(2) No. 4	581	1062	1062	1048	1048
8'-4"	7'-0"	PRECAST	(2) D4.5 WIRE	(2) No. 4	548	1001	1001	979	988
9'-4"	8'-0"	PRECAST	(2) D4.5 WIRE	(2) No. 4	467	853	853	759	843
10'-6"	9'-2"	PRECAST	(2) D4.5 WIRE	(2) No. 4	398	727	727	582	718
11'-4"	10'-0"	PRECAST	(2) No. 3	(2) No. 5	355	649	649	489	649
12'-0"	10'-8"	PRECAST	(2) No. 3	(2) No. 5	329	602	602	430	602
12'-6"	11'-2"	PRECAST	(2) No. 3	(2) No. 5	312	570	570	391	570
13'-4"	12'-0"	PRECAST	(2) No. 3	(2) No. 5	287	525	525	337	525
14'-0"	12'-8"	PRECAST	(2) No. 3	(2) No. 5	270	449	449	286	451
14'-8"	13'-4"	PRESTRESSED	(2) No. 3	(2) 7/16 strand + (2) No. 4	N.R.	522	522	360	499
15'-4"	14'-0"	PRESTRESSED	(2) No. 3	(2) 7/16 strand + (2) No. 4	N.R.	473	473	328	455
17'-4"	16'-0"	PRESTRESSED	(2) No. 3	(2) 7/16 strand + (2) No. 4	N.R.	357	357	254	352
19'-4"	18'-0"	PRESTRESSED	(2) No. 3	(2) 7/16 strand + (2) No. 5	N.R.	277	277	202	281
20'-0"	18'-8"	PRESTRESSED	(2) No. 3	(2) 7/16 strand + (2) No. 5	N.R.	256	256	188	262
21'-4"	20'-0"	PRESTRESSED	(2) No. 3	(2) 7/16 strand + (2) No. 5	N.R.	219	219	165	229
22'-0"	20'-8"	PRESTRESSED	(2) No. 3	(2) 7/16 strand + (2) No. 5	N.R.	203	203	155	215
24'-0"	22'-8"	PRESTRESSED	(2) No. 3	(2) 7/16 strand + (2) No. 5	N.R.	164	164	124	179

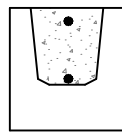
N.R. - NOT RECOMMENDED



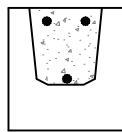
DETAIL "A"



DETAIL "B"

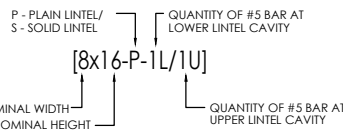


DETAIL "C"



DETAIL "D"

TYPE DESIGNATION



Samuel A. Greenberg, State of Florida, Professional Engineer,
License No. **34245**

This item has been X[[] signed and sealed by
Samuel A. Greenberg, PE on **10/20/2023** using a Digital
Signature.

Printed copies of this document are not considered Signed
and sealed and h\Y 'G< 5 'Ui h\Ybh]W]h]cb 'WcXY' must be
j erified on any electronic copies.



8" LINTEL LOAD TABLE

QUALITY PRECAST COMPANY

P.O. Box 11
Brandon, FL 33509
www.qualityprecast.com
(813) 685-5615

DE DANSCO
ENGINEERING, P.A.
6423 RUBIA CIRCLE
APOLLO BEACH - FLORIDA - 33512
PHONE - (813) 911 1524 - 681615@PE@AOL.COM

SAMUEL A. GREENBERG, P.E. #34245

SHT. NO.
SK2 of 23

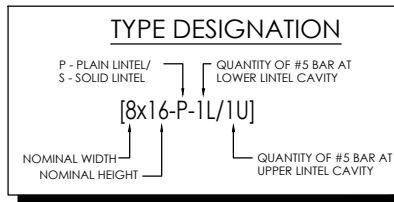
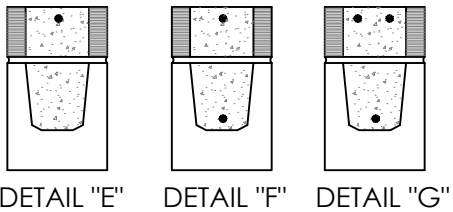
10/10/2023 7:31:37 PM, ANSI full bleed A (8.50 x 11.00 Inches)

© 2023- THESE DRAWINGS AND DESIGNS ARE THE
JOINT PROPERTY OF DANSCO ENGINEERING, P.A. AND
THE CLIENT ON THIS PROJECT. ANY REPRODUCTION OR
UNAUTHORIZED USE IS PROHIBITED.

REINFORCING SCHEDULE & LOAD CAPACITIES SAFE WORKING LOADS (PLF) 8" X 12" COMPOSITE LINTELS

LINTEL LENGTH	CLEAR SPAN	LINTEL TYPE	LINTEL STEEL TOP WIRE / BAR	LINTEL STEEL BOTTOM BAR	GRAVITY CAPACITY (0)#5L (1)#5U DETAIL 'E'	GRAVITY CAPACITY (1)#5L (1)#5U DETAIL 'F'	UPLIFT CAPACITY (0)#5L (1)#5U (1)#5L (1)#5U DETAIL 'E' & 'F'	UPLIFT CAPACITY (1)#5L (2)#5U DETAIL 'G'
2'-10"	1'-6"	PRECAST	(2) D4.5 WIRE	(2) No. 3	10000*	10000*	10000*	10000*
3'-6"	2'-2"	PRECAST	(2) D4.5 WIRE	(2) No. 3	9383	10000	10000	10000
4'-0"	2'-8"	PRECAST	(2) D4.5 WIRE	(2) No. 3	6766	8225	9200	9445
4'-6"	3'-2"	PRECAST	(2) D4.5 WIRE	(2) No. 3	5104	5671	6345	6345
4'-8"	3'-4"	PRECAST	(2) D4.5 WIRE	(2) No. 3	4683	5137	5717	5717
5'-4"	4'-0"	PRECAST	(2) D4.5 WIRE	(2) No. 3	3428	3727	4091	4091
5'-10"	4'-6"	PRECAST	(2) D4.5 WIRE	(2) No. 3	2787	3088	3369	3369
6'-6"	5'-2"	PRECAST	(2) D4.5 WIRE	(2) No. 4	2560	2560	2723	2723
7'-6"	6'-2"	PRECAST	(2) D4.5 WIRE	(2) No. 4	1992	1992	2112	2112
7'-8"	6'-4"	PRECAST	(2) D4.5 WIRE	(2) No. 4	1921	1921	2035	2035
8'-0"	6'-8"	PRECAST	(2) D4.5 WIRE	(2) No. 4	1792	1792	1862	1897
8'-4"	7'-0"	PRECAST	(2) D4.5 WIRE	(2) No. 4	1679	1679	1699	1776
9'-4"	8'-0"	PRECAST	(2) D4.5 WIRE	(2) No. 4	1411	1411	1319	1489
10'-6"	9'-2"	PRECAST	(2) D4.5 WIRE	(2) No. 4	1186	1186	1014	1251
11'-4"	10'-0"	PRECAST	(2) No. 3	(2) No. 5	1074	1074	854	1121
12'-0"	10'-8"	PRECAST	(2) No. 3	(2) No. 5	992	992	751	1035
12'-6"	11'-2"	PRECAST	(2) No. 3	(2) No. 5	937	937	685	978
13'-4"	12'-0"	PRECAST	(2) No. 3	(2) No. 5	859	859	591	896
14'-0"	12'-8"	PRECAST	(2) No. 3	(2) No. 5	804	804	529	838
14'-8"	13'-4"	PRESTRESSED	(2) No. 3	(2) 7/16 strand + (2) No. 4	1207	1207	605	938
15'-4"	14'-0"	PRESTRESSED	(2) No. 3	(2) 7/16 strand + (2) No. 4	1095	1095	551	887
17'-4"	16'-0"	PRESTRESSED	(2) No. 3	(2) 7/16 strand + (2) No. 4	836	836	426	763
19'-4"	18'-0"	PRESTRESSED	(2) No. 3	(2) 7/16 strand + (2) No. 5	655	655	340	645
20'-0"	18'-8"	PRESTRESSED	(2) No. 3	(2) 7/16 strand + (2) No. 5	607	607	317	601
21'-4"	20'-0"	PRESTRESSED	(2) No. 3	(2) 7/16 strand + (2) No. 5	524	524	277	526
22'-0"	20'-8"	PRESTRESSED	(2) No. 3	(2) 7/16 strand + (2) No. 5	488	488	260	493
24'-0"	22'-8"	PRESTRESSED	(2) No. 3	(2) 7/16 strand + (2) No. 5	399	399	217	412

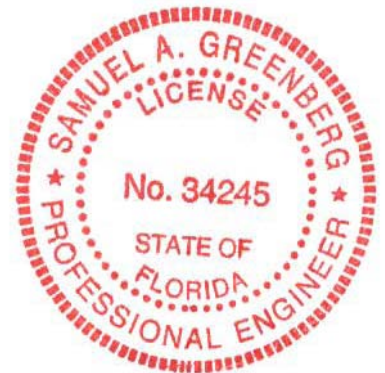
* LINTEL MEETS DEEP BEAM CRITERIA



Samuel A. Greenberg, State of Florida, Professional Engineer,
License No. 34245

This item has been X[[]U`msigned and sealed by
Samuel A. Greenberg, PE on 10/20/2023 using a Digital
Signature.

Printed copies of this document are not considered Signed
and sealed and h`Y`G<5`Ui h`Y`b`WU`h`c`b`Wc`XY` must be
j`erified on any electronic copies.



10/10/2023 7:31:38 PM, ANSI full bleed A (8.50 x 11.00 inches)

DE DANSCO
ENGINEERING, P.A.
6423 RUBIA CIRCLE
APOLLO BEACH - FLORIDA - 33512
PHONE - (813) 911 1524 8AM@DANSCO.COM

8" LINTEL LOAD TABLE

QUALITY PRECAST COMPANY

P.O. Box 11
Brandon, FL 33509
www.qualityprecast.com
(813) 685-5615

SAMUEL A. GREENBERG, P.E. #34245

SHT. NO.

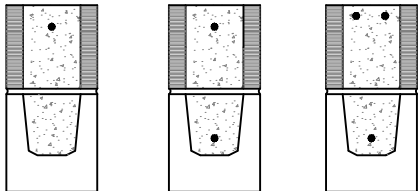
SK3 of 23

© 2023- THESE DRAWINGS AND DESIGNS ARE THE
JOINT PROPERTY OF DANSCO ENGINEERING, P.A. AND
THE CLIENT ON THIS PROJECT. ANY REPRODUCTION OR
UNAUTHORIZED USE IS PROHIBITED.

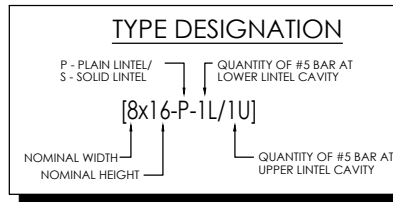
REINFORCING SCHEDULE & LOAD CAPACITIES SAFE WORKING LOADS (PLF) 8" X 16" COMPOSITE LINTELS

LINTEL LENGTH	CLEAR SPAN	LINTEL TYPE	LINTEL STEEL TOP WIRE / BAR	LINTEL STEEL BOTTOM BAR	GRAVITY CAPACITY (0)#5L (1)#5U DETAIL 'H'	GRAVITY CAPACITY (1)#5L (1)#5U DETAIL 'J'	UPLIFT CAPACITY (0)#5L (1)#5U (1)#5L (1)#5U DETAIL 'H' & 'J'	UPLIFT CAPACITY (1)#5L (2)#5U DETAIL 'K'
2'-10"	1'-6"	PRECAST	(2) D4.5 WIRE	(2) No. 3	10000*	10000*	10000*	10000*
3'-6"	2'-2"	PRECAST	(2) D4.5 WIRE	(2) No. 3	8164*	8164*	8164*	8164*
4'-0"	2'-8"	PRECAST	(2) D4.5 WIRE	(2) No. 3	9550	10000	10000	10000
4'-6"	3'-2"	PRECAST	(2) D4.5 WIRE	(2) No. 3	7207	10000	9863	10000
4'-8"	3'-4"	PRECAST	(2) D4.5 WIRE	(2) No. 3	6614	10000	9053	10000
5'-4"	4'-0"	PRECAST	(2) D4.5 WIRE	(2) No. 3	4843	6687	6635	7320
5'-10"	4'-6"	PRECAST	(2) D4.5 WIRE	(2) No. 3	3940	5211	5402	5641
6'-6"	5'-2"	PRECAST	(2) D4.5 WIRE	(2) No. 4	4350	4350	4225	4314
7'-6"	6'-2"	PRECAST	(2) D4.5 WIRE	(2) No. 4	3206	3206	3063	3183
7'-8"	6'-4"	PRECAST	(2) D4.5 WIRE	(2) No. 4	3071	3071	2916	3049
8'-0"	6'-8"	PRECAST	(2) D4.5 WIRE	(2) No. 4	2831	2831	2651	2811
8'-4"	7'-0"	PRECAST	(2) D4.5 WIRE	(2) No. 4	2625	2625	2421	2607
9'-4"	8'-0"	PRECAST	(2) D4.5 WIRE	(2) No. 4	2153	2153	1881	2139
10'-6"	9'-2"	PRECAST	(2) D4.5 WIRE	(2) No. 4	1777	1777	1448	1766
11'-4"	10'-0"	PRECAST	(2) No. 3	(2) No. 5	1568	1568	1222	1568
12'-0"	10'-8"	PRECAST	(2) No. 3	(2) No. 5	1439	1439	1075	1439
12'-6"	11'-2"	PRECAST	(2) No. 3	(2) No. 5	1354	1354	981	1354
13'-4"	12'-0"	PRECAST	(2) No. 3	(2) No. 5	1232	1232	849	1232
14'-0"	12'-8"	PRECAST	(2) No. 3	(2) No. 5	1149	1149	760	1149
14'-8"	13'-4"	PRESTRESSED	(2) No. 3	(2) 7/16 strand + (2) No. 4	1419	1419	850	1347
15'-4"	14'-0"	PRESTRESSED	(2) No. 3	(2) 7/16 strand + (2) No. 4	1291	1291	775	1270
17'-4"	16'-0"	PRESTRESSED	(2) No. 3	(2) 7/16 strand + (2) No. 4	993	993	600	1084
19'-4"	18'-0"	PRESTRESSED	(2) No. 3	(2) 7/16 strand + (2) No. 5	1035	1035	478	936
20'-0"	18'-8"	PRESTRESSED	(2) No. 3	(2) 7/16 strand + (2) No. 5	961	961	446	872
21'-4"	20'-0"	PRESTRESSED	(2) No. 3	(2) 7/16 strand + (2) No. 5	834	834	390	763
22'-0"	20'-8"	PRESTRESSED	(2) No. 3	(2) 7/16 strand + (2) No. 5	720	720	366	716
24'-0"	22'-8"	PRESTRESSED	(2) No. 3	(2) 7/16 strand + (2) No. 5	642	642	306	599

* LINTEL MEETS DEEP BEAM CRITERIA



DETAIL "H" DETAIL "J" DETAIL "K"



Samuel A. Greenberg, State of Florida, Professional Engineer,
License No. **34245**

This item has been X[] signed and sealed by
Samuel A. Greenberg, PE on **10/20/2023** using a Digital
Signature.

Printed copies of this document are not considered Signed
and sealed and ANY COPY MUST BE VERIFIED ON ANY ELECTRONIC COPIES.

DE DANSCO
ENGINEERING, P.A.
6423 RUBIA CIRCLE
APOLLO BEACH - FLORIDA - 33512
PHONE - (813) 917 1524 8AM@DANSCO.COM

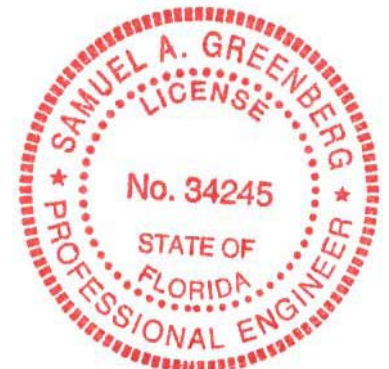
8" LINTEL LOAD TABLE

QUALITY PRECAST COMPANY

P.O. Box 11
Brandon, FL 33509
www.qualityprecast.com
(813) 685-5615

SAMUEL A. GREENBERG, P.E. #34245

SHT. NO.
SK4 of 23



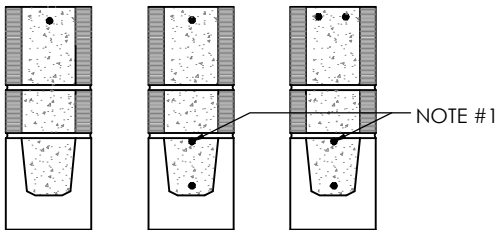
10/10/2023 7:31:38 PM, ANSI full bleed A (8.50 x 11.00 Inches)

© 2023- THESE DRAWINGS AND DESIGNS ARE THE
JOINT PROPERTY OF DANSCO ENGINEERING, P.A. AND
THE CLIENT ON THIS PROJECT. ANY REPRODUCTION OR
UNAUTHORIZED USE IS PROHIBITED.

REINFORCING SCHEDULE & LOAD CAPACITIES SAFE WORKING LOADS (PLF) 8" X 20" COMPOSITE LINTELS

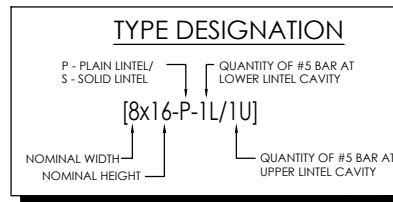
LINTEL LENGTH	CLEAR SPAN	LINTEL TYPE	LINTEL STEEL TOP WIRE / BAR	LINTEL STEEL BOTTOM BAR	GRAVITY CAPACITY (0)#5L (1)#5U DETAIL 'L'	GRAVITY CAPACITY (1)#5L (1)#5U DETAIL 'M'	UPLIFT CAPACITY (0)#5L (1)#5U (1)#5L (1)#5U DETAIL 'L' & 'M'	UPLIFT CAPACITY (1)#5L (2)#5U DETAIL 'N'
2'-10"	1'-6"	PRECAST	(2) D4.5 WIRE	(2) No. 3	10000*	10000*	10000*	10000*
3'-6"	2'-2"	PRECAST	(2) D4.5 WIRE	(2) No. 3	9588*	9588*	9588*	9588*
4'-0"	2'-8"	PRECAST	(2) D4.5 WIRE	(2) No. 3	7192*	7192*	7192*	7192*
4'-6"	3'-2"	PRECAST	(2) D4.5 WIRE	(2) No. 3	9313	10000	10000	10000
4'-8"	3'-4"	PRECAST	(2) D4.5 WIRE	(2) No. 3	8548	10000	10000	10000
5'-4"	4'-0"	PRECAST	(2) D4.5 WIRE	(2) No. 3	6261	10000	8605	10000
5'-10"	4'-6"	PRECAST	(2) D4.5 WIRE	(2) No. 3	5095	8995	7007	9811
6'-6"	5'-2"	PRECAST	(2) D4.5 WIRE	(2) No. 4	6871	6871	5482	6814
7'-6"	6'-2"	PRECAST	(2) D4.5 WIRE	(2) No. 4	4693	4693	3976	4661
7'-8"	6'-4"	PRECAST	(2) D4.5 WIRE	(2) No. 4	4456	4456	3785	4427
8'-0"	6'-8"	PRECAST	(2) D4.5 WIRE	(2) No. 4	4047	4047	3443	4021
8'-4"	7'-0"	PRECAST	(2) D4.5 WIRE	(2) No. 4	3706	3706	3144	3683
9'-4"	8'-0"	PRECAST	(2) D4.5 WIRE	(2) No. 4	2954	2954	2445	2937
10'-6"	9'-2"	PRECAST	(2) D4.5 WIRE	(2) No. 4	2384	2384	1884	2371
11'-4"	10'-0"	PRECAST	(2) No. 3	(2) No. 5	2082	2082	1590	2082
12'-0"	10'-8"	PRECAST	(2) No. 3	(2) No. 5	1895	1895	1401	1895
12'-6"	11'-2"	PRECAST	(2) No. 3	(2) No. 5	1775	1775	1279	1775
13'-4"	12'-0"	PRECAST	(2) No. 3	(2) No. 5	1605	1605	1107	1605
14'-0"	12'-8"	PRECAST	(2) No. 3	(2) No. 5	1490	1490	992	1490
14'-8"	13'-4"	PRESTRESSED	(2) No. 3	(2) 7/16 strand + (2) No. 4	1948	1948	1093	1591
15'-4"	14'-0"	PRESTRESSED	(2) No. 3	(2) 7/16 strand + (2) No. 4	1774	1774	996	1494
17'-4"	16'-0"	PRESTRESSED	(2) No. 3	(2) 7/16 strand + (2) No. 4	1368	1368	771	1264
19'-4"	18'-0"	PRESTRESSED	(2) No. 3	(2) 7/16 strand + (2) No. 5	1084	1084	615	1095
20'-0"	18'-8"	PRESTRESSED	(2) No. 3	(2) 7/16 strand + (2) No. 5	1008	1008	573	1048
21'-4"	20'-0"	PRESTRESSED	(2) No. 3	(2) 7/16 strand + (2) No. 5	877	877	501	966
22'-0"	20'-8"	PRESTRESSED	(2) No. 3	(2) 7/16 strand + (2) No. 5	850	850	471	923
24'-0"	22'-8"	PRESTRESSED	(2) No. 3	(2) 7/16 strand + (2) No. 5	740	740	393	772

* LINTEL MEETS DEEP BEAM CRITERIA



DETAIL "L" DETAIL "M" DETAIL "N"

NOTE #1: (1) #4 MIN. REQUIRED FOR DEEP BEAM ONLY



Samuel A. Greenberg, State of Florida, Professional Engineer,
License No. 34245

This item has been X[] signed and sealed by
Samuel A. Greenberg, PE on **10/20/2023** using a Digital
Signature.

Printed copies of this document are not considered Signed
and sealed and h Y 'G< 5 'Ui h Ybh\WJh'c b 'Wc XY' must be
j erified on any electronic copies.



8" LINTEL LOAD TABLE

QUALITY PRECAST COMPANY

P.O. Box 11
Brandon, FL 33509
www.qualityprecast.com
(813) 685-5615

SAMUEL A. GREENBERG, P.E. #34245

SHT. NO.

SK5 of 23

DE DANSCO
ENGINEERING, P.A.
6423 RUBIA CIRCLE
APOLLO BEACH - FLORIDA - 33512
PHONE - (813) 911 1824 8AM@DEENGINEERING.COM

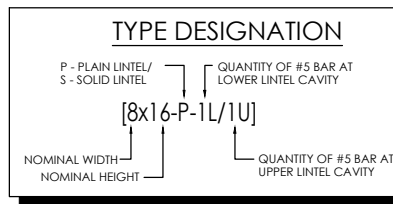
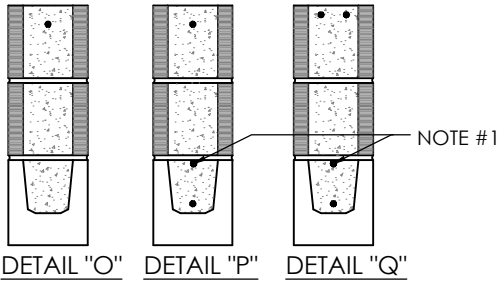
© 2023- THESE DRAWINGS AND DESIGNS ARE THE
JOINT PROPERTY OF DANSCO ENGINEERING, P.A. AND
THE CLIENT ON THIS PROJECT. ANY REPRODUCTION OR
UNAUTHORIZED USE IS PROHIBITED.

10/10/2023 7:31:39 PM, ANSI full bleed A (8.50 x 11.00 Inches)

REINFORCING SCHEDULE & LOAD CAPACITIES SAFE WORKING LOADS (PLF) 8" X 24" COMPOSITE LINTELS

LINTEL LENGTH	CLEAR SPAN	LINTEL TYPE	LINTEL STEEL TOP WIRE / BAR	LINTEL STEEL BOTTOM BAR	GRAVITY CAPACITY (0)#5L (1)#5U DETAIL 'O'	GRAVITY CAPACITY (1)#5L (1)#5U DETAIL 'P'	UPLIFT CAPACITY (0)#5L (1)#5U (1)#4L (1)#5U DETAIL 'O' & 'P'	UPLIFT CAPACITY (1)#5L (2)#5U DETAIL 'Q'
2'-10"	1'-6"	PRECAST	(2) D4.5 WIRE	(2) No. 3	10000*	10000*	10000*	10000*
3'-6"	2'-2"	PRECAST	(2) D4.5 WIRE	(2) No. 3	10000*	10000*	10000*	10000*
4'-0"	2'-8"	PRECAST	(2) D4.5 WIRE	(2) No. 3	8315*	8315*	8315*	8315*
4'-6"	3'-2"	PRECAST	(2) D4.5 WIRE	(2) No. 3	6752*	6752*	6752*	6752*
4'-8"	3'-4"	PRECAST	(2) D4.5 WIRE	(2) No. 3	6347*	6347*	6347*	6347*
5'-4"	4'-0"	PRECAST	(2) D4.5 WIRE	(2) No. 3	7681	10000	10000	10000
5'-10"	4'-6"	PRECAST	(2) D4.5 WIRE	(2) No. 3	6251	10000	8615	10000
6'-6"	5'-2"	PRECAST	(2) D4.5 WIRE	(2) No. 4	8629	10000	6741	10000
7'-6"	6'-2"	PRECAST	(2) D4.5 WIRE	(2) No. 4	6266	6603	4891	6909
7'-8"	6'-4"	PRECAST	(2) D4.5 WIRE	(2) No. 4	5967	6199	4657	6477
8'-0"	6'-8"	PRECAST	(2) D4.5 WIRE	(2) No. 4	5430	5524	4236	5756
8'-4"	7'-0"	PRECAST	(2) D4.5 WIRE	(2) No. 4	4961	4979	3869	5178
9'-4"	8'-0"	PRECAST	(2) D4.5 WIRE	(2) No. 4	3865	3838	3010	3973
10'-6"	9'-2"	PRECAST	(2) D4.5 WIRE	(2) No. 4	2984	3021	2320	3118
11'-4"	10'-0"	PRECAST	(2) No. 3	(2) No. 5	2699	2699	1959	2699
12'-0"	10'-8"	PRECAST	(2) No. 3	(2) No. 5	2436	2436	1727	2436
12'-6"	11'-2"	PRECAST	(2) No. 3	(2) No. 5	2269	2269	1577	2269
13'-4"	12'-0"	PRECAST	(2) No. 3	(2) No. 5	2034	2034	1366	2034
14'-0"	12'-8"	PRECAST	(2) No. 3	(2) No. 5	1878	1878	1225	1878
14'-8"	13'-4"	PRESTRESSED	(2) No. 3	(2) 7/16 strand + (2) No. 4	2413	2413	1338	1974
15'-4"	14'-0"	PRESTRESSED	(2) No. 3	(2) 7/16 strand + (2) No. 4	2199	2199	1219	1846
17'-4"	16'-0"	PRESTRESSED	(2) No. 3	(2) 7/16 strand + (2) No. 4	1698	1698	944	1546
19'-4"	18'-0"	PRESTRESSED	(2) No. 3	(2) 7/16 strand + (2) No. 5	1348	1348	753	1330
20'-0"	18'-8"	PRESTRESSED	(2) No. 3	(2) 7/16 strand + (2) No. 5	1254	1254	702	1271
21'-4"	20'-0"	PRESTRESSED	(2) No. 3	(2) 7/16 strand + (2) No. 5	1092	1092	614	1167
22'-0"	20'-8"	PRESTRESSED	(2) No. 3	(2) 7/16 strand + (2) No. 5	1023	1023	576	1121
24'-0"	22'-8"	PRESTRESSED	(2) No. 3	(2) 7/16 strand + (2) No. 5	898	898	481	947

* LINTEL MEETS DEEP BEAM CRITERIA



NOTE #1: (1) #4 MIN. REQUIRED FOR DEEP BEAM ONLY

Samuel A. Greenberg, State of Florida, Professional Engineer,
License No. 34245

This item has been X[] signed and sealed by
Samuel A. Greenberg, PE on 10/20/2023 using a Digital
Signature.

Printed copies of this document are not considered Signed
and sealed and h Y G-5 U i h Y b h W h c b W c X Y must be
j erified on any electronic copies.



10/10/2023 7:31:40 PM, ANSI full bleed A (8.50 x 11.00 Inches)

DE DANSCO
ENGINEERING, P.A.
6423 RUBIA CIRCLE
APOLLO BEACH - FLORIDA - 33512
PHONE - (813) 917 1824 FAX - (813) 917 1824

8" LINTEL LOAD TABLE

QUALITY PRECAST COMPANY

P.O. Box 11
Brandon, FL 33509
www.qualityprecast.com
(813) 685-5615

SAMUEL A. GREENBERG, P.E. #34245

SHT. NO.

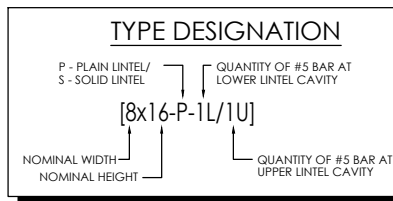
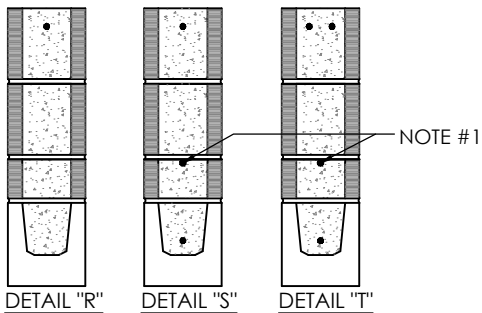
SK6 of 23

© 2023- THESE DRAWINGS AND DESIGNS ARE THE
JOINT PROPERTY OF DANSCO ENGINEERING, P.A. AND
THE CLIENT ON THIS PROJECT. ANY REPRODUCTION OR
UNAUTHORIZED USE IS PROHIBITED.

REINFORCING SCHEDULE & LOAD CAPACITIES
SAFE WORKING LOADS (PLF)
8" X 28" COMPOSITE LINTELS

LINTEL LENGTH	CLEAR SPAN	LINTEL TYPE	LINTEL STEEL TOP WIRE / BAR	LINTEL STEEL BOTTOM BAR	GRAVITY CAPACITY (0)#5L (1)#5U DETAIL 'R'	GRAVITY CAPACITY (1)#5L (1)#5U DETAIL 'S'	UPLIFT CAPACITY (0)#5L (1)#5U (1)#5L (1)#5U DETAIL 'R' & 'S'	UPLIFT CAPACITY (1)#5L (2)#5U DETAIL 'T'
2'-10"	1'-6"	PRECAST	(2) D4.5 WIRE	(2) No. 3	10000*	10000*	10000*	10000*
3'-6"	2'-2"	PRECAST	(2) D4.5 WIRE	(2) No. 3	10000*	10000*	10000*	10000*
4'-0"	2'-8"	PRECAST	(2) D4.5 WIRE	(2) No. 3	9488*	9488*	9488*	9488*
4'-6"	3'-2"	PRECAST	(2) D4.5 WIRE	(2) No. 3	7725*	7725*	7725*	7725*
4'-8"	3'-4"	PRECAST	(2) D4.5 WIRE	(2) No. 3	7220*	7220*	7220*	7220*
5'-4"	4'-0"	PRECAST	(2) D4.5 WIRE	(2) No. 3	5780*	5780*	5780*	5780*
5'-10"	4'-6"	PRECAST	(2) D4.5 WIRE	(2) No. 3	7409	10000	10000	10000
6'-6"	5'-2"	PRECAST	(2) D4.5 WIRE	(2) No. 4	10000	10000	8002	10000
7'-6"	6'-2"	PRECAST	(2) D4.5 WIRE	(2) No. 4	7440	10000	5806	10000
7'-8"	6'-4"	PRECAST	(2) D4.5 WIRE	(2) No. 4	7086	9402	5529	9872
8'-0"	6'-8"	PRECAST	(2) D4.5 WIRE	(2) No. 4	6448	8101	5030	8468
8'-4"	7'-0"	PRECAST	(2) D4.5 WIRE	(2) No. 4	5892	7113	4594	7410
9'-4"	8'-0"	PRECAST	(2) D4.5 WIRE	(2) No. 4	4591	5200	3575	5382
10'-6"	9'-2"	PRECAST	(2) D4.5 WIRE	(2) No. 4	3546	3948	2757	4069
11'-4"	10'-0"	PRECAST	(2) No. 3	(2) No. 5	3381	3381	2329	3461
12'-0"	10'-8"	PRECAST	(2) No. 3	(2) No. 5	3020	3020	2053	3089
12'-6"	11'-2"	PRECAST	(2) No. 3	(2) No. 5	2796	2796	1875	2857
13'-4"	12'-0"	PRECAST	(2) No. 3	(2) No. 5	2485	2485	1625	2538
14'-0"	12'-8"	PRECAST	(2) No. 3	(2) No. 5	2281	2281	1458	2328
14'-8"	13'-4"	PRESTRESSED	(2) No. 3	(2) 7/16 strand + (2) No. 4	2951	2951	1583	2409
15'-4"	14'-0"	PRESTRESSED	(2) No. 3	(2) 7/16 strand + (2) No. 4	2689	2689	1443	2242
17'-4"	16'-0"	PRESTRESSED	(2) No. 3	(2) 7/16 strand + (2) No. 4	2079	2079	1117	1857
19'-4"	18'-0"	PRESTRESSED	(2) No. 3	(2) 7/16 strand + (2) No. 5	1652	1652	890	1585
20'-0"	18'-8"	PRESTRESSED	(2) No. 3	(2) 7/16 strand + (2) No. 5	1538	1538	830	1511
21'-4"	20'-0"	PRESTRESSED	(2) No. 3	(2) 7/16 strand + (2) No. 5	1341	1341	726	1382
22'-0"	20'-8"	PRESTRESSED	(2) No. 3	(2) 7/16 strand + (2) No. 5	1256	1256	682	1326
24'-0"	22'-8"	PRESTRESSED	(2) No. 3	(2) 7/16 strand + (2) No. 5	1064	1064	570	1123

* LINTEL MEETS DEEP BEAM CRITERIA



NOTE #1: (1) #4 MIN. REQUIRED FOR DEEP BEAM ONLY

Samuel A. Greenberg, State of Florida, Professional Engineer,
 License No. 34245

This item has been X[] signed and sealed by
 Samuel A. Greenberg, PE on 10/20/2023 using a Digital
 Signature.

Printed copies of this document are not considered Signed
 and sealed and the Client must be notified and verified on any electronic copies.



8" LINTEL LOAD TABLE

QUALITY PRECAST COMPANY

P.O. Box 11
 Brandon, FL 33509
 www.qualityprecast.com
 (813) 685-5615

DE DANSCO
 ENGINEERING, P.A.
 6423 RUBIA CIRCLE
 APOLLO BEACH - FLORIDA - 33512
 PHONE - (813) 917 1524 FAX 813 917 1524

SAMUEL A. GREENBERG, P.E. #34245

SHT. NO.
SK7 of 23

10/10/2023 7:31:40 PM, ANSI full bleed A (8.50 x 11.00 Inches)

© 2023- THESE DRAWINGS AND DESIGNS ARE THE JOINT PROPERTY OF DANSCO ENGINEERING, P.A., AND THE CLIENT ON THIS PROJECT. ANY REPRODUCTION OR UNAUTHORIZED USE IS PROHIBITED.

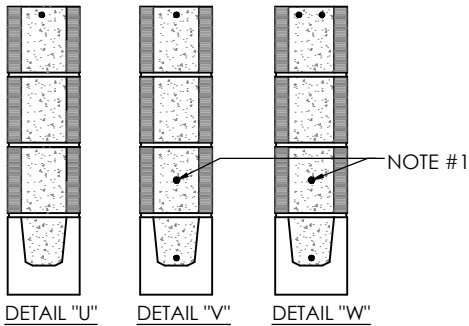
REINFORCING SCHEDULE & LOAD CAPACITIES

SAFE WORKING LOADS (PLF)

8" X 32" COMPOSITE LINTELS

LINTEL LENGTH	CLEAR SPAN	LINTEL TYPE	LINTEL STEEL TOP WIRE / BAR	LINTEL STEEL BOTTOM BAR	GRAVITY CAPACITY (0)#5L (1)#5U DETAIL 'U'	GRAVITY CAPACITY (1)#5L (1)#5U DETAIL 'V'	UPLIFT CAPACITY (0)#5L (1)#5U (1)#5L (1)#5U DETAIL 'U' & 'V'	UPLIFT CAPACITY (1)#5L (2)#5U DETAIL 'W'
2'-10"	1'-6"	PRECAST	(2) D4.5 WIRE	(2) No. 3	10000*	10000*	10000*	10000*
3'-6"	2'-2"	PRECAST	(2) D4.5 WIRE	(2) No. 3	10000*	10000*	10000*	10000*
4'-0"	2'-8"	PRECAST	(2) D4.5 WIRE	(2) No. 3	10000*	10000*	10000*	10000*
4'-6"	3'-2"	PRECAST	(2) D4.5 WIRE	(2) No. 3	8700*	8700*	8700*	8700*
4'-8"	3'-4"	PRECAST	(2) D4.5 WIRE	(2) No. 3	8194*	8194*	8194*	8194*
5'-4"	4'-0"	PRECAST	(2) D4.5 WIRE	(2) No. 3	6553*	6553*	6553*	6553*
5'-10"	4'-6"	PRECAST	(2) D4.5 WIRE	(2) No. 3	5700*	5776*	5776*	5776*
6'-6"	5'-2"	PRECAST	(2) D4.5 WIRE	(2) No. 4	7924	10000	9263	10000
7'-6"	6'-2"	PRECAST	(2) D4.5 WIRE	(2) No. 4	5748	10000	6723	10000
7'-8"	6'-4"	PRECAST	(2) D4.5 WIRE	(2) No. 4	5473	9564	6402	10000
8'-0"	6'-8"	PRECAST	(2) D4.5 WIRE	(2) No. 4	4978	8706	5824	10000
8'-4"	7'-0"	PRECAST	(2) D4.5 WIRE	(2) No. 4	4546	7957	5320	10000
9'-4"	8'-0"	PRECAST	(2) D4.5 WIRE	(2) No. 4	3536	6205	4141	7410
10'-6"	9'-2"	PRECAST	(2) D4.5 WIRE	(2) No. 4	2725	4798	3194	5322
11'-4"	10'-0"	PRECAST	(2) No. 3	(2) No. 5	3615	5348	2699	4424
12'-0"	10'-8"	PRECAST	(2) No. 3	(2) No. 5	3191	3670	2379	3894
12'-6"	11'-2"	PRECAST	(2) No. 3	(2) No. 5	2919	3369	2174	3572
13'-4"	12'-0"	PRECAST	(2) No. 3	(2) No. 5	2535	2961	1884	3137
14'-0"	12'-8"	PRECAST	(2) No. 3	(2) No. 5	2278	2698	1691	2856
14'-8"	13'-4"	PRESTRESSED	(2) No. 3	(2) 7/16 strand + (2) No. 4	3326	3326	1829	2919
15'-4"	14'-0"	PRESTRESSED	(2) No. 3	(2) 7/16 strand + (2) No. 4	3031	3031	1666	2702
17'-4"	16'-0"	PRESTRESSED	(2) No. 3	(2) 7/16 strand + (2) No. 4	2346	2346	1290	2210
19'-4"	18'-0"	PRESTRESSED	(2) No. 3	(2) 7/16 strand + (2) No. 5	1865	1865	1029	1869
20'-0"	18'-8"	PRESTRESSED	(2) No. 3	(2) 7/16 strand + (2) No. 5	1737	1737	959	1778
21'-4"	20'-0"	PRESTRESSED	(2) No. 3	(2) 7/16 strand + (2) No. 5	1516	1516	839	1620
22'-0"	20'-8"	PRESTRESSED	(2) No. 3	(2) 7/16 strand + (2) No. 5	1420	1420	787	1551
24'-0"	22'-8"	PRESTRESSED	(2) No. 3	(2) 7/16 strand + (2) No. 5	1250	1250	658	1300

* LINTEL MEETS DEEP BEAM CRITERIA

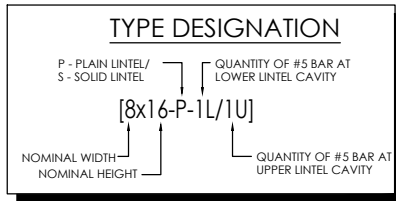


NOTE #1: (1) #4 MIN. REQUIRED FOR DEEP BEAM ONLY

Samuel A. Greenberg, State of Florida, Professional Engineer, License No. 34245

This item has been X] signed and sealed by Samuel A. Greenberg, PE on 10/20/2023 using a Digital Signature.

Printed copies of this document are not considered Signed and sealed and ANY 'G-5' U i h Y b h W h c b W c X Y must be j erified on any electronic copies.



10/10/2023 7:31:41 PM, ANSI full bleed A (8.50 x 11.00 Inches)

DE DANSCO ENGINEERING, P.A.
6423 RUBIA CIRCLE
APOLLO BEACH - FLORIDA - 33512
PHONE - (813) 917 1824 FAX 813 917 1824

8" LINTEL LOAD TABLE

QUALITY PRECAST COMPANY

P.O. Box 11
Brandon, FL 33509
www.qualityprecast.com
(813) 685-5615



SAMUEL A. GREENBERG, P.E. #34245

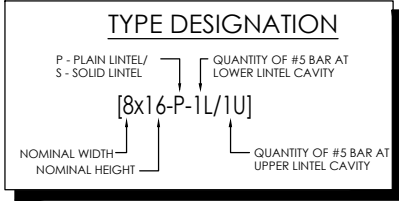
SHT. NO.

SK8 of 23

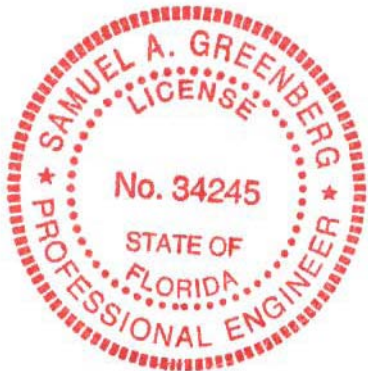
© 2023- THESE DRAWINGS AND DESIGNS ARE THE JOINT PROPERTY OF DANSCO ENGINEERING, P.A. AND THE CLIENT ON THIS PROJECT. ANY REPRODUCTION OR UNAUTHORIZED USE IS PROHIBITED.

SAFE WORKING LATERAL LOADS (PLF) 8" X 8" LINTELS			
Total Length	Type	8"x8" PLAIN	8"x8" SOLID
2'-10"	Precast	2082	9235
3'-6"	Precast	1325	4624
4'-0"	Precast	1041	3358
4'-6"	Precast	858	2635
4'-8"	Precast	810	2459
5'-4"	Precast	663	1940
5'-10"	Precast	583	1624
6'-6"	Precast	486	1396
7'-6"	Precast	403	1134
7'-8"	Precast	392	1100
8'-0"	Precast	363	1037
8'-4"	Precast	318	981
9'-4"	Precast	222	772
10'-6"	Precast	156	600
11'-4"	Precast	132	651
12'-0"	Precast	111	593
12'-6"	Precast	98	544
13'-4"	Precast	82	475
14'-0"	Precast	71	429
14'-8"	Prestressed	N.R.	417
15'-4"	Prestressed	N.R.	369
17'-4"	Prestressed	N.R.	257
19'-4"	Prestressed	N.R.	184
20'-0"	Prestressed	N.R.	167
21'-4"	Prestressed	N.R.	138
22'-0"	Prestressed	N.R.	127
24'-0"	Prestressed	N.R.	100

N.R. = Not Recommended



Samuel A. Greenberg, State of Florida, Professional Engineer,
License No. 34245
This item has been X] [] signed and sealed by
Samuel A. Greenberg, PE on 10/20/2023 using a Digital
Signature.
Printed copies of this document are not considered Signed
and sealed and h Y 'G< 5 'Ui h Y bh]MU h c b Wc XY ' must be
j erified on any electronic copies.



10/10/2023 7:31:42 PM, ANSI full bleed A (8.50 x 11.00 Inches)

<p>DE DANSCO ENGINEERING, P.A. 6423 RUBIA CIRCLE APOLLO BEACH - FLORIDA - 33512 PHONE - (813) 911 1824 8AM@DEE@AOL.COM</p> <p>© 2023- THESE DRAWINGS AND DESIGNS ARE THE JOINT PROPERTY OF DANSCO ENGINEERING, P.A., AND THE CLIENT ON THIS PROJECT. ANY REPRODUCTION OR UNAUTHORIZED USE IS PROHIBITED.</p>	8" LINTEL LOAD TABLE	
	<p>QUALITY PRECAST COMPANY</p> <p>P.O. Box 11 Brandon, FL 33509 www.qualityprecast.com (813) 685-5615</p>	
	<input type="checkbox"/> SAMUEL A. GREENBERG, P.E. #34245	SHT. NO. SK9 of 23

GENERAL NOTES:

1.) CODES

- 1.1 FLORIDA BUILDING CODE 7th EDITION, 2020 RESIDENTIAL SECTIONS R402.2 & R606.
- 1.2 FLORIDA BUILDING CODE, 7th EDITION, 2020 BUILDING SECTIONS 1901.2 & 2101.
- 1.3 BUILDING CODE REQUIREMENTS FOR REINFORCED CONCRETE (ACI 318-14).
- 1.4 BUILDING CODE REQUIREMENTS FOR MASONRY STRUCTURES (TMS 402-16).
- 1.5 SPECIFICATIONS REQUIREMENTS FOR MASONRY STRUCTURES (TMS 602-16).
- 1.6 AMERICAN SOCIETY OF CIVIL ENGINEERS MINIMUM DESIGN LOADS FOR BUILDINGS AND OTHER STRUCTURES (ASCE 7-16).

2.) CONCRETE:

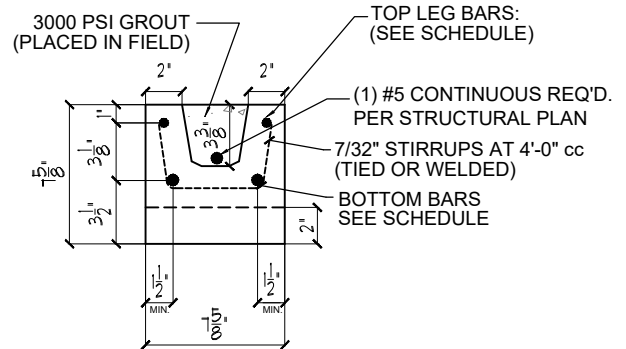
- 2.1 CONCRETE COMPRESSIVE STRENGTH AT 28 DAYS:
 - 2.1.1 PRE-CAST WITH STANDARD REINFORCEMENT - 5000PSI
 - 2.1.2 GROUT PER ASTM C416 $f'c=3,000PSI$ WITH MAXIMUM 3/8" AGGREGATE AND 8' TO 11' SLUMP.
- 2.2 REINFORCING BARS:
 - 2.2.1 STEEL PLACED IN PRE-CAST LINTEL AT TIME OF FABRICATION ASTM A615 (GRADE 60).
 - 2.2.2 STEEL IN LINTEL AND KNOCKOUT BLOCK (PLACED IN FIELD) ASTM A615 (GRADE 40).
- 2.3 DETAIL REINFORCEMENT IN ACCORDANCE WITH ACI 318.
- 2.4 CONCRETING OPERATIONS SHALL COMPLY WITH ACI STANDARDS.
- 2.5 D45 WIRE PER ASTM A1064.

3.) MASONRY:

- 3.1 CONCRETE MASONRY UNITS (CMU) SHALL CONFORM TO ASTM C-90, NORMAL WEIGHT WITH MINIMUM NET AREA COMPRESSIVE STRENGTH 2000PSI.
- 3.2 MORTAR SHALL CONFORM TO ASTM C-270 TYPE 'M' OR 'S'.
- 3.3 FULL MORTAR JOINTS ARE REQUIRED.
- 3.4 MINIMUM AGGREGATE 28-DAY COMPRESSIVE STRENGTH OF CMU AND MORTAR SHALL NOT BE LESS THAN $f'm = 2,000$ PSI. MASONRY STRENGTH SHALL BE ESTABLISHED BY THE 'UNIT STRENGTH METHOD' OR, ALTERNATIVELY BY THE 'PRISM TEST METHOD' WHERE UNIT STRENGTH METHOD REQUIREMENTS HAVE NOT BEEN MET.

4.) STRUCTURAL:

- 4.1 SAFE LOAD VALUES ARE BASED ON LINTELS HAVING A BEARING OF 8" (WITH A MINIMUM ACCEPTABLE BEARING OF 4" FOR FILLED LINTELS AND 6 1/2" FOR UNFILLED LINTELS IN DIRECTION OF SPAN PER TMS 402-16 SECTION 4.3.4).
- 4.2 SAFE LOAD VALUES ARE BASED ON RATIONAL DESIGN ANALYSIS PER ACI 318 AND TMS 402.
- 4.3 DESIGNER MAY EVALUATE CONCENTRATED LOADS FROM THE SAFE LOAD TABLES BY CALCULATING MAXIMUM RESISTING MOMENT AND SHEAR AT d DISTANCE AWAY FROM THE FACE OF THE SUPPORT.
- 4.4 LINTELS THAT ARE GREATER THAN 14'-0" CLEAR SPAN MUST BE PROVIDED TEMPORARY SUPPORT AND NOT BE REMOVED UNTIL TWO (2) DAYS AFTER GROUT PLACEMENT.
- 4.5 FOR LINTEL LENGTH AT 6'-6" OR GREATER, VERTICAL CELL FILLED SOLID WITH GROUT AND MINIMUM ONE (1) #5 VERTICAL REBAR IS REQUIRED AT EACH END OF THE LINTEL.
- 4.6 FOR COMPOSITE LINTEL HEIGHTS NOT SHOWN, USE SAFE LOAD FROM NEXT LOWER HEIGHT SHOWN.
- 4.7 ANY VARIATION OR ALTERATION OF THE INTENDED DESIGN USE OF THE LINTELS IS PROHIBITED WITHOUT PRIOR APPROVAL OF A STRUCTURAL ENGINEER.



NOTES:

- 1. MINIMUM COVERAGE OF STEEL - 1.5"
- 2. MIN. BEARING REQUIRED AT EA. END - 4"
- 3. STANDARD FOR REINF. STEEL - ASTM A615

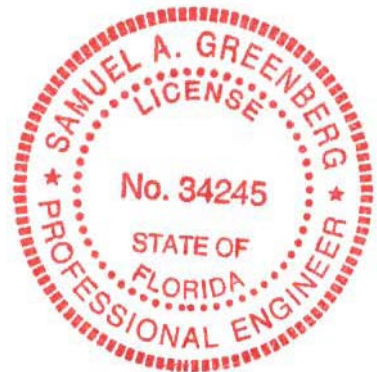
**TYPICAL RECESS LINTEL SECTION
PRECAST CONCRETE**

Samuel A. Greenberg, State of Florida, Professional Engineer, License No. 34245

This item has been X[[] signed and sealed by

Samuel A. Greenberg, PE on 10/20/2023 using a Digital Signature.

Printed copies of this document are not considered Signed and sealed and h Y 'G< 5 'Ui h Y bhjWJhc b 'Wc XY must be j erified on any electronic copies.



10/10/2023 7:31:42 PM, ANSI full bleed A (8.50 x 11.00 Inches)

GENERAL NOTES & DETAILS - RECESS LINTEL

QUALITY PRECAST COMPANY

P.O. Box 11
Brandon, FL 33509
www.qualityprecast.com
(813) 685-5615

DE DANSCO
ENGINEERING, P.A.
6423 RUBIA CIRCLE
APOLLO BEACH - FLORIDA - 33512
PHONE - (813) 911 1524 FAX (813) 911 1524

© 2023- THESE DRAWINGS AND DESIGNS ARE THE JOINT PROPERTY OF DANSCO ENGINEERING, P.A. AND THE CLIENT ON THIS PROJECT. ANY REPRODUCTION OR UNAUTHORIZED USE IS PROHIBITED.

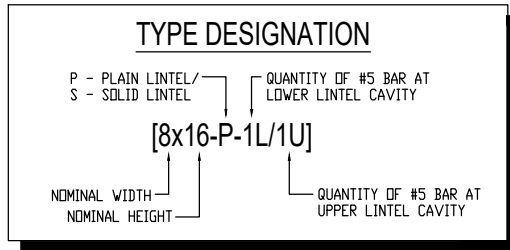
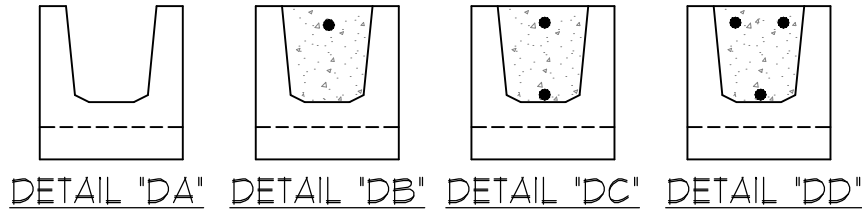
SAMUEL A. GREENBERG, P.E. #34245

SHT. NO.

SK10 of 23

GRAVITY & UPLIFT SAFE LOADS (PLF)
8" x 8" RECESS DOOR HEADER

TOTAL LENGTH	CLEAR SPAN	DOOR SIZE	LINTEL TYPE	LINTEL STEEL TOP WIRE/ BAR	LINTEL STEEL BOTTOM BAR	GRAVITY SAFE LOAD			UPLIFT SAFE LOAD	
						PLAIN	SOLID #5(1)U(0)L	SOLID #5(1)U(1)L	SOLID #5(1)U(0)L #5(1)U(1)L	SOLID #5(2)U(1)L
						DETAIL DA	DETAIL DB	DETAIL DC	DETAIL DB & DC	DETAIL DD
3' - 8"	2' - 4"	2' - 0"	PRECAST	(2) D4.5 WIRE	(2) # 3	1753	2011	2011	1674	1674
4' - 0"	2' - 8"	2' - 4"	PRECAST	(2) D4.5 WIRE	(2) # 3	1459	1690	1690	1420	1420
4' - 2"	2' - 10"	2' - 6"	PRECAST	(2) D4.5 WIRE	(2) # 3	1346	1564	1564	1320	1320
4' - 4"	3' - 0"	2' - 8"	PRECAST	(2) D4.5 WIRE	(2) # 3	1249	1456	1456	1233	1233
4' - 8"	3' - 4"	3' - 0"	PRECAST	(2) D4.5 WIRE	(2) # 3	1091	1278	1278	1090	1090
5' - 8"	4' - 4"	4' - 0"	PRECAST	(2) D4.5 WIRE	(2) # 3	789	933	933	808	808
6' - 8"	5' - 4"	5' - 0"	PRECAST	(2) D4.5 WIRE	(2) # 4	604	764	764	641	642
7' - 8"	6' - 4"	6' - 0"	PRECAST	(2) D4.5 WIRE	(2) # 4	494	627	627	485	532
9' - 8"	8' - 4"	8' - 0"	PRECAST	(2) D4.5 WIRE	(2) # 4	361	458	458	287	397



Samuel A. Greenberg, State of Florida, Professional Engineer,
License No. 34245

This item has been X[[] signed and sealed by
Samuel A. Greenberg, PE on **10/20/2023** using a Digital Signature.

Printed copies of this document are not considered Signed and sealed and ANY G<5'Ui h\Ybh\WUhc'b Wc XY must be j erified on any electronic copies.



10/10/2023 7:31:43 PM, ANSI full bleed A (8.50 x 11.00 inches)

DE DANSCO
ENGINEERING, P.A.
6423 RUBIA CIRCLE
APOLLO BEACH - FLORIDA - 33512
PHONE - (813) 911 1524 8AM@DANSCO.COM

8" RECESS DOOR HEADER LOAD TABLE

QUALITY PRECAST COMPANY

P.O. Box 11
Brandon, FL 33509
www.qualityprecast.com
(813) 685-5615

SAMUEL A. GREENBERG, P.E. #34245

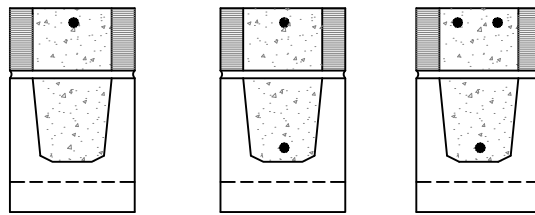
SHT. NO.

SK11 of 23

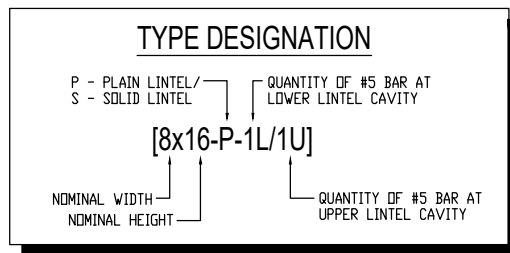
© 2023- THESE DRAWINGS AND DESIGNS ARE THE JOINT PROPERTY OF DANSCO ENGINEERING, P.A. AND THE CLIENT ON THIS PROJECT. ANY REPRODUCTION OR UNAUTHORIZED USE IS PROHIBITED.

**GRAVITY & UPLIFT SAFE LOADS (PLF)
8" x 12" RECESS DOOR HEADER**

TOTAL LENGTH	CLEAR SPAN	DOOR SIZE	LINTEL TYPE	LINTEL STEEL TOP WIRE/ BAR	LINTEL STEEL BOTTOM BAR	GRAVITY SAFE LOAD		UPLIFT SAFE LOAD	
						SOLID #5(1)U(0)L	SOLID #5(1)U(1)L	SOLID #5(1)U(0)L #5(1)U(1)L	SOLID #5(2)U(1)L
						DETAIL DE	DETAIL DF	DETAIL DE & DF	DETAIL DG
3' - 8"	2' - 4"	2' - 0"	PRECAST	(2) D4.5 WIRE	(2) # 3	3804	6181	5440	5440
4' - 0"	2' - 8"	2' - 4"	PRECAST	(2) D4.5 WIRE	(2) # 3	3001	4752	4256	4256
4' - 2"	2' - 10"	2' - 6"	PRECAST	(2) D4.5 WIRE	(2) # 3	2681	4259	3838	3838
4' - 4"	3' - 0"	2' - 8"	PRECAST	(2) D4.5 WIRE	(2) # 3	2425	3857	3495	3495
4' - 8"	3' - 4"	3' - 0"	PRECAST	(2) D4.5 WIRE	(2) # 3	1986	3244	2965	2965
5' - 8"	4' - 4"	4' - 0"	PRECAST	(2) D4.5 WIRE	(2) # 3	1204	2190	2038	2038
6' - 8"	5' - 4"	5' - 0"	PRECAST	(2) D4.5 WIRE	(2) # 4	1686	1686	1552	1552
7' - 8"	6' - 4"	6' - 0"	PRECAST	(2) D4.5 WIRE	(2) # 4	1346	1346	1225	1253
9' - 8"	8' - 4"	8' - 0"	PRECAST	(2) D4.5 WIRE	(2) # 4	955	955	725	905



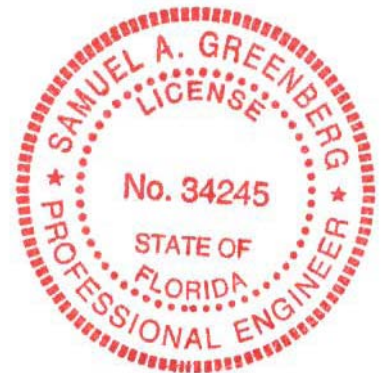
DETAIL "DE" DETAIL "DF" DETAIL "DG"



Samuel A. Greenberg, State of Florida, Professional Engineer,
License No. 34245

This item has been X[[]U]]msigned and sealed by
Samuel A. Greenberg, PE on **10/20/2023** using a Digital Signature.

Printed copies of this document are not considered Signed and sealed and H\Y 'G<5 'Ui H\Y b\j\W\h\c\b 'Wc XY ' must be j erified on any electronic copies.



8" RECESS DOOR HEADER LOAD TABLE

QUALITY PRECAST COMPANY

P.O. Box 11
Brandon, FL 33509
www.qualityprecast.com
(813) 685-5615

DE DANSCO
ENGINEERING, P.A.
6423 RUBIA CIRCLE
APOLLO BEACH - FLORIDA - 33512
PHONE - (813) 911 1524 8AM@DEIPE@AOL.COM

SAMUEL A. GREENBERG, P.E. #34245

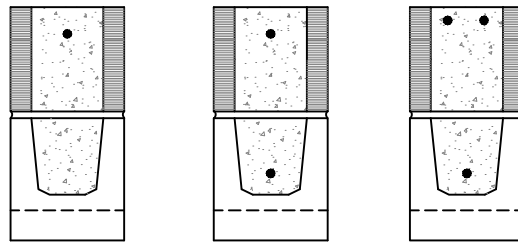
SHT. NO.
SK12 of 23

© 2023- THESE DRAWINGS AND DESIGNS ARE THE JOINT PROPERTY OF DANSCO ENGINEERING, P.A. AND THE CLIENT ON THIS PROJECT. ANY REPRODUCTION OR UNAUTHORIZED USE IS PROHIBITED.

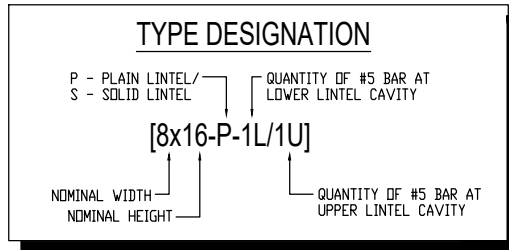
10/10/2023 7:31:44 PM, ANSI full bleed A (8.50 x 11.00 inches)

**GRAVITY & UPLIFT SAFE LOADS (PLF)
8" x 16" RECESS DOOR HEADER**

TOTAL LENGTH	CLEAR SPAN	DOOR SIZE	LINTEL TYPE	LINTEL STEEL TOP WIRE/ BAR	LINTEL STEEL BOTTOM BAR	GRAVITY SAFE LOAD		UPLIFT SAFE LOAD	
						SOLID #5(1)U(0)L	SOLID #5(1)U(1)L	SOLID #5(1)U(0)L #5(1)U(1)L	SOLID #5(2)U(1)L
						DETAIL DH	DETAIL DJ	DETAIL DH & DJ	DETAIL DK
3' - 8"	2' - 4"	2' - 0"	PRECAST	(2) D4.5 WIRE	(2) # 3	5757	10000	10000	10000
4' - 0"	2' - 8"	2' - 4"	PRECAST	(2) D4.5 WIRE	(2) # 3	4544	10000	8397	8397
4' - 2"	2' - 10"	2' - 6"	PRECAST	(2) D4.5 WIRE	(2) # 3	4062	10000	7229	7229
4' - 4"	3' - 0"	2' - 8"	PRECAST	(2) D4.5 WIRE	(2) # 3	3674	8838	6346	6346
4' - 8"	3' - 4"	3' - 0"	PRECAST	(2) D4.5 WIRE	(2) # 3	3011	6797	5100	5100
5' - 8"	4' - 4"	4' - 0"	PRECAST	(2) D4.5 WIRE	(2) # 3	4002	4002	3210	3210
6' - 8"	5' - 4"	5' - 0"	PRECAST	(2) D4.5 WIRE	(2) # 4	2876	2876	2342	2342
7' - 8"	6' - 4"	6' - 0"	PRECAST	(2) D4.5 WIRE	(2) # 4	2214	2214	1780	1843
9' - 8"	8' - 4"	8' - 0"	PRECAST	(2) D4.5 WIRE	(2) # 4	1592	1508	1053	1293



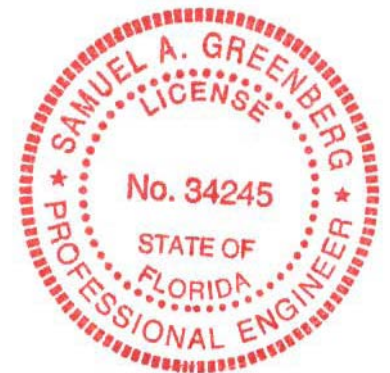
DETAIL "DH" DETAIL "DJ" DETAIL "DK"



Samuel A. Greenberg, State of Florida, Professional Engineer,
License No. **34245**

This item has been X[] signed and sealed by
Samuel A. Greenberg, PE on **10/20/2023** using a Digital Signature.

Printed copies of this document are not considered Signed and sealed and h Y 'G< 5 'Ui h Y b h W h j c b 'W c XY' must be j erified on any electronic copies.



8" RECESS DOOR HEADER LOAD TABLE

QUALITY PRECAST COMPANY

P.O. Box 11
Brandon, FL 33509
www.qualityprecast.com
(813) 685-5615

DE DANSCO
ENGINEERING, P.A.
6423 RUBIA CIRCLE
APOLLO BEACH - FLORIDA - 33512
PHONE - (813) 911 1524 8AM@DSEIPE@AOL.COM

© 2023- THESE DRAWINGS AND DESIGNS ARE THE JOINT PROPERTY OF DANSCO ENGINEERING, P.A. AND THE CLIENT ON THIS PROJECT. ANY REPRODUCTION OR UNAUTHORIZED USE IS PROHIBITED.

SAMUEL A. GREENBERG, P.E. #34245

SHT. NO.
SK13 of 23

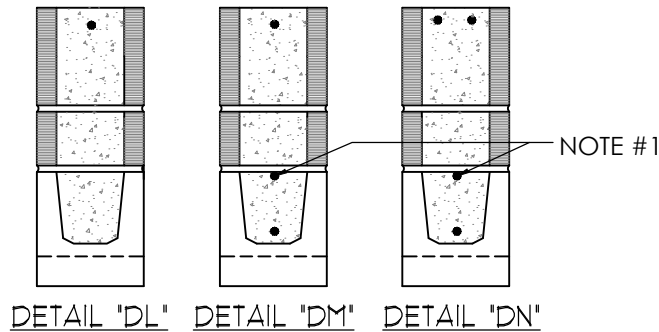
10/10/2023 7:31:45 PM, ANSI full bleed A (8.50 x 11.00 inches)

**GRAVITY & UPLIFT SAFE LOADS (PLF)
8" x 20" RECESS DOOR HEADER**

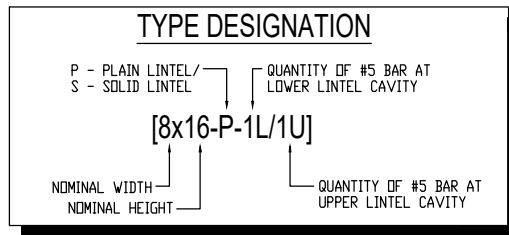
TOTAL LENGTH	CLEAR SPAN	DOOR SIZE	LINTEL TYPE	LINTEL STEEL TOP WIRE/ BAR	LINTEL STEEL BOTTOM BAR	GRAVITY SAFE LOAD		UPLIFT SAFE LOAD	
						SOLID #5(1)U(0)L	SOLID #5(1)U(1)L	SOLID #5(1)U(0)L #5(1)U(1)L	SOLID #5(2)U(1)L
						DETAIL DL	DETAIL DM	DETAIL DL & DM	DETAIL DN
3' - 8"	2' - 4"	2' - 0"	PRECAST	(2) D4.5 WIRE	(2) # 3	6213*	6213*	6213*	6213*
4' - 0"	2' - 8"	2' - 4"	PRECAST	(2) D4.5 WIRE	(2) # 3	6081	10000	7415	10000
4' - 2"	2' - 10"	2' - 6"	PRECAST	(2) D4.5 WIRE	(2) # 3	5444	10000	6633	10000
4' - 4"	3' - 0"	2' - 8"	PRECAST	(2) D4.5 WIRE	(2) # 3	4924	10000	6002	10000
4' - 8"	3' - 4"	3' - 0"	PRECAST	(2) D4.5 WIRE	(2) # 3	4037	10000	4925	10000
5' - 8"	4' - 4"	4' - 0"	PRECAST	(2) D4.5 WIRE	(2) # 3	2458	7064	3006	5669
6' - 8"	5' - 4"	5' - 0"	PRECAST	(2) D4.5 WIRE	(2) # 4	3031	4576	2009	3798
7' - 8"	6' - 4"	6' - 0"	PRECAST	(2) D4.5 WIRE	(2) # 4	2163	3342	1425	2856
9' - 8"	8' - 4"	8' - 0"	PRECAST	(2) D4.5 WIRE	(2) # 4	1241	2158	806	1909

* LINTEL MEETS DEEP BEAM CRITERIA

NOTE #1: (1) #4 MIN. REQUIRED FOR DEEP BEAM ONLY



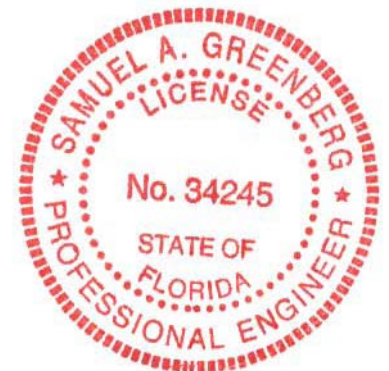
DETAIL "DL" DETAIL "DM" DETAIL "DN"



Samuel A. Greenberg, State of Florida, Professional Engineer,
License No. 34245

This item has been X[] signed and sealed by
Samuel A. Greenberg, PE on **10/20/2023** using a Digital Signature.

Printed copies of this document are not considered Signed and sealed and h.Y' G< 5 'Ui h.Y bhWUhc b Wc XY must be j erified on any electronic copies.



8" RECESS DOOR HEADER LOAD TABLE

QUALITY PRECAST COMPANY

P.O. Box 11
Brandon, FL 33509
www.qualityprecast.com
(813) 685-5615

DE DANSCO
ENGINEERING, P.A.
6423 RUBIA CIRCLE
APOLLO BEACH - FLORIDA - 33512
PHONE - (813) 917 1824 8AM@DEENGINEERING.COM

SAMUEL A. GREENBERG, P.E. #34245

SHT. NO.
SK14 of 23

10/10/2023 7:31:46 PM, ANSI full bleed A (8.50 x 11.00 Inches)

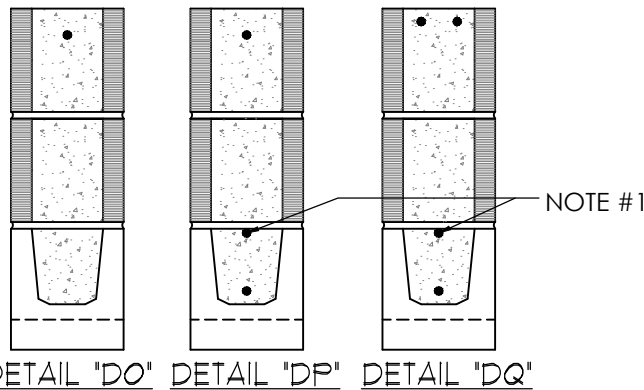
© 2023- THESE DRAWINGS AND DESIGNS ARE THE JOINT PROPERTY OF DANSCO ENGINEERING, P.A. AND THE CLIENT ON THIS PROJECT. ANY REPRODUCTION OR UNAUTHORIZED USE IS PROHIBITED.

**GRAVITY & UPLIFT SAFE LOADS (PLF)
8" x 24" RECESS DOOR HEADER**

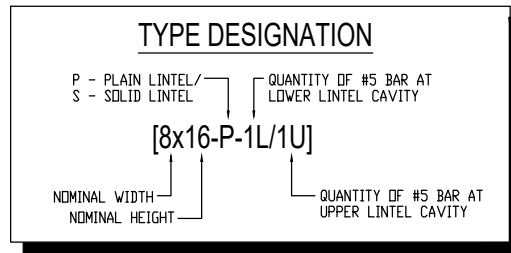
TOTAL LENGTH	CLEAR SPAN	DOOR SIZE	LINTEL TYPE	LINTEL STEEL TOP WIRE/ BAR	LINTEL STEEL BOTTOM BAR	GRAVITY SAFE LOAD		UPLIFT SAFE LOAD	
						SOLID #5(1)U(0)L	SOLID #5(1)U(1)L	SOLID #5(1)U(0)L #5(1)U(1)L	SOLID #5(2)U(1)L
						DETAIL DO	DETAIL DP	DETAIL DO & DP	DETAIL DQ
3' - 8"	2' - 4"	2' - 0"	PRECAST	(2) D4.5 WIRE	(2) # 3	7536*	7536*	7536*	7536*
4' - 0"	2' - 8"	2' - 4"	PRECAST	(2) D4.5 WIRE	(2) # 3	6650*	6650*	6650*	6650*
4' - 2"	2' - 10"	2' - 6"	PRECAST	(2) D4.5 WIRE	(2) # 3	6250*	6250*	6250*	6250*
4' - 4"	3' - 0"	2' - 8"	PRECAST	(2) D4.5 WIRE	(2) # 3	5915*	5915*	5915*	5915*
4' - 8"	3' - 4"	3' - 0"	PRECAST	(2) D4.5 WIRE	(2) # 3	5066	10000	6379	10000
5' - 8"	4' - 4"	4' - 0"	PRECAST	(2) D4.5 WIRE	(2) # 3	3087	10000	3898	10000
6' - 8"	5' - 4"	5' - 0"	PRECAST	(2) D4.5 WIRE	(2) # 4	3798	7098	2610	5945
7' - 8"	6' - 4"	6' - 0"	PRECAST	(2) D4.5 WIRE	(2) # 4	2715	4862	1856	4178
9' - 8"	8' - 4"	8' - 0"	PRECAST	(2) D4.5 WIRE	(2) # 4	1563	2923	1054	2620

* LINTEL MEETS DEEP BEAM CRITERIA

NOTE #1: (1) #4 MIN. REQUIRED FOR DEEP BEAM ONLY



DETAIL "DO" DETAIL "DP" DETAIL "DQ"



Samuel A. Greenberg, State of Florida, Professional Engineer,
 License No. 34245
 This item has been X11 Jhu signed and sealed by
 Samuel A. Greenberg, PE on 10/20/2023 using a Digital
 Signature.
 Printed copies of this document are not considered signed
 and sealed and h Y G 5 U i h Y b h W h c b W e X Y must be
 j erified on any electronic copies.



10/10/2023 7:31:47 PM, ANSI full bleed A (8.50 x 11.00 Inches)

DE DANSCO
 ENGINEERING, P.A.
 6423 RUBIA CIRCLE
 APOLLO BEACH - FLORIDA - 33512
 PHONE - (813) 911 1524 8AM@DEPIPE@AOL.COM

8" RECESS DOOR HEADER LOAD TABLE

QUALITY PRECAST COMPANY

P.O. Box 11
 Brandon, FL 33509
 www.qualityprecast.com
 (813) 685-5615

SAMUEL A. GREENBERG, P.E. #34245

SHT. NO.
SK15 of 23

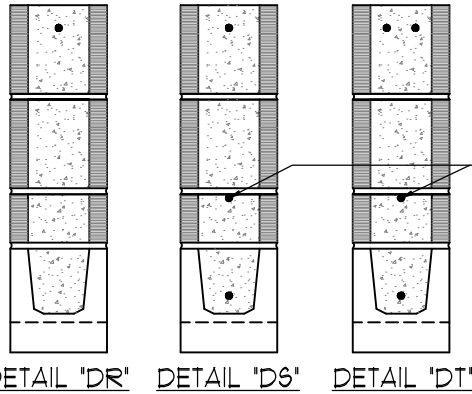
© 2023- THESE DRAWINGS AND DESIGNS ARE THE
 JOINT PROPERTY OF DANSCO ENGINEERING, P.A. AND
 THE CLIENT ON THIS PROJECT. ANY REPRODUCTION OR
 UNAUTHORIZED USE IS PROHIBITED.

**GRAVITY & UPLIFT SAFE LOADS (PLF)
8" x 28" RECESS DOOR HEADER**

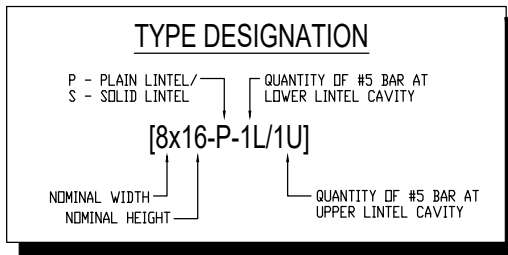
TOTAL LENGTH	CLEAR SPAN	DOOR SIZE	LINTEL TYPE	LINTEL STEEL TOP WIRE/ BAR	LINTEL STEEL BOTTOM BAR	GRAVITY SAFE LOAD		UPLIFT SAFE LOAD	
						SOLID #5(1)U(0)L	SOLID #5(1)U(1)L	SOLID #5(1)U(0)L #5(1)U(1)L	SOLID #5(2)U(1)L
						DETAIL DR	DETAIL DS	DETAIL DR & DS	DETAIL DT
3' - 8"	2' - 4"	2' - 0"	PRECAST	(2) D4.5 WIRE	(2) # 3	8900*	8900*	8900*	8900*
4' - 0"	2' - 8"	2' - 4"	PRECAST	(2) D4.5 WIRE	(2) # 3	7880*	7880*	7880*	7880*
4' - 2"	2' - 10"	2' - 6"	PRECAST	(2) D4.5 WIRE	(2) # 3	7400*	7400*	7400*	7400*
4' - 4"	3' - 0"	2' - 8"	PRECAST	(2) D4.5 WIRE	(2) # 3	7000*	7000*	7000*	7000*
4' - 8"	3' - 4"	3' - 0"	PRECAST	(2) D4.5 WIRE	(2) # 3	6073*	6250*	6250*	6250*
5' - 8"	4' - 4"	4' - 0"	PRECAST	(2) D4.5 WIRE	(2) # 3	3716	10000	4790	10000
6' - 8"	5' - 4"	5' - 0"	PRECAST	(2) D4.5 WIRE	(2) # 4	4576	10000	3209	9892
7' - 8"	6' - 4"	6' - 0"	PRECAST	(2) D4.5 WIRE	(2) # 4	3272	7319	2285	6226
9' - 8"	8' - 4"	8' - 0"	PRECAST	(2) D4.5 WIRE	(2) # 4	1886	3974	1301	3575

* LINTEL MEETS DEEP BEAM CRITERIA

NOTE #1: (1) #4 MIN. REQUIRED FOR DEEP BEAM ONLY



NOTE #1



Samuel A. Greenberg, State of Florida, Professional Engineer,
License No. 34245
This item has been X11 [U] signed and sealed by
Samuel A. Greenberg, PE on 10/20/2023 using a Digital
Signature.
Printed copies of this document are not considered signed
and sealed and h Y G < 5 U i h Y b h W h j c b W c X Y must be
j erified on any electronic copies.



10/10/2023 7:31:48 PM, ANSI full bleed A (8.50 x 11.00 Inches)

8" RECESS DOOR HEADER LOAD TABLE

QUALITY PRECAST COMPANY

P.O. Box 11
Brandon, FL 33509
www.qualityprecast.com
(813) 685-5615

DE DANSCO
ENGINEERING, P.A.
6423 RUBIA CIRCLE
APOLLO BEACH - FLORIDA - 33512
PHONE - (813) 911 1524 641615@AOL.COM

SAMUEL A. GREENBERG, P.E. #34245

SHT. NO.

SK16 of 23

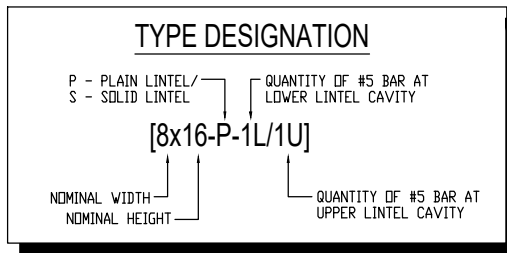
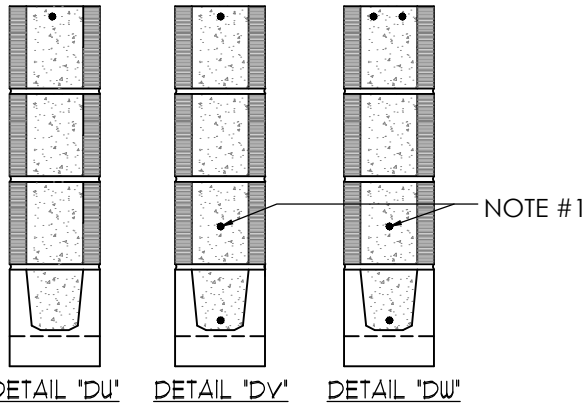
© 2023- THESE DRAWINGS AND DESIGNS ARE THE
JOINT PROPERTY OF DANSCO ENGINEERING, P.A. AND
THE CLIENT ON THIS PROJECT. ANY REPRODUCTION OR
UNAUTHORIZED USE IS PROHIBITED.

**GRAVITY & UPLIFT SAFE LOADS (PLF)
8" x 32" RECESS DOOR HEADER**

TOTAL LENGTH	CLEAR SPAN	DOOR SIZE	LINTEL TYPE	LINTEL STEEL TOP WIRE/ BAR	LINTEL STEEL BOTTOM BAR	GRAVITY SAFE LOAD		UPLIFT SAFE LOAD	
						SOLID #5(1)U(0)L	SOLID #5(1)U(1)L	SOLID #5(1)U(0)L #5(1)U(1)L	SOLID #5(2)U(1)L
						DETAIL DU	DETAIL DV	DETAIL DU & DV	DETAIL DW
3' - 8"	2' - 4"	2' - 0"	PRECAST	(2) D4.5 WIRE	(2) # 3	10000*	10000*	10000*	10000*
4' - 0"	2' - 8"	2' - 4"	PRECAST	(2) D4.5 WIRE	(2) # 3	9000*	9000*	9000*	9000*
4' - 2"	2' - 10"	2' - 6"	PRECAST	(2) D4.5 WIRE	(2) # 3	8450*	8450*	8450*	8450*
4' - 4"	3' - 0"	2' - 8"	PRECAST	(2) D4.5 WIRE	(2) # 3	8000*	8000*	8000*	8000*
4' - 8"	3' - 4"	3' - 0"	PRECAST	(2) D4.5 WIRE	(2) # 3	7102*	7250*	7250*	7250*
5' - 8"	4' - 4"	4' - 0"	PRECAST	(2) D4.5 WIRE	(2) # 3	4336*	5500*	5500*	5500*
6' - 8"	5' - 4"	5' - 0"	PRECAST	(2) D4.5 WIRE	(2) # 4	5356	10000	3811	10000
7' - 8"	6' - 4"	6' - 0"	PRECAST	(2) D4.5 WIRE	(2) # 4	3832	10000	2715	9482
9' - 8"	8' - 4"	8' - 0"	PRECAST	(2) D4.5 WIRE	(2) # 4	2211	5327	1550	4778

* LINTEL MEETS DEEP BEAM CRITERIA

NOTE #1: (1) #4 MIN. REQUIRED FOR DEEP BEAM ONLY



Samuel A. Greenberg, State of Florida, Professional Engineer,
License No. 34245
This item has been XIP signed and sealed by
Samuel A. Greenberg, PE on 10/20/2023 using a Digital
Signature.
Printed copies of this document are not considered signed
and sealed and ANY E-MAIL ANYTHING WE XY must be
verified on any electronic copies.



10/10/2023 7:31:49 PM, ANSI full bleed A (8.50 x 11.00 Inches)

DE DANSCO
ENGINEERING, P.A.
6423 RUBIA CIRCLE
APOLLO BEACH - FLORIDA - 33512
PHONE - (813) 911 1524 641615@DEAOL.COM

8" RECESS DOOR HEADER LOAD TABLE

QUALITY PRECAST COMPANY

P.O. Box 11
Brandon, FL 33509
www.qualityprecast.com
(813) 685-5615

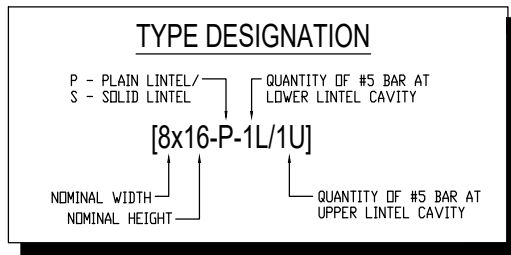
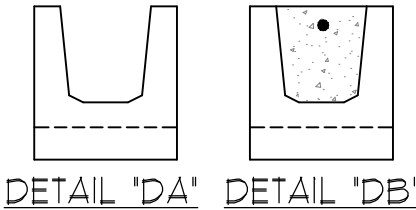
SAMUEL A. GREENBERG, P.E. #34245

SHT. NO.
SK17 of 23

© 2023- THESE DRAWINGS AND DESIGNS ARE THE
JOINT PROPERTY OF DANSCO ENGINEERING, P.A. AND
THE CLIENT ON THIS PROJECT. ANY REPRODUCTION OR
UNAUTHORIZED USE IS PROHIBITED.

LATERAL SAFE LOADS (PLF)
8" x 8" RECESS DOOR HEADER

TOTAL LENGTH	CLEAR SPAN	DOOR SIZE	LINTEL TYPE	LINTEL STEEL TOP WIRE/ BAR	LINTEL STEEL BOTTOM BAR	LATERAL SAFE LOAD	
						PLAIN	SOLID
						DETAIL DA	DETAIL DB
3' - 8"	2' - 4"	2' - 0"	PRECAST	(2) D4.5 WIRE	(2) # 3	1502	1885
4' - 0"	2' - 8"	2' - 4"	PRECAST	(2) D4.5 WIRE	(2) # 3	1270	1485
4' - 2"	2' - 10"	2' - 6"	PRECAST	(2) D4.5 WIRE	(2) # 3	1178	1326
4' - 4"	3' - 0"	2' - 8"	PRECAST	(2) D4.5 WIRE	(2) # 3	1100	1197
4' - 8"	3' - 4"	3' - 0"	PRECAST	(2) D4.5 WIRE	(2) # 3	970	979
5' - 8"	4' - 4"	4' - 0"	PRECAST	(2) D4.5 WIRE	(2) # 3	600	589
6' - 8"	5' - 4"	5' - 0"	PRECAST	(2) D4.5 WIRE	(2) # 4	555	1048
7' - 8"	6' - 4"	6' - 0"	PRECAST	(2) D4.5 WIRE	(2) # 4	460	856
9' - 8"	8' - 4"	8' - 0"	PRECAST	(2) D4.5 WIRE	(2) # 4	291	527



Samuel A. Greenberg, State of Florida, Professional Engineer,
License No. 34245
This item has been X11 "mu" signed and sealed by
Samuel A. Greenberg, PE on 10/20/2023 using a Digital
signature.
Printed copies of this document are not considered signed
and sealed and h Y G<5 UI h Yb h W h c b Wc X Y must be
j erified on any electronic copies.

10/10/2023 7:31:50 PM, ANSI full bleed A (8.50 x 11.00 Inches)

DE DANSCO
ENGINEERING, P.A.
6423 RUBIA CIRCLE
APOLLO BEACH - FLORIDA - 33512
PHONE - (813) 911 1524 641615@PE@AOL.COM

8" RECESS DOOR HEADER LOAD TABLE

QUALITY PRECAST COMPANY

P.O. Box 11
Brandon, FL 33509
www.qualityprecast.com
(813) 685-5615

© 2023- THESE DRAWINGS AND DESIGNS ARE THE
JOINT PROPERTY OF DANSCO ENGINEERING, P.A. AND
THE CLIENT ON THIS PROJECT. ANY REPRODUCTION OR
UNAUTHORIZED USE IS PROHIBITED.

SAMUEL A. GREENBERG, P.E. #34245

SHT. NO.

SK18 of 23

GENERAL NOTES:

1.) CODES

- 1.1 FLORIDA BUILDING CODE 7th EDITION, 2020 RESIDENTIAL SECTIONS R402.2 & R606.
- 1.2 FLORIDA BUILDING CODE, 7th EDITION, 2020 BUILDING SECTIONS 1901.2 & 2101.
- 1.3 BUILDING CODE REQUIREMENTS FOR REINFORCED CONCRETE (ACI 318-14).
- 1.4 BUILDING CODE REQUIREMENTS FOR MASONRY STRUCTURES (TMS 402-16).
- 1.5 SPECIFICATIONS REQUIREMENTS FOR MASONRY STRUCTURES (TMS 602-16).
- 1.6 AMERICAN SOCIETY OF CIVIL ENGINEERS MINIMUM DESIGN LOADS FOR BUILDINGS AND OTHER STRUCTURES (ASCE 7-16).

2.) CONCRETE:

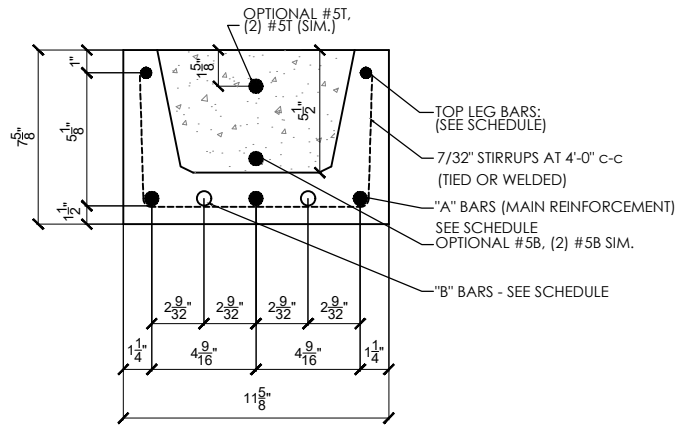
- 2.1 CONCRETE COMPRESSIVE STRENGTH AT 28 DAYS:
 - 2.1.1 PRE-CAST WITH STANDARD REINFORCEMENT - 5,000PSI
 - 2.1.2 GROUT PER ASTM C416 f'c=3,000PSI WITH MAXIMUM 3/8" AGGREGATE AND 8' TO 11' SLUMP.
- 2.2 REINFORCING BARS:
 - 2.2.1 STEEL PLACED IN PRE-CAST LINTEL AT TIME OF FABRICATION ASTM A615 (GRADE 60).
 - 2.2.2 STEEL IN LINTEL AND KNOCKOUT BLOCK (PLACED IN FIELD) ASTM A615 (GRADE 40).
- 2.3 DETAIL REINFORCEMENT IN ACCORDANCE WITH ACI 315.
- 2.4 CONCRETING OPERATIONS SHALL COMPLY WITH ACI STANDARDS.
- 2.5 D45 WIRE PER ASTM A1064.

3.) MASONRY:

- 3.1 CONCRETE MASONRY UNITS (CMU) SHALL CONFORM TO ASTM C-90, NORMAL WEIGHT WITH MINIMUM NET AREA COMPRESSIVE STRENGTH 2,000PSI.
- 3.2 MORTAR SHALL CONFORM TO ASTM C-270 TYPE 'M' OR 'S'.
- 3.3 FULL MORTAR JOINTS ARE REQUIRED.
- 3.4 MINIMUM AGGREGATE 28-DAY COMPRESSIVE STRENGTH OF CMU AND MORTAR SHALL NOT BE LESS THAN f'm = 2,000 PSI. MASONRY STRENGTH SHALL BE ESTABLISHED BY THE 'UNIT STRENGTH METHOD' OR, ALTERNATIVELY BY THE 'PRISM TEST METHOD' WHERE UNIT STRENGTH METHOD REQUIREMENTS HAVE NOT BEEN MET.

4.) STRUCTURAL:

- 4.1 SAFE LOAD VALUES ARE BASED ON LINTELS HAVING A BEARING OF 8" (WITH A MINIMUM ACCEPTABLE BEARING OF 4" FOR FILLED LINTELS AND 6 1/2" FOR UNFILLED LINTELS IN DIRECTION OF SPAN PER TMS 402-16 SECTION 4.3.4).
- 4.2 SAFE LOAD VALUES ARE BASED ON RATIONAL DESIGN ANALYSIS PER ACI 318 AND TMS 402.
- 4.3 DESIGNER MAY EVALUATE CONCENTRATED LOADS FROM THE SAFE LOAD TABLES BY CALCULATING MAXIMUM RESISTING MOMENT AND SHEAR AT d DISTANCE AWAY FROM THE FACE OF THE SUPPORT.
- 4.4 LINTELS THAT ARE GREATER THAN 14'-0" CLEAR SPAN MUST BE PROVIDED TEMPORARY SUPPORT AND NOT BE REMOVED UNTIL TWO (2) DAYS AFTER GROUT PLACEMENT.
- 4.5 FOR LINTEL LENGTH AT 6'-6" OR GREATER, VERTICAL CELL FILLED SOLID WITH GROUT AND MINIMUM ONE (1) #5 VERTICAL REBAR IS REQUIRED AT EACH END OF THE LINTEL.
- 4.6 FOR COMPOSITE LINTEL HEIGHTS NOT SHOWN, USE SAFE LOAD FROM NEXT LOWER HEIGHT SHOWN.
- 4.7 ANY VARIATION OR ALTERATION OF THE INTENDED DESIGN USE OF THE LINTELS IS PROHIBITED WITHOUT PRIOR APPROVAL OF A STRUCTURAL ENGINEER.



**TYPICAL 12-INCH LINTEL
PRECAST CONCRETE**

Samuel A. Greenberg, State of Florida, Professional Engineer, License No. 34245

This item has been X[[] signed and sealed by Samuel A. Greenberg, PE on 10/20/2023 using a Digital Signature.

Printed copies of this document are not considered Signed and sealed and h Y 'G< 5 'Ui h Y b h WU h c b ' Wc XY ' must be j erified on any electronic copies.



10/10/2023 7:31:51 PM, ANSI full bleed A (8.50 x 11.00 inches)

DE DANSCO ENGINEERING, P.A.
6423 RUBIA CIRCLE
APOLLO BEACH - FLORIDA - 33512
PHONE - (813) 911 1524 FAX 813 915 1516 AOL.COM

GENERAL NOTES & DETAILS - 12" LINTEL

QUALITY PRECAST COMPANY

P.O. Box 11
Brandon, FL 33509
www.qualityprecast.com
(813) 685-5615

SAMUEL A. GREENBERG, P.E. #34245

SHT. NO.

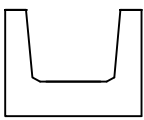
SK19 of 23

© 2023- THESE DRAWINGS AND DESIGNS ARE THE JOINT PROPERTY OF DANSCO ENGINEERING, P.A. AND THE CLIENT ON THIS PROJECT. ANY REPRODUCTION OR UNAUTHORIZED USE IS PROHIBITED.

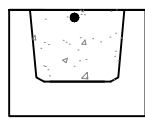
REINFORCING SCHEDULE & LOAD CAPACITIES SAFE WORKING LOADS (PLF) 12" x 8" LINTELS

LINTEL TOTAL LENGTH	CLEAR SPAN	LINTEL TYPE	BOTTOM REINFORCEMENT		TOP REINF.	GRAVITY SAFE LOAD			UPLIFT SAFE LOAD	
			A	B		PLAIN DETAIL A	(1)U & (0)L DETAIL B	(1)U & (1)L DETAIL C	(1)U & (0)L (1)U & (1)L DETAIL B&C	(2)U & (1)L DETAIL D
			BARS	BARS						
2'-10"	1'-6"	PRECAST	(3) #3	None	(2) D4.5 WIRE	9465	10000	10000	9947	10000
3'-6"	2'-2"	PRECAST	(3) #3	None	(2) D4.5 WIRE	4087	6826	6826	5792	7785
4'-0"	2'-8"	PRECAST	(3) #3	None	(2) D4.5 WIRE	2860	4878	4878	4169	5475
4'-6"	3'-2"	PRECAST	(3) #3	None	(2) D4.5 WIRE	2196	3789	3789	3138	4216
5'-4"	4'-0"	PRECAST	(3) #3	None	(2) D4.5 WIRE	1580	2755	2755	2098	3041
5'-10"	4'-6"	PRECAST	(3) #3	None	(2) D4.5 WIRE	1351	2364	2364	1701	2602
6'-4"	5'-0"	PRECAST	(3) #3	None	(2) D4.5 WIRE	1179	2069	2069	1404	2272
6'-8"	5'-4"	PRECAST	(3) #3	None	(2) D4.5 WIRE	1086	1909	1909	1246	2094
7'-6"	6'-2"	PRECAST	(3) #5	None	(2) D4.5 WIRE	883	1658	1658	947	1749
8'-4"	7'-0"	PRECAST	(3) #5	None	(2) D4.5 WIRE	757	1422	1422	741	1500
9'-4"	8'-0"	PRECAST	(3) #5	None	(2) D4.5 WIRE	645	1213	1213	567	1161
10'-6"	9'-2"	PRECAST	(3) #5	None	(2) D4.5 WIRE	549	1032	1032	427	889
11'-4"	10'-0"	PRECAST	(3) #5	(2) #3	(2) #3	496	940	940	354	746
12'-6"	11'-2"	PRECAST	(3) #5	(2) #3	(2) #3	436	826	826	276	595
13'-4"	12'-0"	PRECAST	(3) #5	(2) #3	(2) #3	400	759	759	234	512
14'-0"	12'-8"	PRECAST	(3) #5	(2) #3	(2) #3	376	713	713	206	457
14'-8"	13'-4"	PRECAST	(3) #5	(2) #3	(2) #3	354	672	672	181	409
15'-4"	14'-0"	PRECAST	(3) #5	(2) #3	(2) #3	334	634	634	160	367
17'-4"	16'-0"	PRECAST	(3) #5	(2) #3	(2) #3	280	421	455	110	271

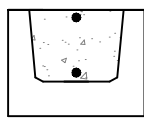
N.R.- NOT RECOMMENDED



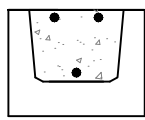
DETAIL "A"



DETAIL "B"



DETAIL "C"



DETAIL "D"

TYPE DESIGNATION

P - PLAIN LINTEL / S - SOLID LINTEL

QUANTITY OF #5 BAR AT LOWER LINTEL CAVITY

[12x16-P-#L / #U]

NOMINAL WIDTH
NOMINAL HEIGHT

QUANTITY OF #5 BAR AT UPPER LINTEL CAVITY

Samuel A. Greenberg, State of Florida, Professional Engineer,
License No. 34245

This item has been X[] signed and sealed by

Samuel A. Greenberg, PE on **10/20/2023** using a Digital Signature.

Printed copies of this document are not considered Signed and sealed and the original must be verified on any electronic copies.



12" LINTEL LOAD TABLE

QUALITY PRECAST COMPANY

P.O. Box 11
Brandon, FL 33509
www.qualityprecast.com
(813) 685-5615

DE DANSCO
ENGINEERING, P.A.
6423 RUBIA CIRCLE
APOLLO BEACH - FLORIDA - 33512
PHONE - (813) 917-1824 FAX - (813) 917-1824

SAMUEL A. GREENBERG, P.E. #34245

SHT. NO.

SK20 of 23

© 2023- THESE DRAWINGS AND DESIGNS ARE THE JOINT PROPERTY OF DANSCO ENGINEERING, P.A. AND THE CLIENT ON THIS PROJECT. ANY REPRODUCTION OR UNAUTHORIZED USE IS PROHIBITED.

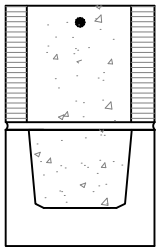
10/10/2023 7:31:52 PM, ANSI full bleed A (8.50 x 11.00 inches)

REINFORCING SCHEDULE & LOAD CAPACITIES SAFE WORKING LOADS (PLF) 12" x 16" LINTELS

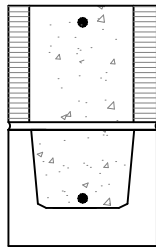
LINTEL TOTAL LENGTH	CLEAR SPAN	LINTEL TYPE	BOTTOM REINFORCEMENT		TOP REINF.	GRAVITY SAFE LOAD		UPLIFT SAFE LOAD	
			A	B		(1)U & (0)L DETAIL E	(1)U & (1)L DETAIL F	(1)U & (0)L (1)U & (1)L DETAIL E&F	(2)U & (1)L DETAIL G
			BARS	BARS					
2'-10"	1'-6"	PRECAST	(3) #3	None	(2) D4.5 WIRE	10000*	10000*	10000*	10000*
3'-6"	2'-2"	PRECAST	(3) #3	None	(2) D4.5 WIRE	10000*	10000*	10000*	10000*
4'-0"	2'-8"	PRECAST	(3) #3	None	(2) D4.5 WIRE	10000	10000	10000	10000
4'-6"	3'-2"	PRECAST	(3) #3	None	(2) D4.5 WIRE	10000	10000	7590	10000
5'-4"	4'-0"	PRECAST	(3) #3	None	(2) D4.5 WIRE	8321	10000	5087	10000
5'-10"	4'-6"	PRECAST	(3) #3	None	(2) D4.5 WIRE	6769	8252	4130	8256
6'-4"	5'-0"	PRECAST	(3) #3	None	(2) D4.5 WIRE	5610	6742	3416	6854
6'-8"	5'-4"	PRECAST	(3) #3	None	(2) D4.5 WIRE	4992	6006	3036	6102
7'-6"	6'-2"	PRECAST	(3) #5	None	(2) D4.5 WIRE	4806	4806	2317	4680
8'-4"	7'-0"	PRECAST	(3) #5	None	(2) D4.5 WIRE	3942	3942	1819	3697
9'-4"	8'-0"	PRECAST	(3) #5	None	(2) D4.5 WIRE	3237	3237	1400	2870
10'-6"	9'-2"	PRECAST	(3) #5	None	(2) D4.5 WIRE	2673	2673	1064	2205
11'-4"	10'-0"	PRECAST	(3) #5	(2) #3	(2) #3	2382	2382	888	1859
12'-6"	11'-2"	PRECAST	(3) #5	(2) #3	(2) #3	2056	2056	702	1491
13'-4"	12'-0"	PRECAST	(3) #5	(2) #3	(2) #3	1871	1871	600	1288
14'-0"	12'-8"	PRECAST	(3) #5	(2) #3	(2) #3	1745	1745	531	1152
14'-8"	13'-4"	PRECAST	(3) #5	(2) #3	(2) #3	1633	1633	472	1035
15'-4"	14'-0"	PRECAST	(3) #5	(2) #3	(2) #3	1534	1534	420	934
17'-4"	16'-0"	PRECAST	(3) #5	(2) #3	(2) #3	1296	1296	302	700

N.R. - NOT RECOMMENDED

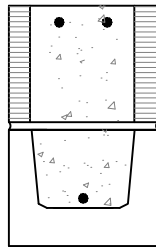
* LINTEL MEETS DEEP BEAM CRITERIA



DETAIL 'E'



DETAIL 'F'



DETAIL 'G'

TYPE DESIGNATION

P - PLAIN LINTEL /
S - SOLID LINTEL

QUANTITY OF #5 BAR AT
LOWER LINTEL CAVITY

[12x16-P-#L / #U]

NOMINAL WIDTH
NOMINAL HEIGHT

QUANTITY OF #5 BAR AT
UPPER LINTEL CAVITY

10/10/2023 7:31:52 PM, ANSI full bleed A (8.50 x 11.00 Inches)

Samuel A. Greenberg, State of Florida, Professional Engineer,
License No. 34245

This item has been X[[] signed and sealed by

Samuel A. Greenberg, PE on **10/20/2023** using a Digital
Signature.

Printed copies of this document are not considered Signed
and sealed and h\Y 'G< 5 'Ui h\Y bh]WU]c b 'Wc XY' must be
j erified on any electronic copies.



12" LINTEL LOAD TABLE

QUALITY PRECAST COMPANY

P.O. Box 11
Brandon, FL 33509
www.qualityprecast.com
(813) 685-5615

DE DANSCO
ENGINEERING, P.A.
6423 RUBIA CIRCLE
APOLLO BEACH - FLORIDA - 33512
PHONE - (813) 917 1824 8AM@DEE@AOL.COM

© 2023- THESE DRAWINGS AND DESIGNS ARE THE
JOINT PROPERTY OF DANSCO ENGINEERING, P.A. AND
THE CLIENT ON THIS PROJECT. ANY REPRODUCTION OR
UNAUTHORIZED USE IS PROHIBITED.

SAMUEL A. GREENBERG, P.E. #34245

SHT. NO.

SK21 of 23

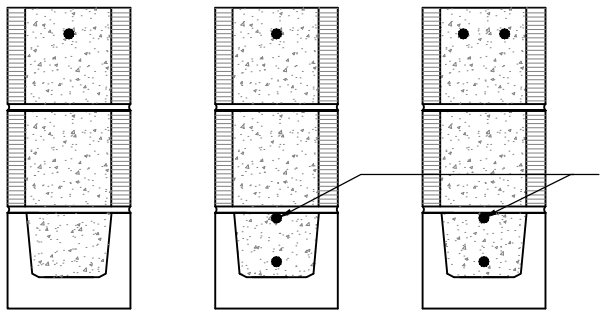
REINFORCING SCHEDULE & LOAD CAPACITIES SAFE WORKING LOADS (PLF) 12" x 24" LINTELS

LINTEL TOTAL LENGTH	CLEAR SPAN	LINTEL TYPE	BOTTOM REINFORCEMENT		TOP REINF.	GRAVITY SAFE LOAD		UPLIFT SAFE LOAD	
			A BARS	B BARS		(1)U & (0)L	(1)U & (1)L	(1)U & (0)L	(2)U & (1)L
						DETAIL H	DETAIL J	(1)U & (1)L DETAIL H&J	DETAIL K
2'-10"	1'-6"	PRECAST	(3) #3	None	(2) D4.5 WIRE	10000*	10000*	10000*	10000*
3'-6"	2'-2"	PRECAST	(3) #3	None	(2) D4.5 WIRE	10000*	10000*	10000*	10000*
4'-0"	2'-8"	PRECAST	(3) #3	None	(2) D4.5 WIRE	10000*	10000*	10000*	10000*
4'-6"	3'-2"	PRECAST	(3) #3	None	(2) D4.5 WIRE	9730*	9730*	9730*	9730*
5'-4"	4'-0"	PRECAST	(3) #3	None	(2) D4.5 WIRE	10000	10000	8084	10000
5'-10"	4'-6"	PRECAST	(3) #3	None	(2) D4.5 WIRE	10000	10000	6569	10000
6'-4"	5'-0"	PRECAST	(3) #3	None	(2) D4.5 WIRE	8902	10000	5437	10000
6'-8"	5'-4"	PRECAST	(3) #3	None	(2) D4.5 WIRE	7925	10000	4834	9729
7'-6"	6'-2"	PRECAST	(3) #5	None	(2) D4.5 WIRE	10000	10000	3694	7468
8'-4"	7'-0"	PRECAST	(3) #5	None	(2) D4.5 WIRE	7974	7974	2905	5903
9'-4"	8'-0"	PRECAST	(3) #5	None	(2) D4.5 WIRE	6131	6131	2242	4588
10'-6"	9'-2"	PRECAST	(3) #5	None	(2) D4.5 WIRE	4817	4817	1709	3532
11'-4"	10'-0"	PRECAST	(3) #5	(2) #3	(2) #3	4184	4184	1431	2980
12'-6"	11'-2"	PRECAST	(3) #5	(2) #3	(2) #3	3516	3516	1136	2394
13'-4"	12'-0"	PRECAST	(3) #5	(2) #3	(2) #3	3153	3153	973	2071
14'-0"	12'-8"	PRECAST	(3) #5	(2) #3	(2) #3	2911	2911	864	1855
14'-8"	13'-4"	PRECAST	(3) #5	(2) #3	(2) #3	2701	2701	770	1670
15'-4"	14'-0"	PRECAST	(3) #5	(2) #3	(2) #3	2519	2519	689	1508
17'-4"	16'-0"	PRECAST	(3) #5	(2) #3	(2) #3	2090	2090	501	1136

N.R. - NOT RECOMMENDED

* LINTEL MEETS DEEP BEAM CRITERIA

NOTE #1: (1) #4 MIN. REQUIRED FOR DEEP BEAM ONLY



DETAIL "H" DETAIL "J" DETAIL "K"

TYPE DESIGNATION

P - PLAIN LINTEL / QUANTITY OF #5 BAR AT LOWER LINTEL CAVITY
 S - SOLID LINTEL

[12x16-P-#L / #U]

NOMINAL WIDTH QUANTITY OF #5 BAR AT UPPER LINTEL CAVITY
 NOMINAL HEIGHT

Samuel A. Greenberg, State of Florida, Professional Engineer,
License No. 34245
This item has been X[] signed and sealed by
Samuel A. Greenberg, PE on 10/20/2023 using a Digital
Signature.
Printed copies of this document are not considered Signed
and sealed and they must be verified on any electronic copies.



12" LINTEL LOAD TABLE

QUALITY PRECAST COMPANY

P.O. Box 11
Brandon, FL 33509
www.qualityprecast.com
(813) 685-5615

SAMUEL A. GREENBERG, P.E. #34245

SHT. NO.
SK22 of 23

10/10/2023 7:31:53 PM, ANSI full bleed A (8.50 x 11.00 inches)

DE DANSCO
ENGINEERING, P.A.
6423 RUBIA CIRCLE
APOLLO BEACH - FLORIDA - 33512
PHONE - (813) 917 1824 8AM@DEDA.COM

© 2023- THESE DRAWINGS AND DESIGNS ARE THE
JOINT PROPERTY OF DANSCO ENGINEERING, P.A. AND
THE CLIENT ON THIS PROJECT. ANY REPRODUCTION OR
UNAUTHORIZED USE IS PROHIBITED.

REINFORCING SCHEDULE & LOAD CAPACITIES SAFE WORKING LOADS (PLF) 12" x 32" LINTELS

LINTEL TOTAL LENGTH	CLEAR SPAN	LINTEL TYPE	BOTTOM REINFORCEMENT		TOP REINF.	GRAVITY SAFE LOAD		UPLIFT SAFE LOAD	
			A BARS	B BARS		(1)U & (0)L	(1)U & (1)L	(1)U & (0)L	(2)U & (1)L
						DETAIL L	DETAIL M	(1)U & (1)L DETAIL L&M	DETAIL N
2'-10"	1'-6"	PRECAST	(3) #3	None	(2) D4.5 WIRE	10000*	10000*	10000*	10000*
3'-6"	2'-2"	PRECAST	(3) #3	None	(2) D4.5 WIRE	10000*	10000*	10000*	10000*
4'-0"	2'-8"	PRECAST	(3) #3	None	(2) D4.5 WIRE	10000*	10000*	10000*	10000*
4'-6"	3'-2"	PRECAST	(3) #3	None	(2) D4.5 WIRE	10000*	10000*	10000*	10000*
5'-4"	4'-0"	PRECAST	(3) #3	None	(2) D4.5 WIRE	9715*	9715*	9715*	9715*
5'-10"	4'-6"	PRECAST	(3) #3	None	(2) D4.5 WIRE	8550*	8550*	8550*	8550*
6'-4"	5'-0"	PRECAST	(3) #3	None	(2) D4.5 WIRE	10000	10000	7459	10000
6'-8"	5'-4"	PRECAST	(3) #3	None	(2) D4.5 WIRE	10000	10000	6634	10000
7'-6"	6'-2"	PRECAST	(3) #5	None	(2) D4.5 WIRE	10000	10000	5072	10000
8'-4"	7'-0"	PRECAST	(3) #5	None	(2) D4.5 WIRE	10000	10000	3992	8114
9'-4"	8'-0"	PRECAST	(3) #5	None	(2) D4.5 WIRE	10000	10000	3084	6310
10'-6"	9'-2"	PRECAST	(3) #5	None	(2) D4.5 WIRE	8293	8293	2355	4861
11'-4"	10'-0"	PRECAST	(3) #5	(2) #3	(2) #3	6918	6918	1974	4103
12'-6"	11'-2"	PRECAST	(3) #5	(2) #3	(2) #3	5590	5590	1569	3300
13'-4"	12'-0"	PRECAST	(3) #5	(2) #3	(2) #3	4909	4909	1347	2857
14'-0"	12'-8"	PRECAST	(3) #5	(2) #3	(2) #3	4470	4470	1198	2560
14'-8"	13'-4"	PRECAST	(3) #5	(2) #3	(2) #3	4100	4100	1069	2305
15'-4"	14'-0"	PRECAST	(3) #5	(2) #3	(2) #3	3786	3786	958	2084
17'-4"	16'-0"	PRECAST	(3) #5	(2) #3	(2) #3	3069	3069	700	1573

N.R. - NOT RECOMMENDED

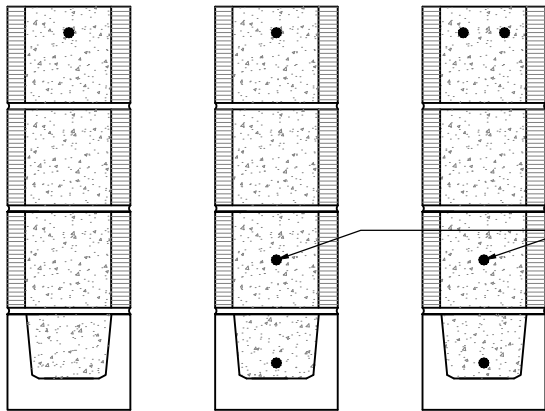
* LINTEL MEETS DEEP BEAM CRITERIA

NOTE #1: (1) #4 MIN. REQUIRED FOR DEEP BEAM ONLY

Samuel A. Greenberg, State of Florida, Professional Engineer, License No. 34245

This item has been X[] signed and sealed by Samuel A. Greenberg, PE on 10/20/2023 using a Digital Signature.

Printed copies of this document are not considered Signed and sealed and MUST be verified on any electronic copies.



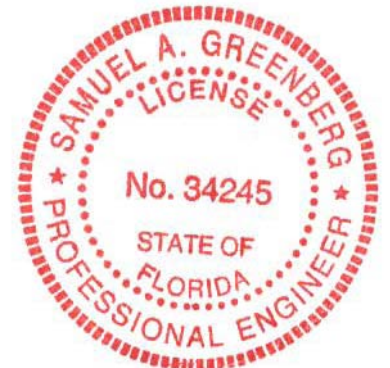
DETAIL "L" DETAIL "M" DETAIL "N"

TYPE DESIGNATION

P - PLAIN LINTEL / S - SOLID LINTEL QUANTITY OF #5 BAR AT LOWER LINTEL CAVITY

[12x16-P-#L / #U]

NOMINAL WIDTH QUANTITY OF #5 BAR AT UPPER LINTEL CAVITY



12" LINTEL LOAD TABLE

QUALITY PRECAST COMPANY

P.O. Box 11
Brandon, FL 33509
www.qualityprecast.com
(813) 685-5615

SAMUEL A. GREENBERG, P.E. #34245

SHT. NO.
SK23 of 23

DE DANSCO ENGINEERING, P.A.
6423 RUBIA CIRCLE
APOLLO BEACH - FLORIDA - 33512
PHONE - (813) 917 1824 8AM@DEE@aol.com

© 2023- THESE DRAWINGS AND DESIGNS ARE THE JOINT PROPERTY OF DANSCO ENGINEERING, P.A. AND THE CLIENT ON THIS PROJECT. ANY REPRODUCTION OR UNAUTHORIZED USE IS PROHIBITED.

10/10/2023 7:31:54 PM, ANSI full bleed A (8.50 x 11.00 inches)